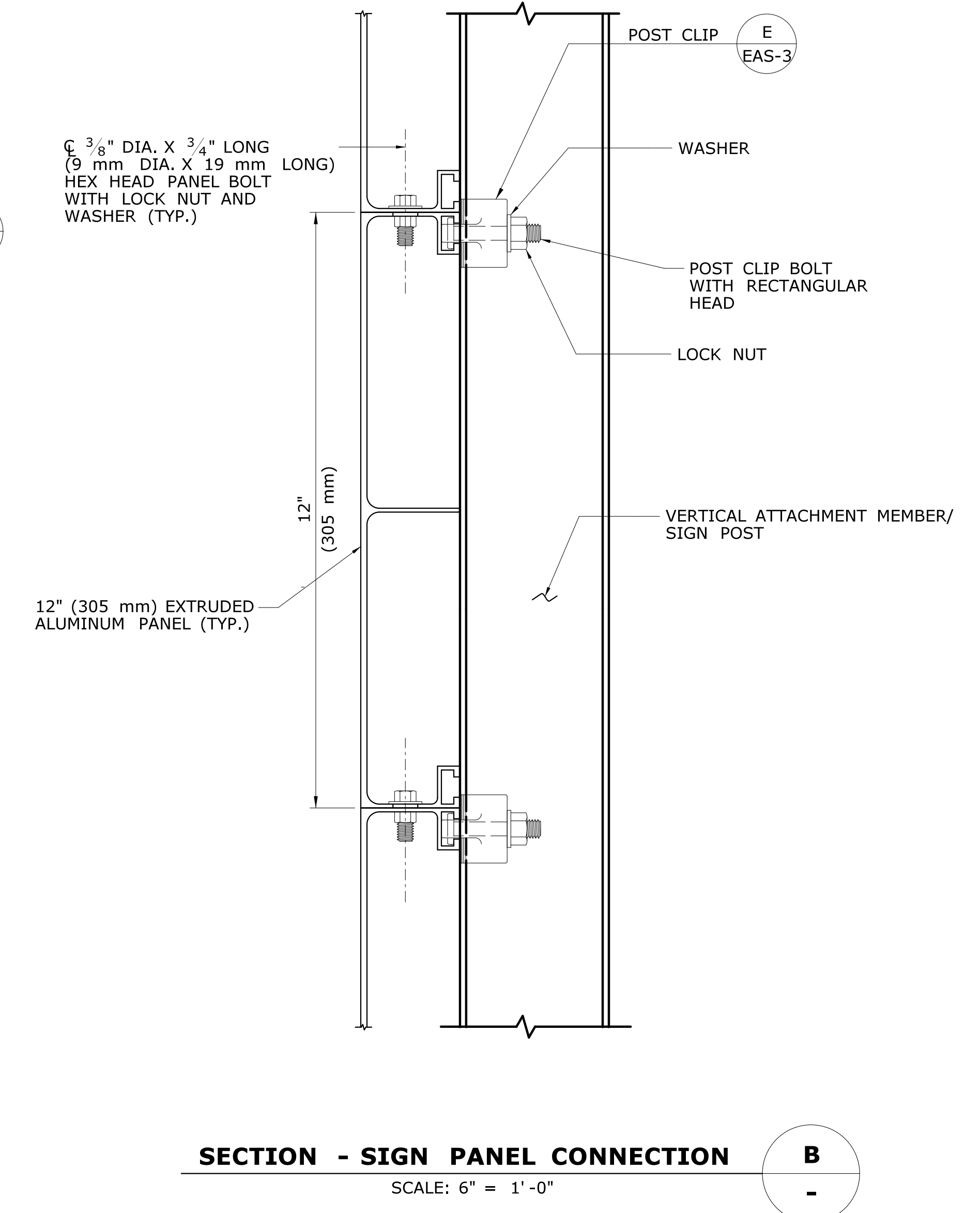
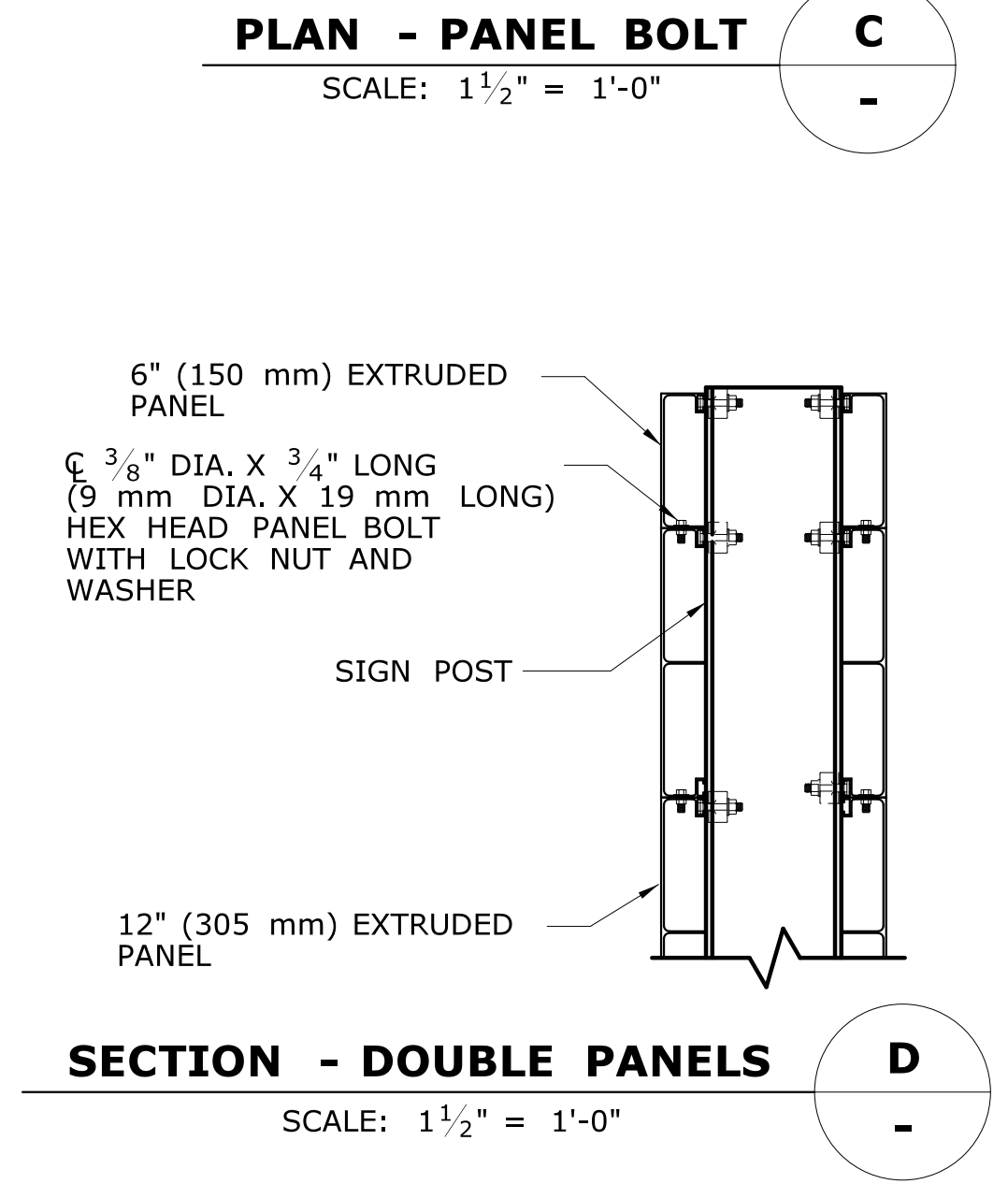
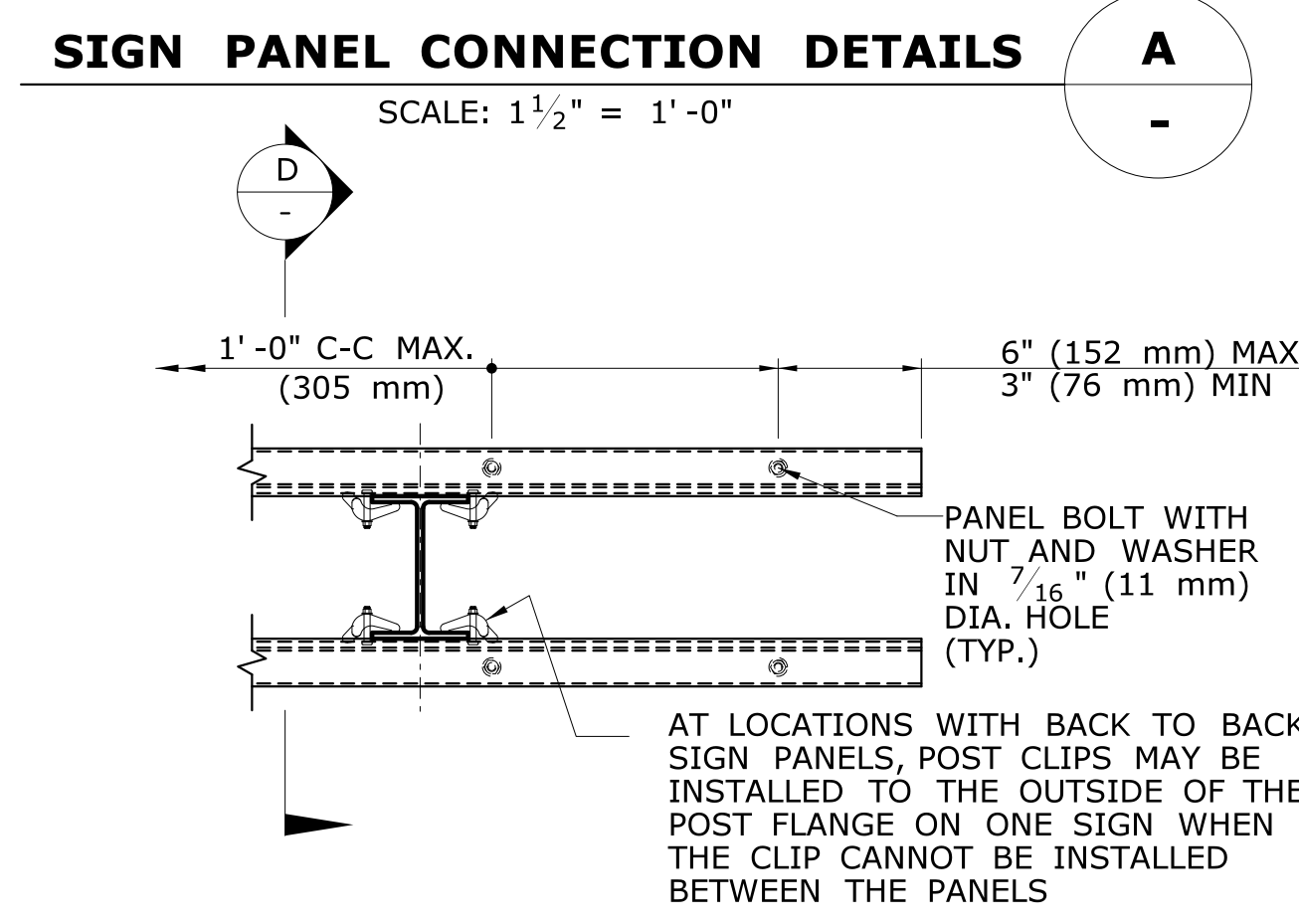
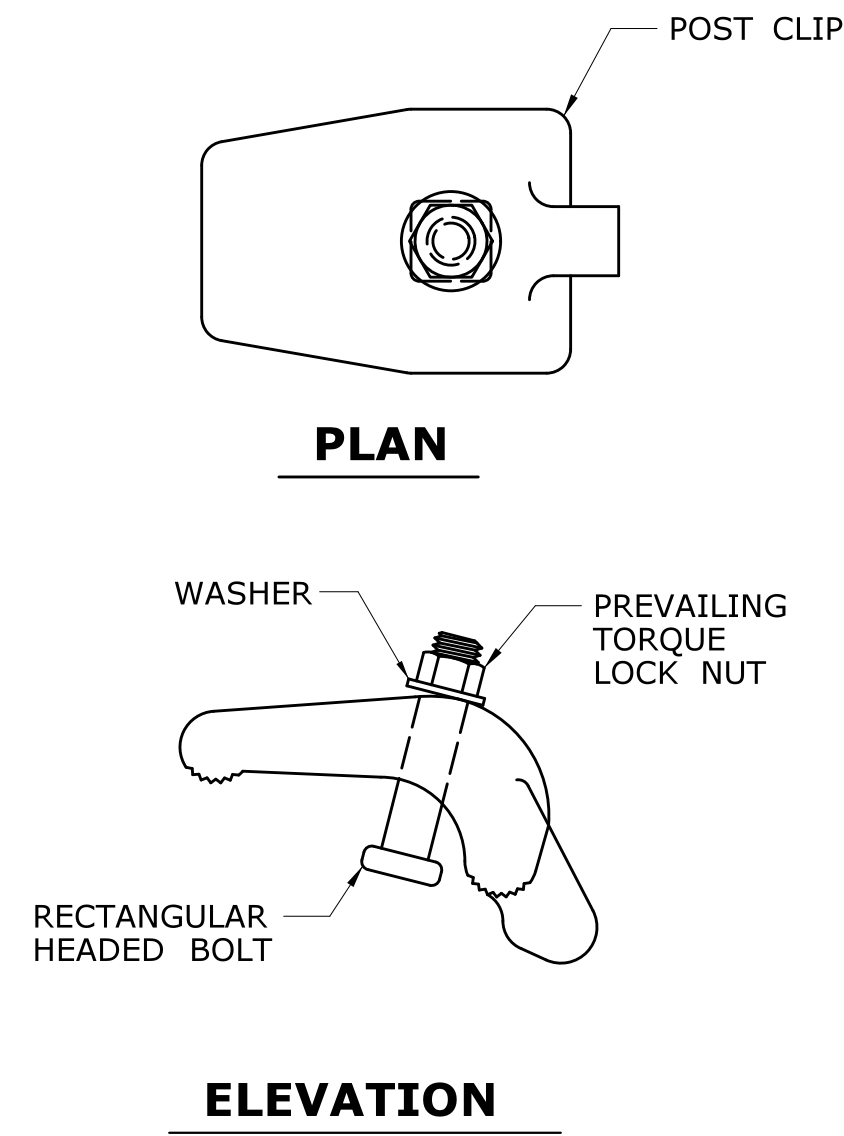


NOTE:
THE EXTRUDED ALUMINUM SIGN PANELS SHALL BE CONNECTED TOGETHER WITH PANEL BOLTS INSTALLED IN ACCORDANCE WITH THE SPACING CRITERIA SHOWN. IF THE PANEL BOLTS CANNOT BE INSTALLED DUE TO MISALIGNED HOLES, A NEW HOLE(S) SHALL BE INSTALLED IN THE FLANGE OF THE EXTRUDED PANEL. THE NEW HOLE(S) SHALL BE A MINIMUM OF 2" (50 mm) FROM ANY EXISTING PANEL BOLT HOLES.

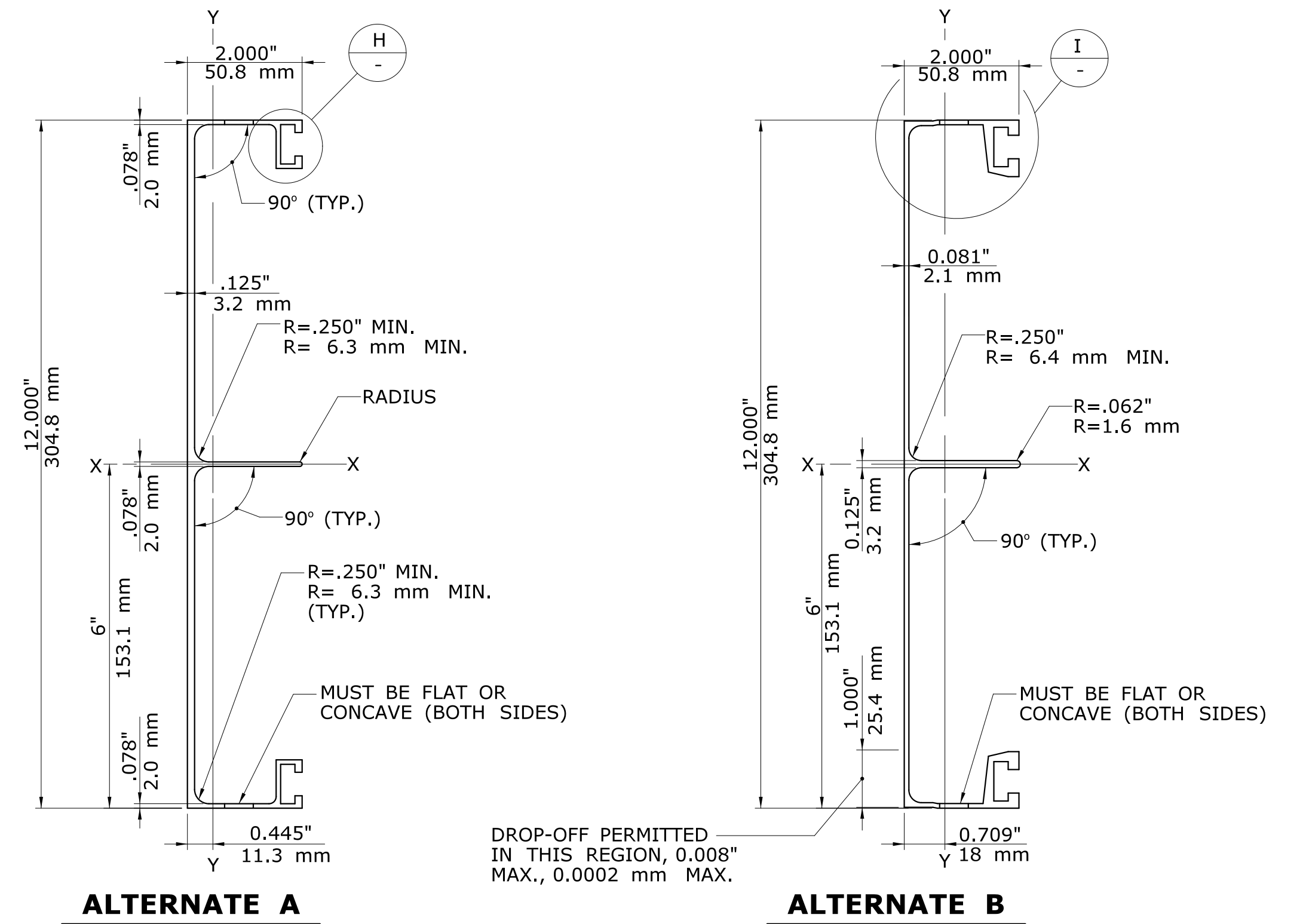
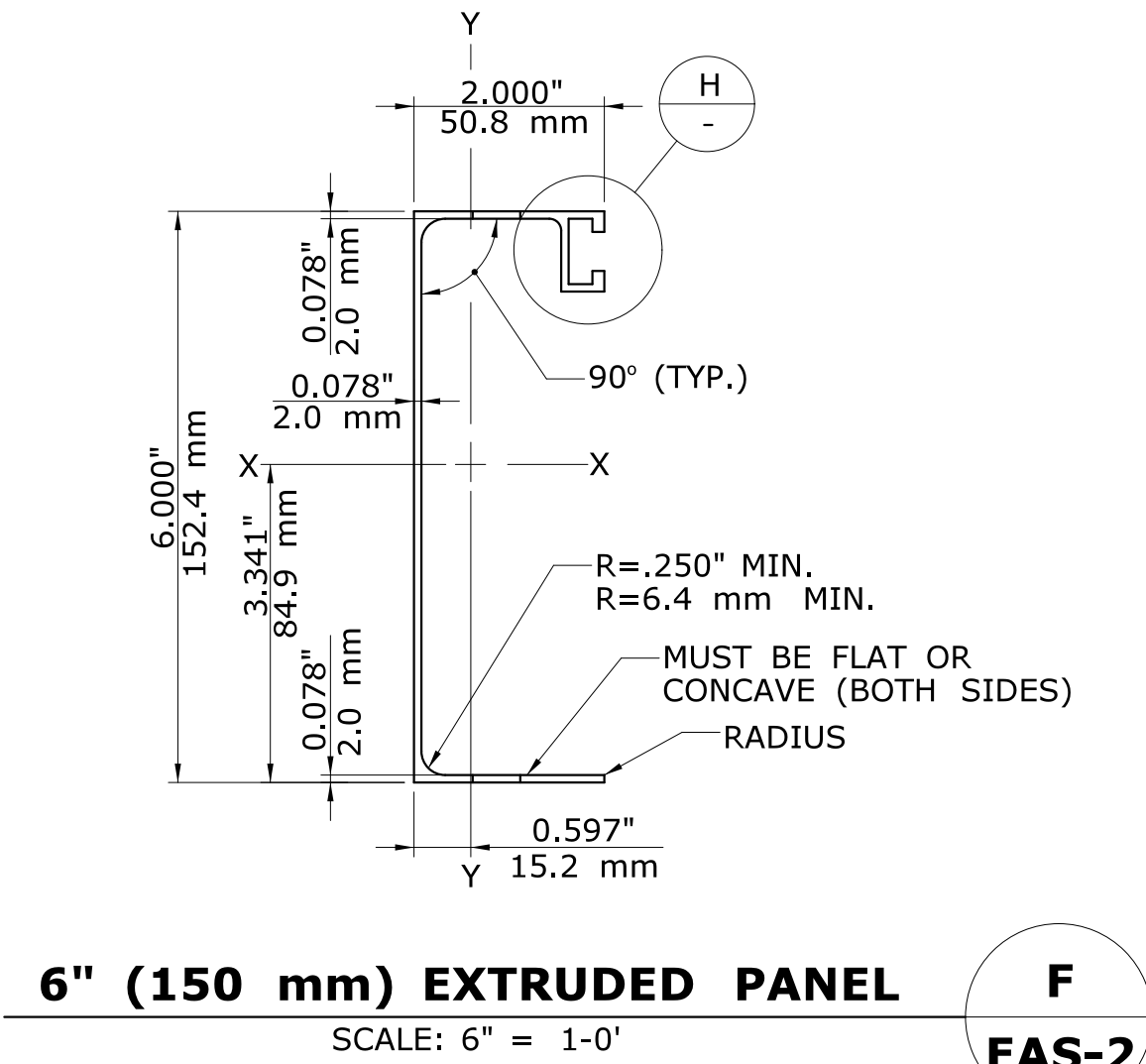


V.2021.02.05

REV. DATE	REVISION DESCRIPTION	SHEET NO.	Plotted Date: 6/9/2021	DESIGNER/DRAFTER: NRG	<p>STATE OF CONNECTICUT DEPARTMENT OF TRANSPORTATION</p>	SIGNATURE/ BLOCK: <i>Andrew J. Carabini</i>	PROJECT TITLE: INTERCHANGE 57 IMPROVEMENTS ON ROUTE 15 SOUTHBOUND	TOWN: ORANGE	PROJECT NO. 0106-0130
				CHECKED BY: CMP		SCALE AS NOTED	APPROVED BY: DATE:	DRAWING TITLE: EXTRUDED ALUMINUM SIGN PANEL CONNECTION DETAILS	DRAWING NO. EAS-2



POST CLIP DETAIL E
FULL SCALE
EAS-2



12" (305 mm) EXTRUDED PANEL G
SCALE: 6" = 1-0'
EAS-2

NOTES

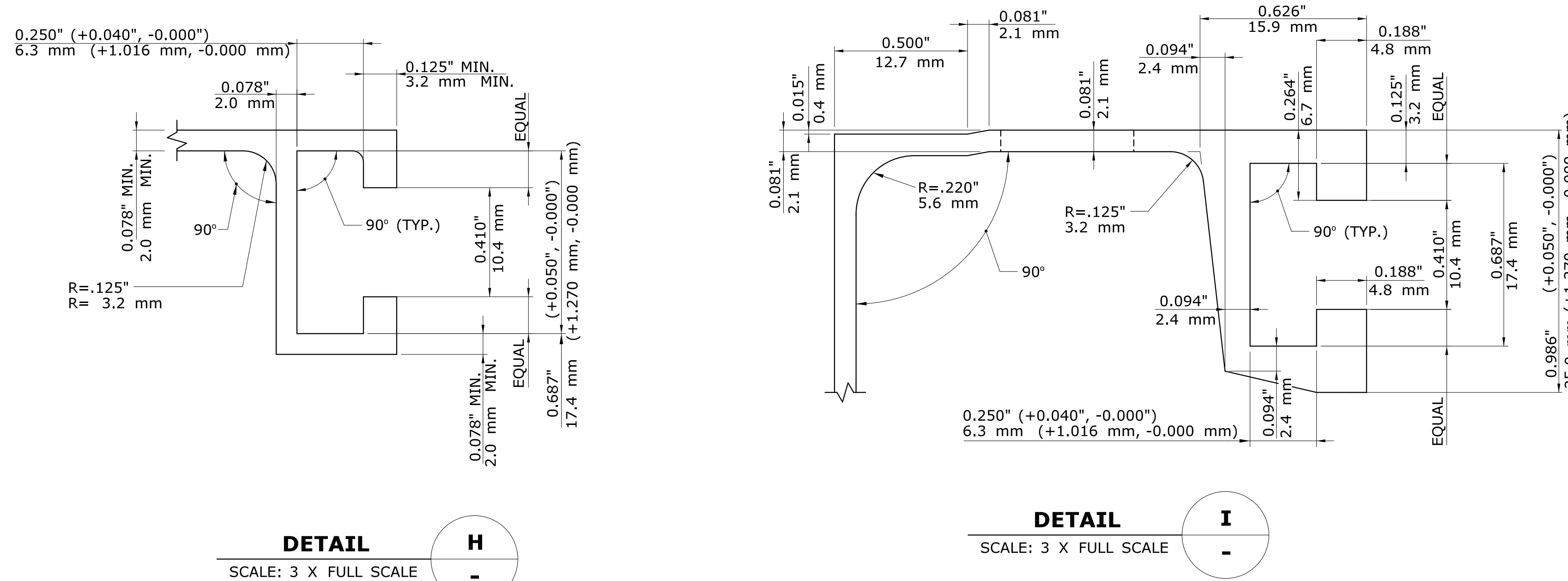
THE EXTRUDED PANELS SHALL CONFORM TO THE REQUIREMENTS ASTM B221, ALLOY 6063-T6 AND THE FOLLOWING SECTION PROPERTIES:

SECTION	AREA OF SECTION in ² (mm ²)	WT. / FT. LBS. / FT. (KG / M)	I _{x-x} in ⁴ (mm ⁴)	I _{y-y} in ⁴ (mm ⁴)
6" (150 mm) EXTRUDED PANEL	0.933 (601.93)	1.13 (0.16)	5.023 (2 090 730)	0.473 (196 877)
12" (305 mm) EXTRUDED PANEL ALTERNATE A	2.237 (1443.22)	2.72 (0.38)	36.284 (15 102 541)	0.941 (391 674)
12" (305 mm) EXTRUDED PANEL ALTERNATE B	2.091 (1349.03)	2.54 (0.35)	38.947 (16 210 965)	1.183 (492 402)

THE PANEL BOLTS SHALL CONFORM TO ASTM A193, CLASS 1, GRADE B8 (TYPE 304). THE NUTS SHALL BE A COMPATIBLE HEX, PREVAILING TORQUE (NYLON INSERT) LOCK NUTS CONFORMING TO ASTM A194, CLASS 1, GRADE B8 (TYPE 304). THE WASHERS SHALL BE A COMPATIBLE, FLAT, CIRCULAR WASHERS CONFORMING TO ASTM A276, TYPE 304, ANNEALED.

THE POST CLIP ASSEMBLY SHALL COMPOSED OF A POST CLIP AND A BOLT WITH A NUT AND WASHER. THE POST CLIP SHALL CONFORM TO THE REQUIREMENTS OF ASTM B26, ALLOY 356.0-T6. THE POST BOLT SHALL BE A 3/8" DIA. X 1 3/4" LONG (9 mm DIA. X 44 mm LONG) RECTANGULAR HEAD BOLT CONFORMING TO ASTM A193, CLASS 1, GRADE B8 (TYPE 304). THE NUT SHALL BE A COMPATIBLE HEX, PREVAILING TORQUE (NYLON INSERT) LOCK NUT CONFORMING TO ASTM A194, CLASS 1, GRADE B8 (TYPE 304). THE WASHER SHALL BE A COMPATIBLE, FLAT, CIRCULAR WASHER CONFORMING TO ASTM A276, TYPE 304, ANNEALED. THE DIMENSIONS OF THE RECTANGULAR BOLT HEAD SHALL BE SUCH THAT IT WILL FIT INTO THE EXTRUDED PANEL SLOT AND WILL NOT ROTATE WHILE THE NUT IS BEING TURNED.

THE COST OF FURNISHING AND INSTALLING THE EXTRUDED ALUMINUM SIGN AND CROWN PANELS, INCLUDING THE PANELS BOLTS AND POST CLIP ASSEMBLIES, SHALL BE PAID FOR UNDER THE ITEM "SIGN FACE - EXTRUDED ALUMINUM (TYPE IX RETROREFLECTIVE SHEETING).



V.2021.02.05

DESIGNER/DRAFTER: NRG	<p>STATE OF CONNECTICUT DEPARTMENT OF TRANSPORTATION</p>	SIGNATURE/ BLOCK: OFFICE OF ENGINEERING	PROJECT TITLE: INTERCHANGE 57 IMPROVEMENTS ON ROUTE 15 SOUTHBOUND	TOWN: ORANGE	PROJECT NO. 0106-0130
CHECKED BY: CMP		APPROVED BY: <i>Andrew J. Carlini</i>	DATE:	DRAWING TITLE: EXTRUDED ALUMINUM SIGN PANEL MANUFACTURING DETAILS	DRAWING NO. EAS-3
SCALE AS NOTED	Filename: ... \SB_MSH_0106-130_EAS-3.dgn				SHEET NO. 06.03
REV. DATE	REVISION DESCRIPTION	SHEET NO.	Plotted Date: 6/9/2021		