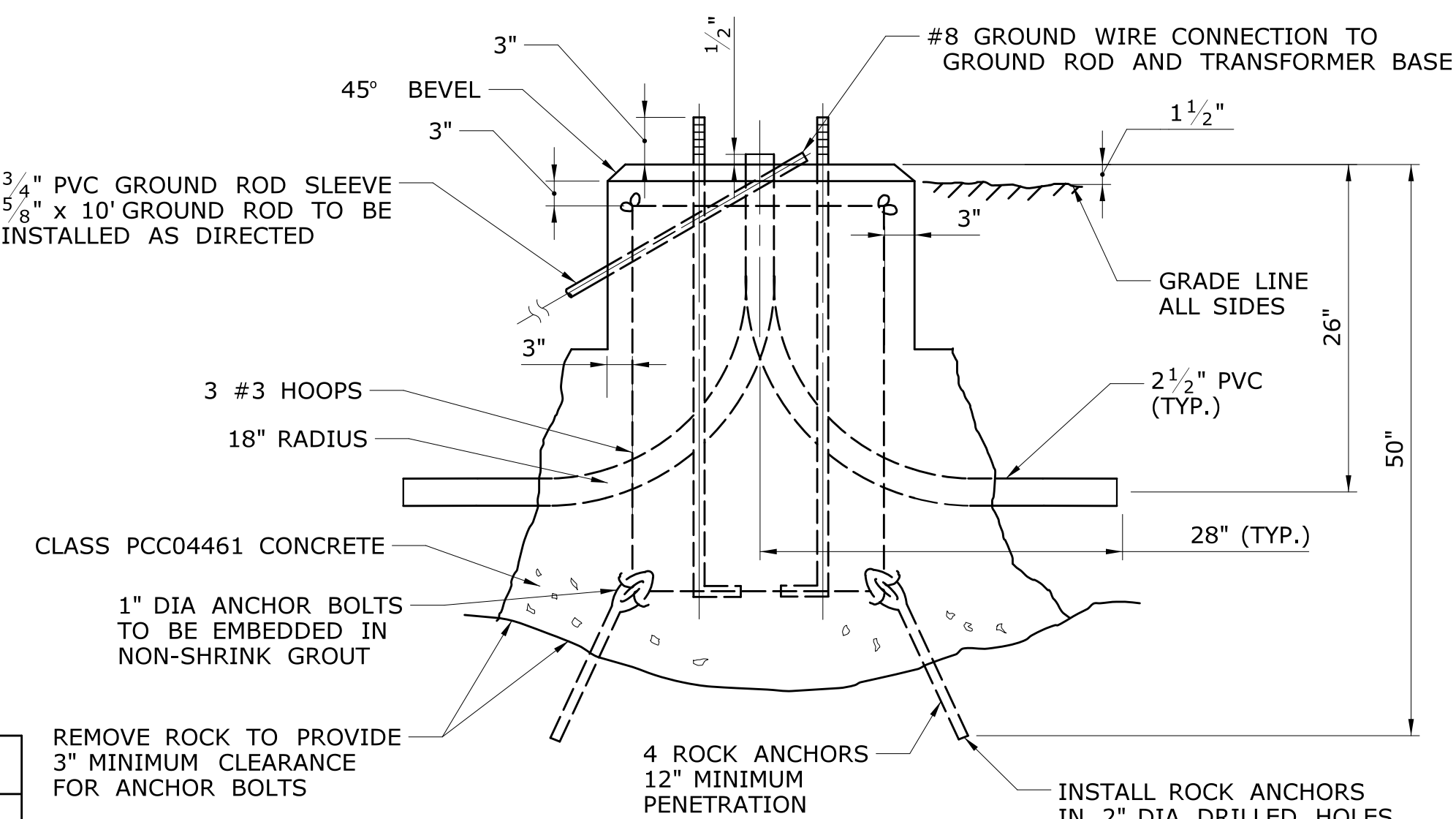
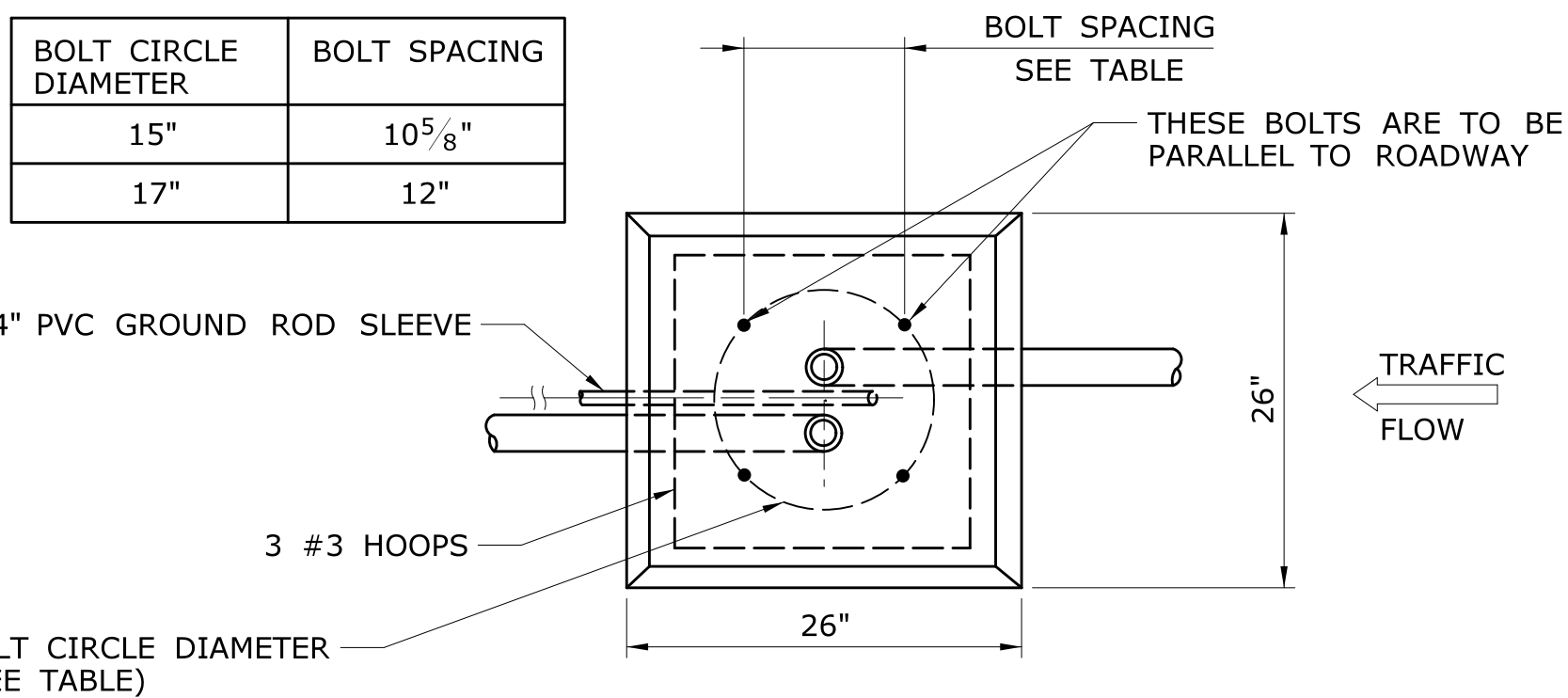


**ALUMINUM LIGHT STANDARD**

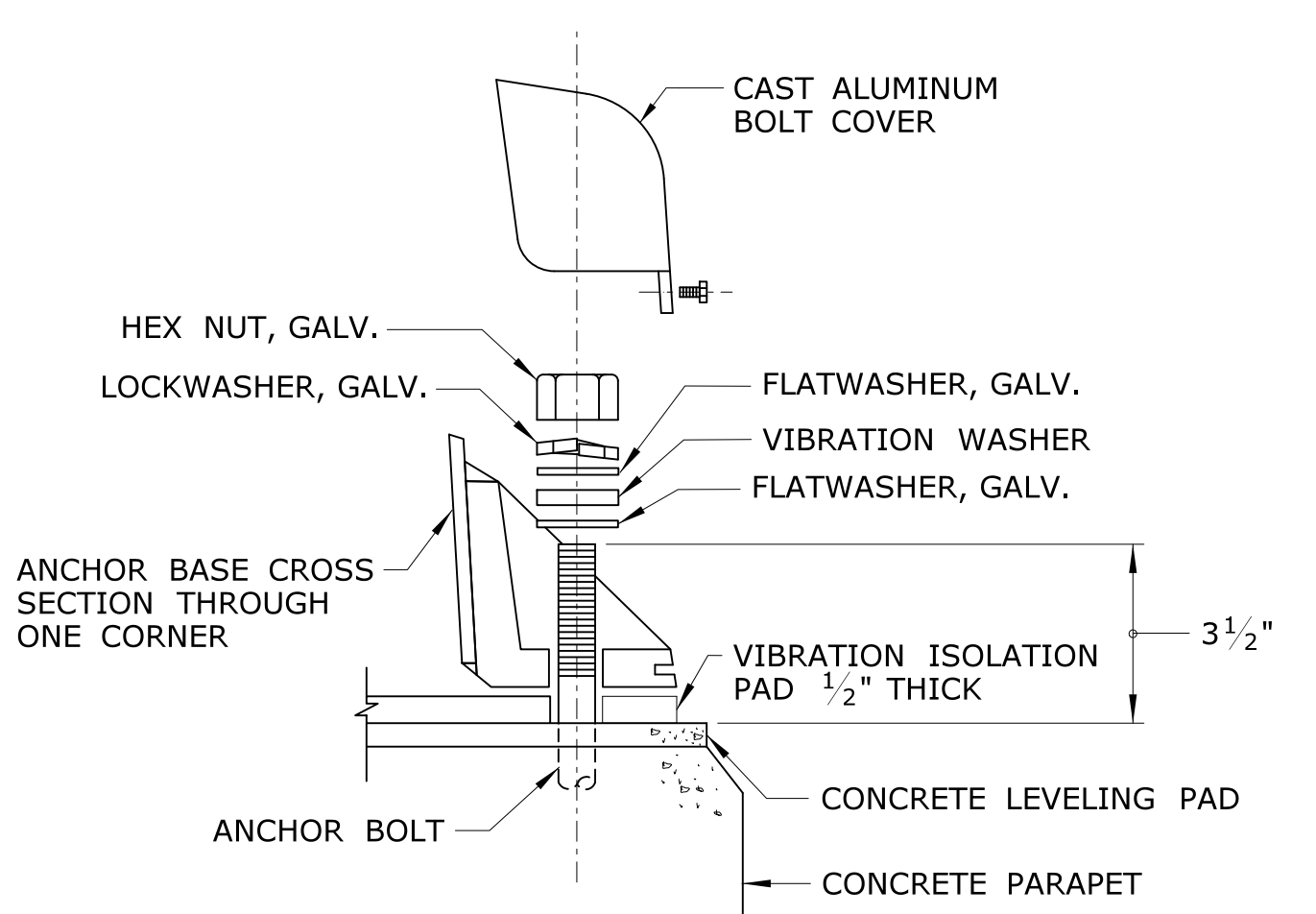
ALUMINUM LIGHT STANDARD - DIMENSION TABLE							
MOUNTING HEIGHT	BRACKET LENGTH	SHAFT DIAMETER		SHAFT WALL THICKNESS	BASE TYPE	ANCHOR BOLT SIZE	BOLT CIRCLE DIAMETER
		BOTTOM	TOP				
30'	6'	8"	6"	.188"	TRANSFORMER	1" x 40"	15"
35'	6'	8"	6"	.188"	TRANSFORMER	1" x 40"	15"
40'	10'	10"	6"	.250"	ANCHOR	1" x 40"	15"
40'	12'	10"	6"	.188"	TRANSFORMER	1" x 40"	15"
40'	15'	10"	6"	.188"	TRANSFORMER	1" x 40"	15"
35'	12'	8"	6"	.250"	TRANSFORMER	1" x 40"	15"
35'	15'	8"	6"	.250"	TRANSFORMER	1" x 40"	15"

**LIGHT STANDARD NOTES:**

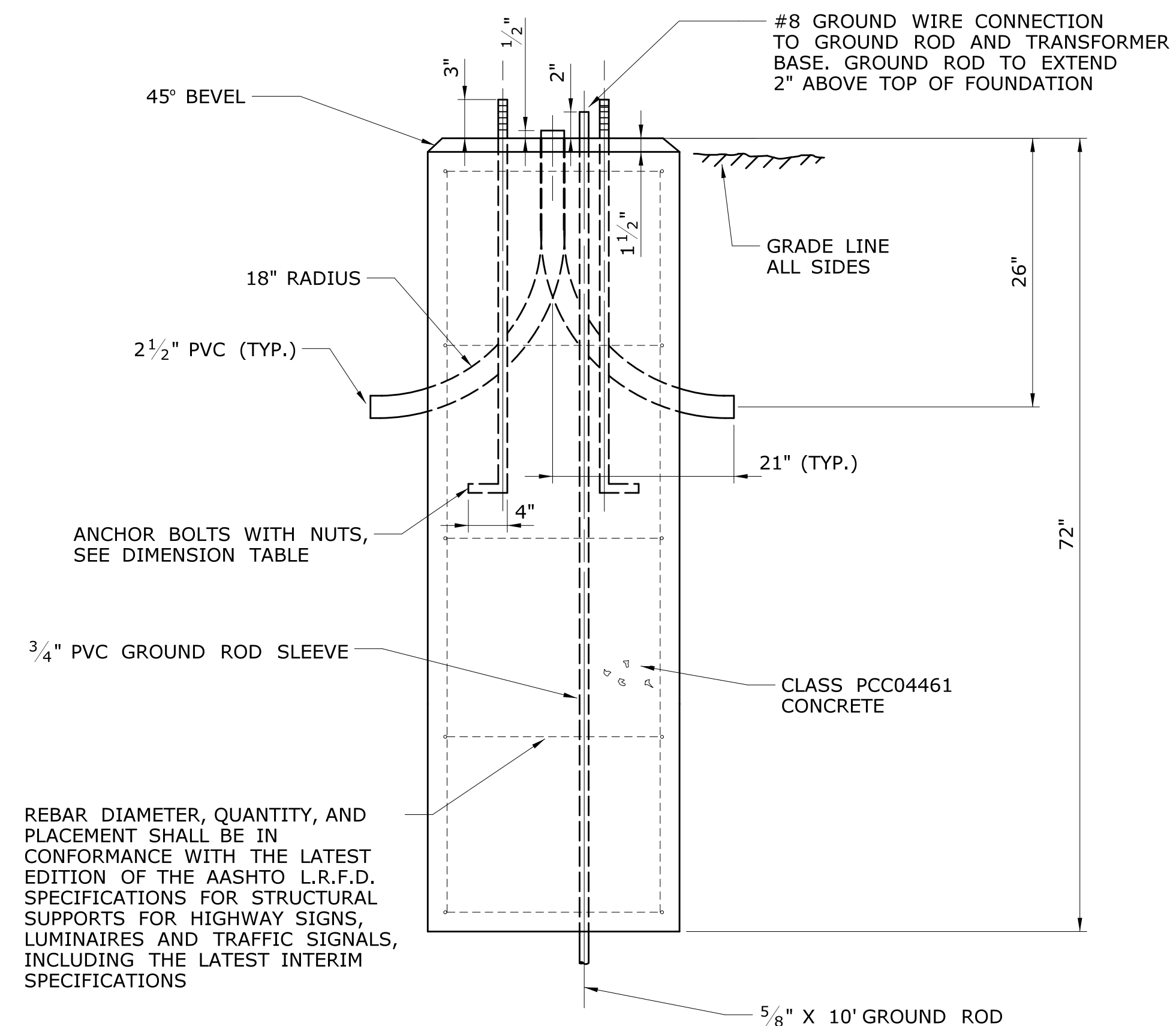
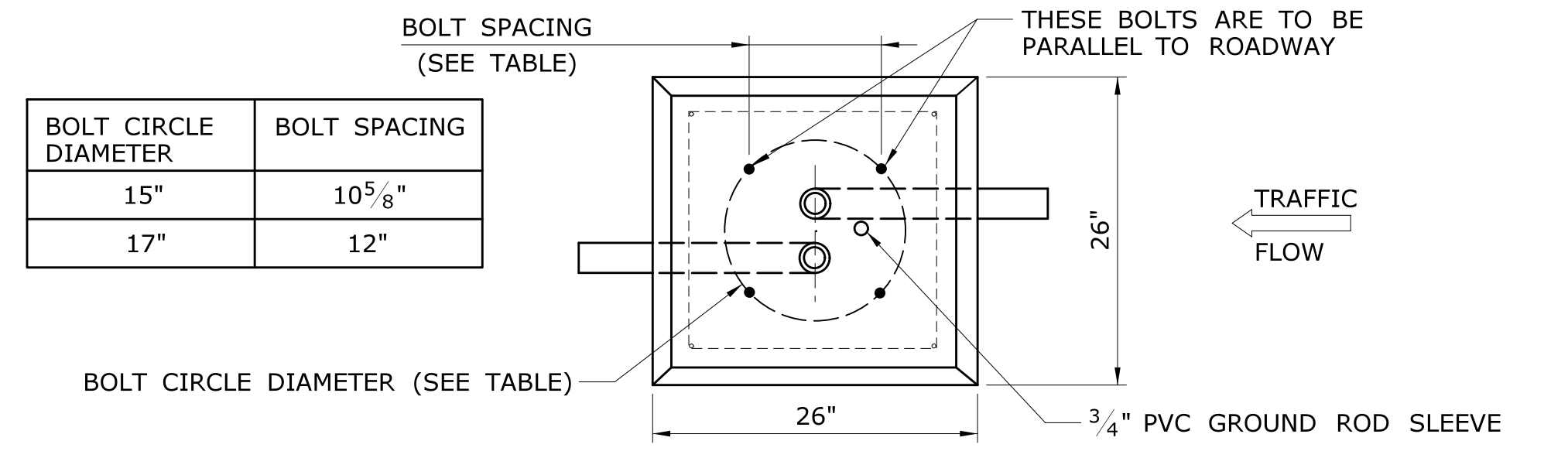
- ALUMINUM ALLOY SHALL BE 6063, T6 TEMPER.
- BOLT CIRCLE SHOWN IS FOR ANCHOR BASE BOTTOM OR TRANSFORMER BASE BOTTOM (WHICHEVER IS APPLICABLE).
- TO BE DESIGNED TO AASHTO "STANDARD SPECIFICATION FOR STRUCTURAL SUPPORTS FOR HIGHWAY SIGNS, LUMINAIRES AND TRAFFIC SIGNALS" FOR 90 M.P.H. WINDS.
- WELDING DESIGN AND FABRICATION SHALL CONFORM TO THE LATEST EDITION OF THE ANSI/AWS D1.2, STRUCTURAL WELDING CODE - ALUMINUM.
- FOR BASE CONNECTION WELDS, FABRICATION INSPECTION AND TESTING SHALL BE PERFORMED AS NECESSARY PRIOR TO ASSEMBLY, DURING ASSEMBLY, DURING WELDING, AND AFTER WELDING, TO ENSURE THAT MATERIALS AND WORKMANSHIP MEET THE REQUIREMENTS OF THE CONTRACT DOCUMENTS. FABRICATION INSPECTION AND TESTING IS THE RESPONSIBILITY OF THE CONTRACTOR. VERIFICATION INSPECTION AND TESTING IS THE PREROGATIVE OF THE ENGINEER (CONNDOT).
- NON-DESTRUCTIVE TESTING FOR ALUMINUM SHALL BE AS FOLLOWS: A RANDOM 25% OF ALL BASE CONNECTION WELDS SHALL BE INSPECTED IN ACCORDANCE WITH ASTM E-165 STANDARD PRACTICE FOR LIQUID PENETRANT INSPECTION METHOD.



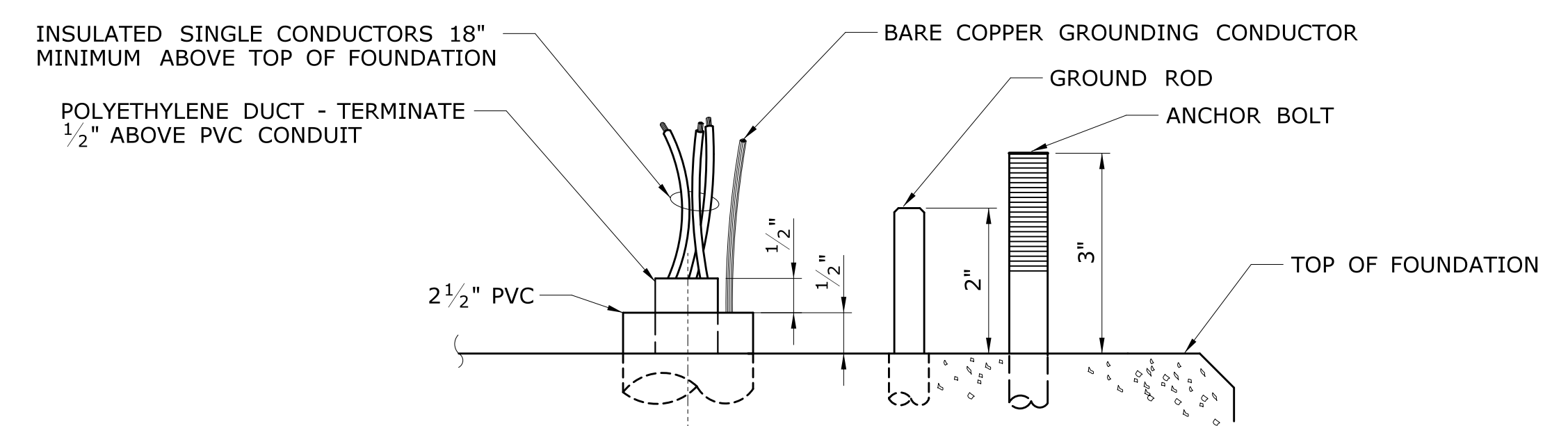
**LIGHT STANDARD FOUNDATION - TYPE II**



**ANCHOR BASE LIGHT STANDARD MOUNTING HARDWARE**



**LIGHT STANDARD FOUNDATION - TYPE I**



**CABLE IN DUCT TERMINATION AT LIGHT STANDARD BASE**

THE DESIGN APPEARS TO CONFORM TO APPLICABLE CRITERIA. APPROVAL IS NOT TO BE CONSTRUED TO MEAN THAT ALL ASPECTS OF THE DESIGN HAVE BEEN PERSONALLY CHECKED BY THE UNDERSIGNED.

TRANSPORTATION PRINCIPAL ENGINEER

**ADDENDUM NO. 2**

1	12/18/20	ADDED TWO POLE SIZES TO TABLE	09.24.A2	DESIGNER/DRAFTER: MSB	<p><b>STATE OF CONNECTICUT</b> DEPARTMENT OF TRANSPORTATION</p>	<p>SIGNATURE/BLOCK: <i>[Signature]</i></p> <p>OFFICE OF ENGINEERING</p> <p>APPROVED BY: <i>[Signature]</i></p>	<p>PROJECT TITLE: <b>RESURFACING, BRIDGE, AND SAFETY IMPROVEMENTS ON ROUTE 2</b></p>	<p>TOWN: <b>TOWNS OF EAST HARTFORD, HARTFORD, WETHERSFIELD AND GLASTONBURY</b></p>	<p>PROJECT NO. <b>42-317</b></p> <p>DRAWING NO. <b>ILL-24</b></p> <p>SHEET NO. <b>09.24.A2</b></p>
				CHECKED BY: JA					
				NO SCALE					