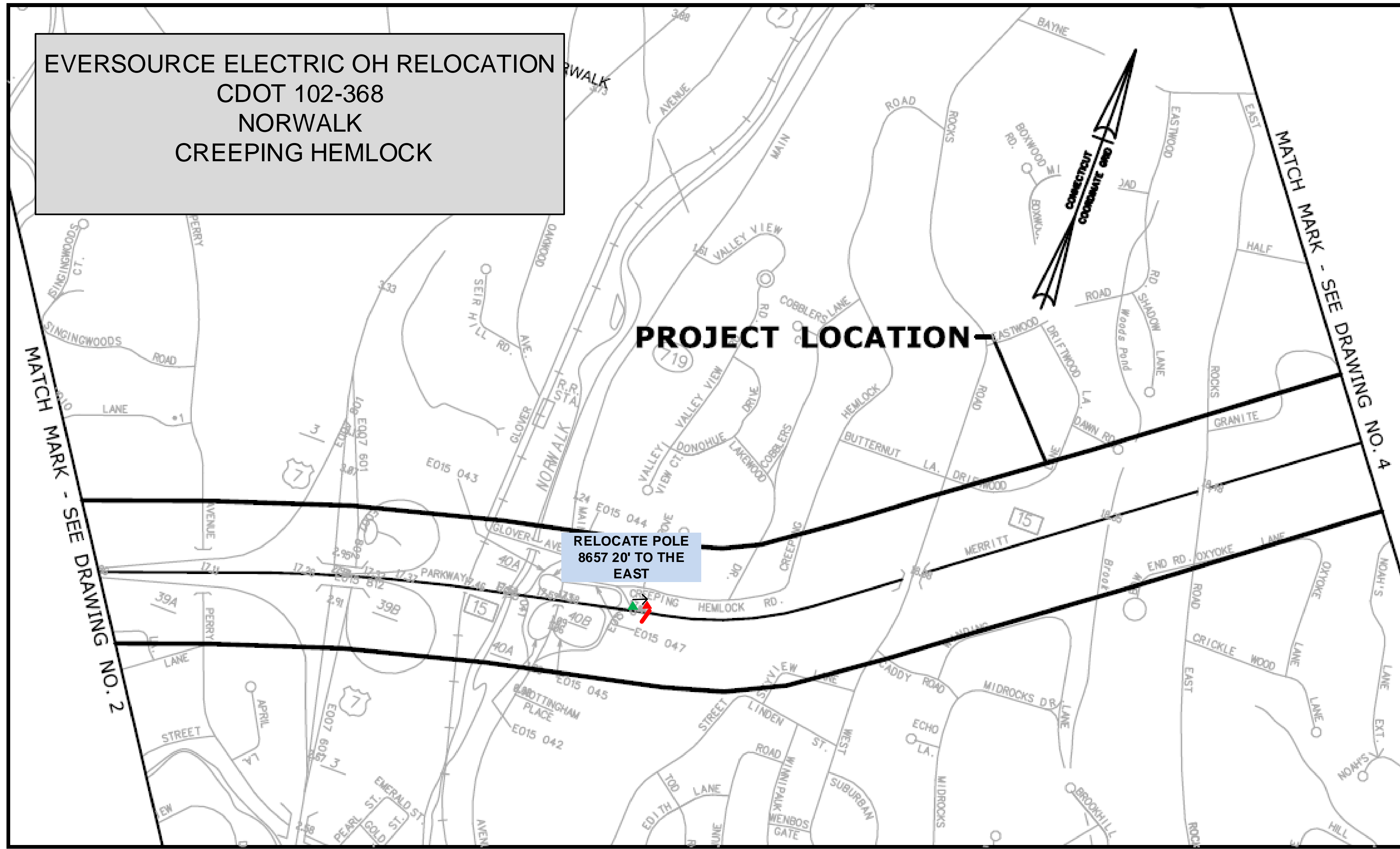


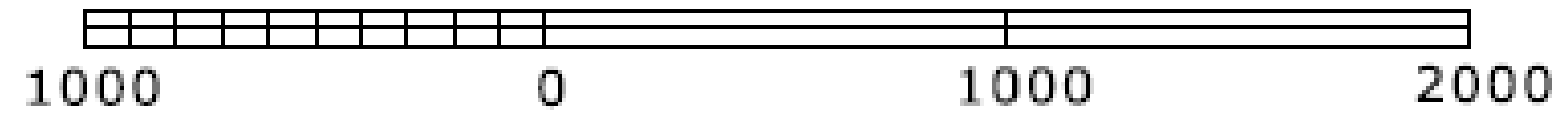


EVERSOURCE ELECTRIC OH RELOCATION  
 CDOT 102-368  
 NORWALK  
 CREEPING HEMLOCK



RELOCATE POLE  
 8657 20' TO THE  
 EAST

SCALE IN FEET



UTILITY WORK BY OTHERS  
 FOR INFORMATION PURPOSES ONLY

STATE PROJECT NO.:  
 102-368  
 CITY/TOWN:  
 NEW CANAAN, NORWALK  
 & WESTPORT

STATE OF CONNECTICUT  
 DEPARTMENT OF TRANSPORTATION  
 MERRITT PARKWAY (ROUTE 15)  
 SAFETY IMPROVEMENTS RESURFACING,  
 ENHANCEMENTS AND BRIDGE IMPROVEMENTS

OFFICE OF ENGINEERING  
 DATE: 02/02/17  
 DRAWING NO. 3 OF 4

NEW SHEET ADDED BY ADDENDUM NO. 2

REV.	DATE	REVISION DESCRIPTION	SHEET NO.	Plotted Date: 10/21/2020

DESIGNER/DRAFTER:  
 CHECKED BY:

STATE OF CONNECTICUT  
 DEPARTMENT OF TRANSPORTATION  
 Filename: ...Eversource Utility Pole Relocation Plan.dgn

SIGNATURE/  
 BLOCK:  
 OFFICE OF ENGINEERING  
 APPROVED BY:  
*Matthew Vail*

PROJECT TITLE:  
 ROUTE 15 SAFETY IMPROVEMENTS,  
 RESURFACING, ENHANCEMENTS,  
 AND BRIDGE IMPROVEMENTS

TOWN:  
 NORWALK  
 WESTPORT  
 DRAWING TITLE:  
 EVERSOURCE UTILITY  
 RELOCATION PLAN

PROJECT NO.  
 0102-0368  
 DRAWING NO.  
 UTL-01  
 SHEET NO.  
 06.02.02.A2