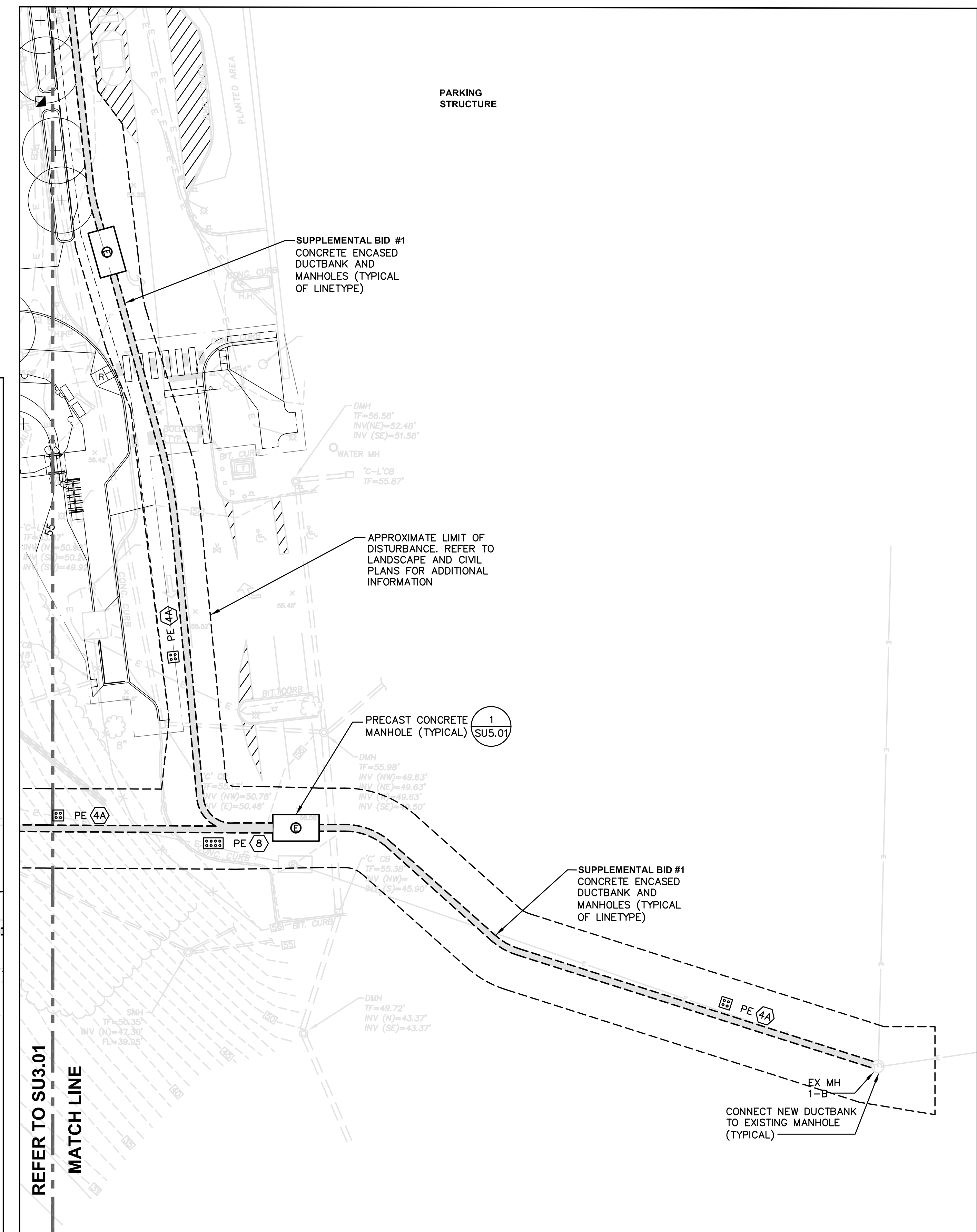


1 SITE UTILITY - PART PLAN
SU3.02 1"=20'



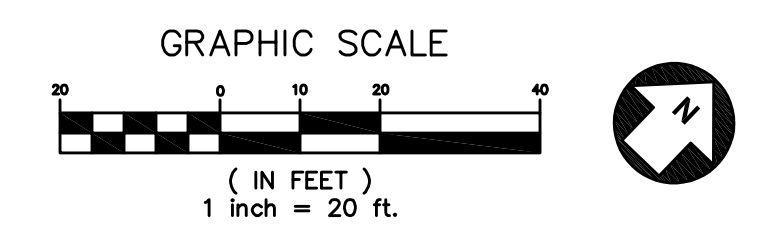
2 SITE UTILITY - PART PLAN
SU3.02 1"=20'

CONDUIT SCHEDULE

- ② 2-5" CONDUITS ENCASED IN CONCRETE
- ④ 4-4" CONDUITS ENCASED IN CONCRETE
- ④A 4-5" CONDUITS ENCASED IN CONCRETE
- ⑥ 8-4" CONDUITS ENCASED IN CONCRETE
- ⑥A 6-5" CONDUITS ENCASED IN CONCRETE
- ⑥B 8-5" CONDUITS ENCASED IN CONCRETE

UTILITY GENERAL NOTES:

1. FOR UTILITY TRENCH DETAILS, REFER TO SU5.01
2. FINAL TOP OF FRAME ELEVATIONS FOR NEW UTILITY STRUCTURES MAY NEED TO BE FIELD ADJUSTED TO COORDINATE WITH SITE CONDITIONS AND FINAL GRADING (TYPICAL).
3. CIVIL UTILITIES SHOWN FOR REFERENCE ONLY



drawing title SITE UTILITY PLAN		STATE OF CONNECTICUT DEPARTMENT OF ADMINISTRATIVE SERVICES	
professional seal	REVISIONS		drawing prepared by BVH INTEGRATED SERVICES 208 WEST NEWBERRY ROAD BLOOMFIELD, CT, 06002
mark	date	description	date 08/16/2019
01	08/16/2019	DOCUMENTS FOR BID	scale AS NOTED
02	09/18/2019	ADDENDUM #2	project SCSU NEW HHS BUILDING 501 CRESCENT STREET NEW HAVEN, CT 06050
project no. BRS-329			drawn by ALP
drawing no. SU3.02			approved by JRV