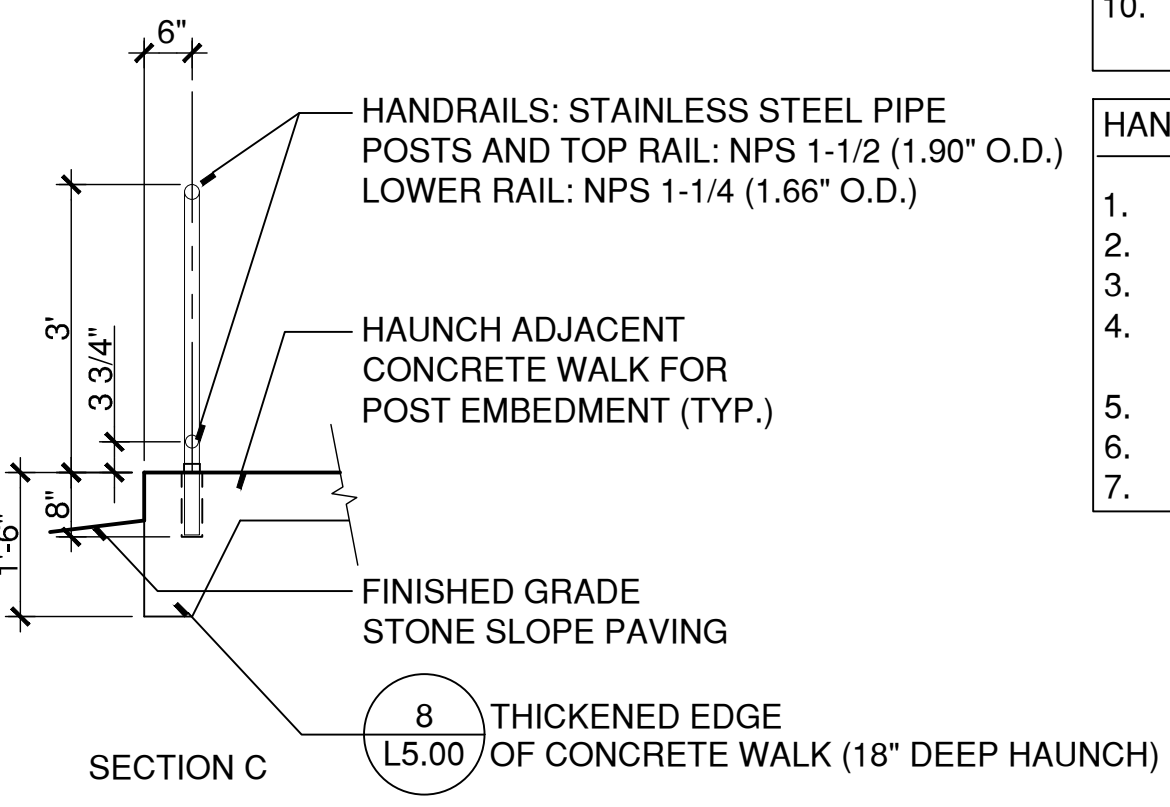
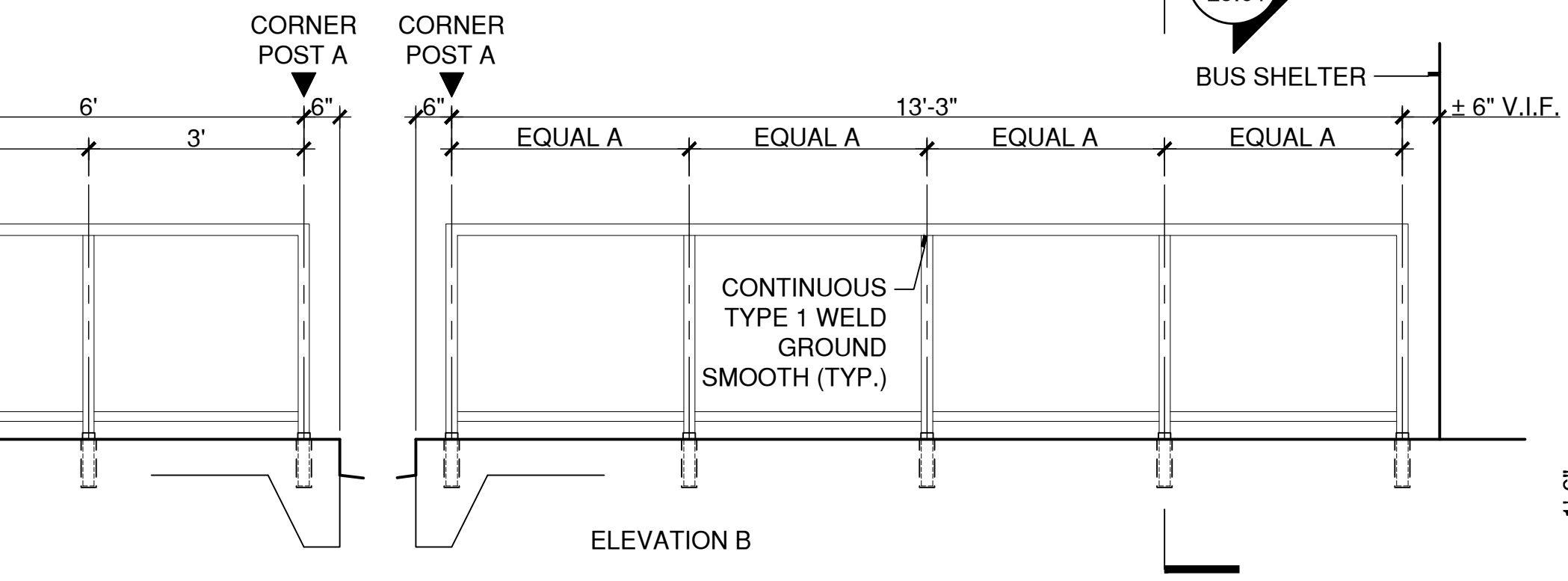
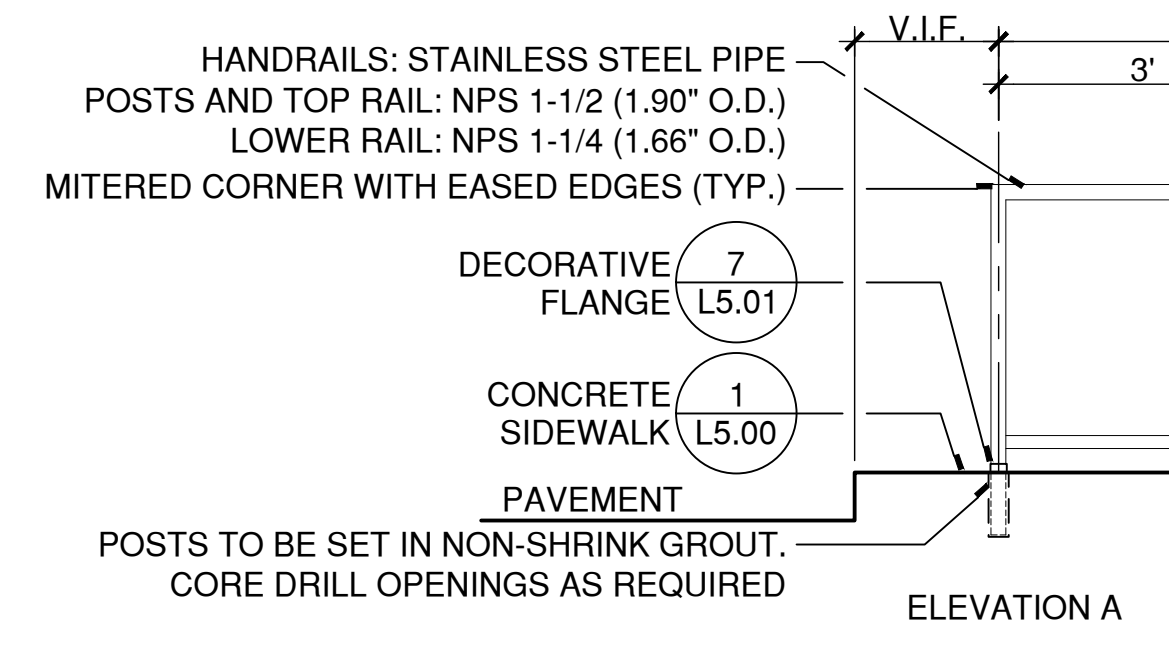
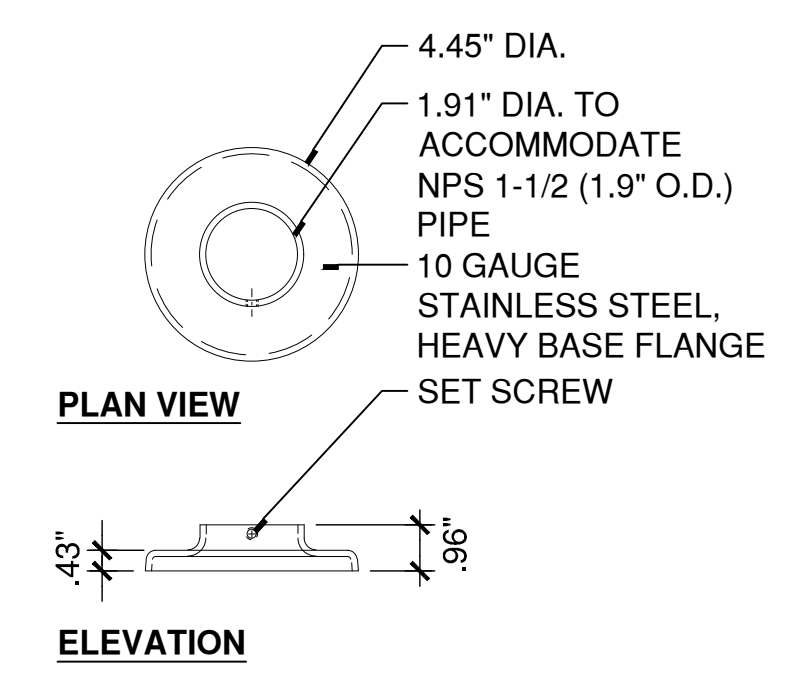
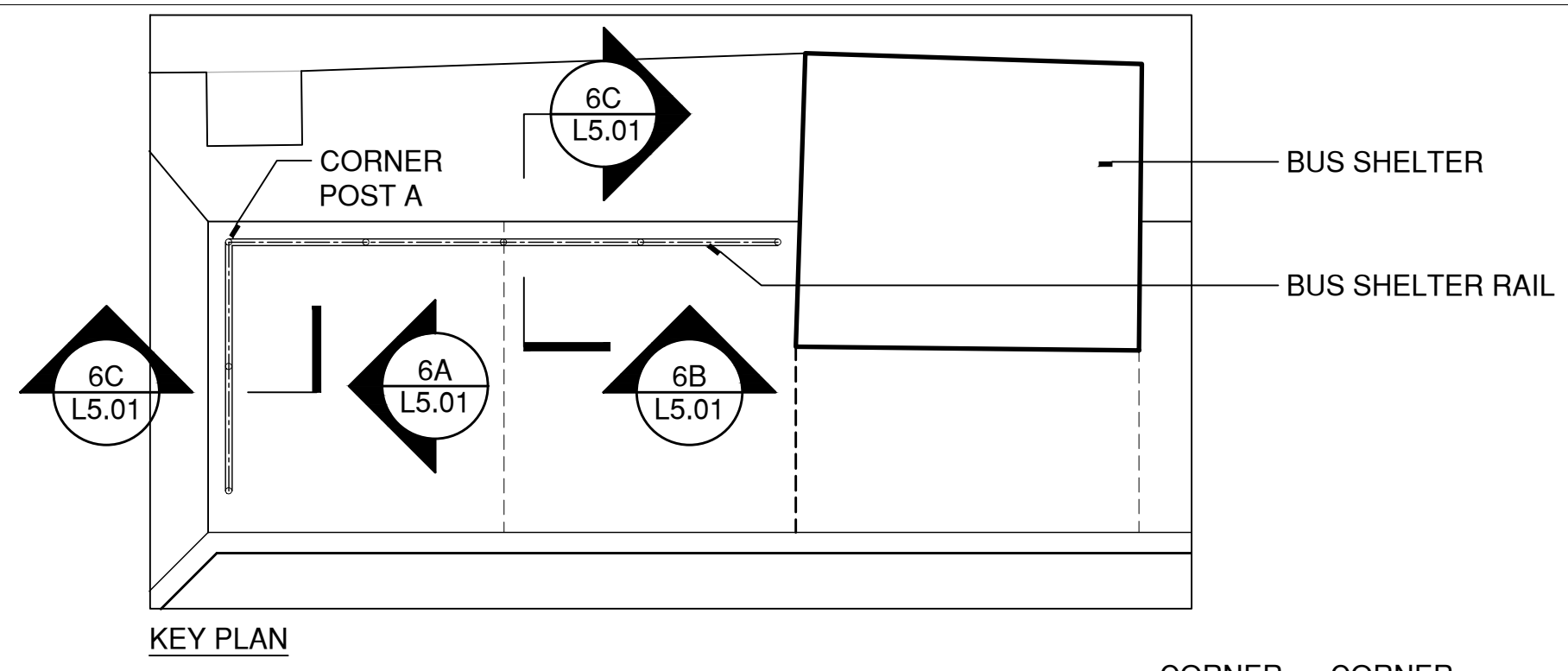


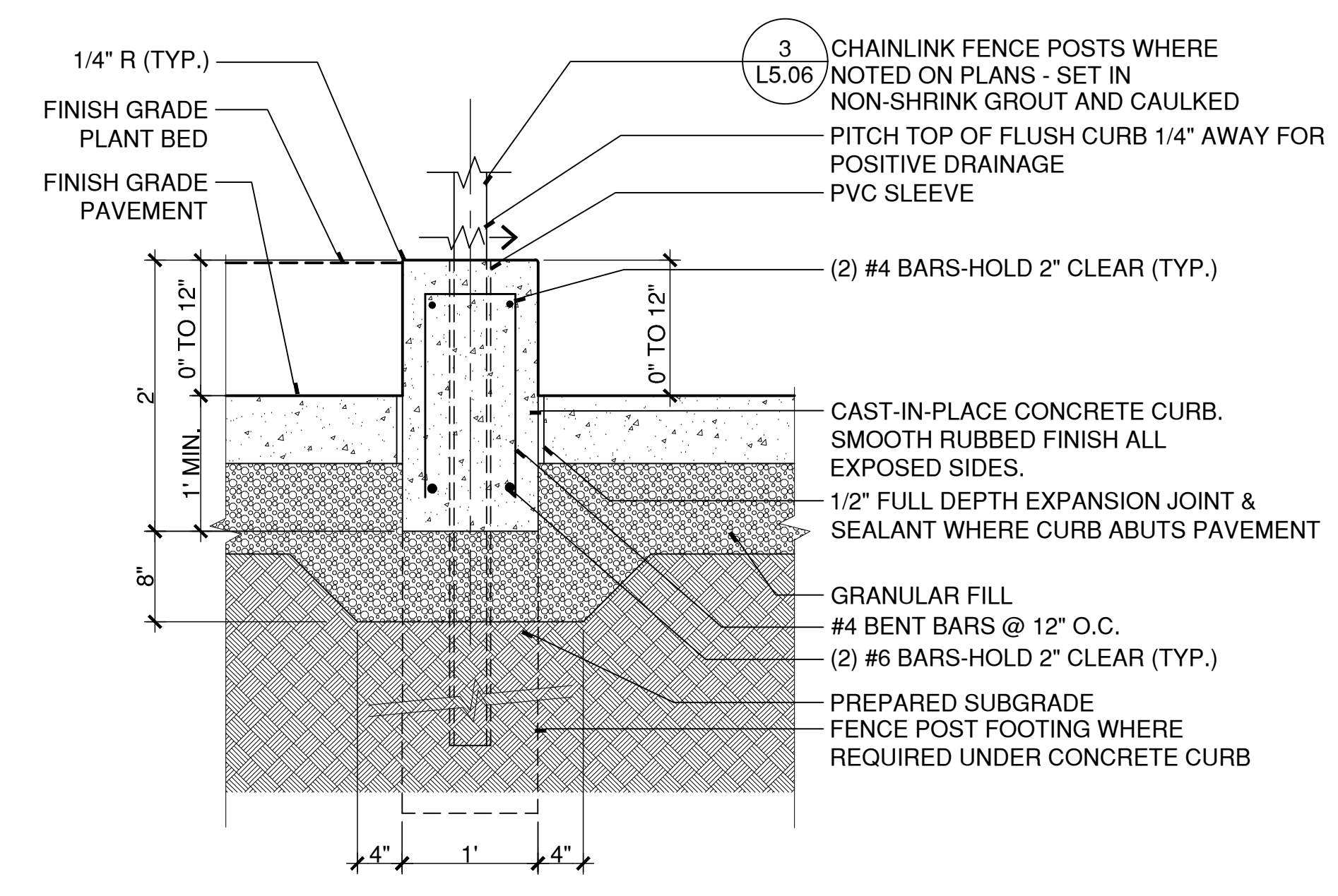
- CONCRETE GENERAL NOTES**
1. REINFORCING, REINFORCING ACCESSORIES AND DOWELS FOR ALL EXTERIOR CONCRETE INCLUDING BUT NOT LIMITED TO SIDEWALKS, PAVEMENT, PADS AND SITE WALLS SHALL BE EPOXY COATED.
  2. PROVIDE CLEARANCE FROM EDGE OF REINFORCING TO EDGE OF CONCRETE AS NOTED ON STRUCTURAL DRAWINGS (\$0.00, CONCRETE, ITEM 21) UNLESS NOTED OTHERWISE.
  3. BASE AND BACKFILL REQUIREMENTS SHALL COMPLY WITH RECOMMENDATIONS IN PROJECT GEOTECHNICAL REPORT.
  4. BACKFILL EVENLY BOTH SIDES OF WALLS.
  5. SIDEWALKS, PAVEMENTS AND RAMPS: APPLY BROOM FINISH PERPENDICULAR TO MAIN TRAFFIC ROUTE, OR AS INDICATED ON JOINT LAYOUT PLANS. TOOL EDGES OF PAVING AND ALL JOINTS WITH EDGING TOOL TO A 1/4" RADIUS AFTER INITIAL FLOATING AND REPEAT AFTER APPLYING BROOM FINISH. ELIMINATE EDGING TOOL MARKS ON CONCRETE SURFACES.
  6. STEPS: APPLY BROOM FINISH PERPENDICULAR TO MAIN TRAFFIC ROUTE WITH 1 1/2" WIDE SMOOTH TROWELED EDGE AT NOSING. PROVIDE SMOOTH RUBBED FINISH ON VERTICAL FACES.
  7. WALLS, SEAT STEPS, AND CURBS: PROVIDE SMOOTH RUBBED FINISH ON ALL EXPOSED VERTICAL SIDES AND TOPS. CONTINUE RUBBED FINISH A MINIMUM OF 6" BELOW FINISH GRADE. INCORPORATE REQUIRED JOINTS INTO REVEAL PATTERN.
  8. CONTRACTOR SHALL SUBMIT SHOP DRAWINGS FOR REVIEW AND APPROVAL INDICATING JOINT LOCATIONS, FINISHES AND REVEAL PATTERNS.
  9. WHERE SUBSURFACE PIPING PASSES THROUGH WALLS, SEAT STEPS OR OTHER STRUCTURES, REFER TO TYPICAL DETAIL OF PIPE PENETRATIONS THRU FOUNDATION WALLS (\$6.00). COORDINATE ALL INVERTS WITH CIVIL AND UTILITY DRAWINGS.
  10. REFER TO CAST-IN-PLACE CONCRETE AND CONCRETE PAVING SPECIFICATIONS FOR ADDITIONAL REQUIREMENTS AND INFORMATION.

- HANDRAIL GENERAL NOTES**
1. ALL WELDS TO BE TYPE I CONTINUOUS.
  2. ARCUT PIPE NOTCHER OR SIMILAR DEVICES TO BE USED TO MATCH CONTOUR OF PIPES TO BE JOINED.
  3. PROVIDE EXPANSION JOINT FOR RAILS WITH CONTINUOUS RUNS IN EXCESS OF 40 FEET AS SPECIFIED.
  4. EXTEND POSTS 8" INTO THICKENED EDGE OF CONCRETE SIDEWALK, CONCRETE SLAB, TOP OF WALL OR CONCRETE FOOTING.
  5. CORE DRILL OPENINGS SO THAT INSIDE DIAMETER OF OPENING IS 3/4" LARGER THAN OUTSIDE DIAMETER OF POST.
  6. POST TO BE SET IN NON-SHRINK, NON-METALLIC GROUT.
  7. PROVIDE DECORATIVE FLANGES AT ALL POSTS. MATERIAL AND FINISH SHALL MATCH POSTS.

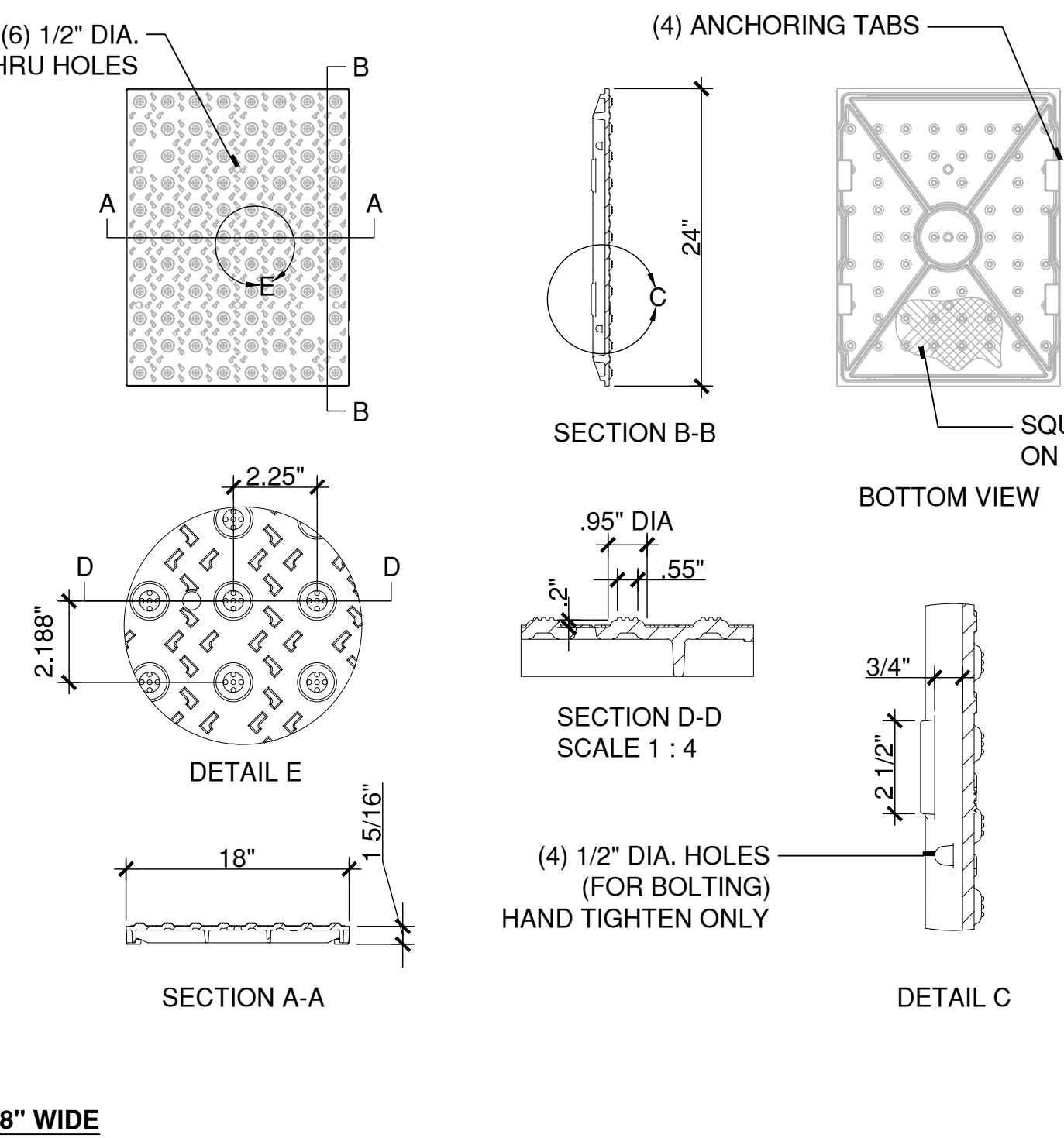
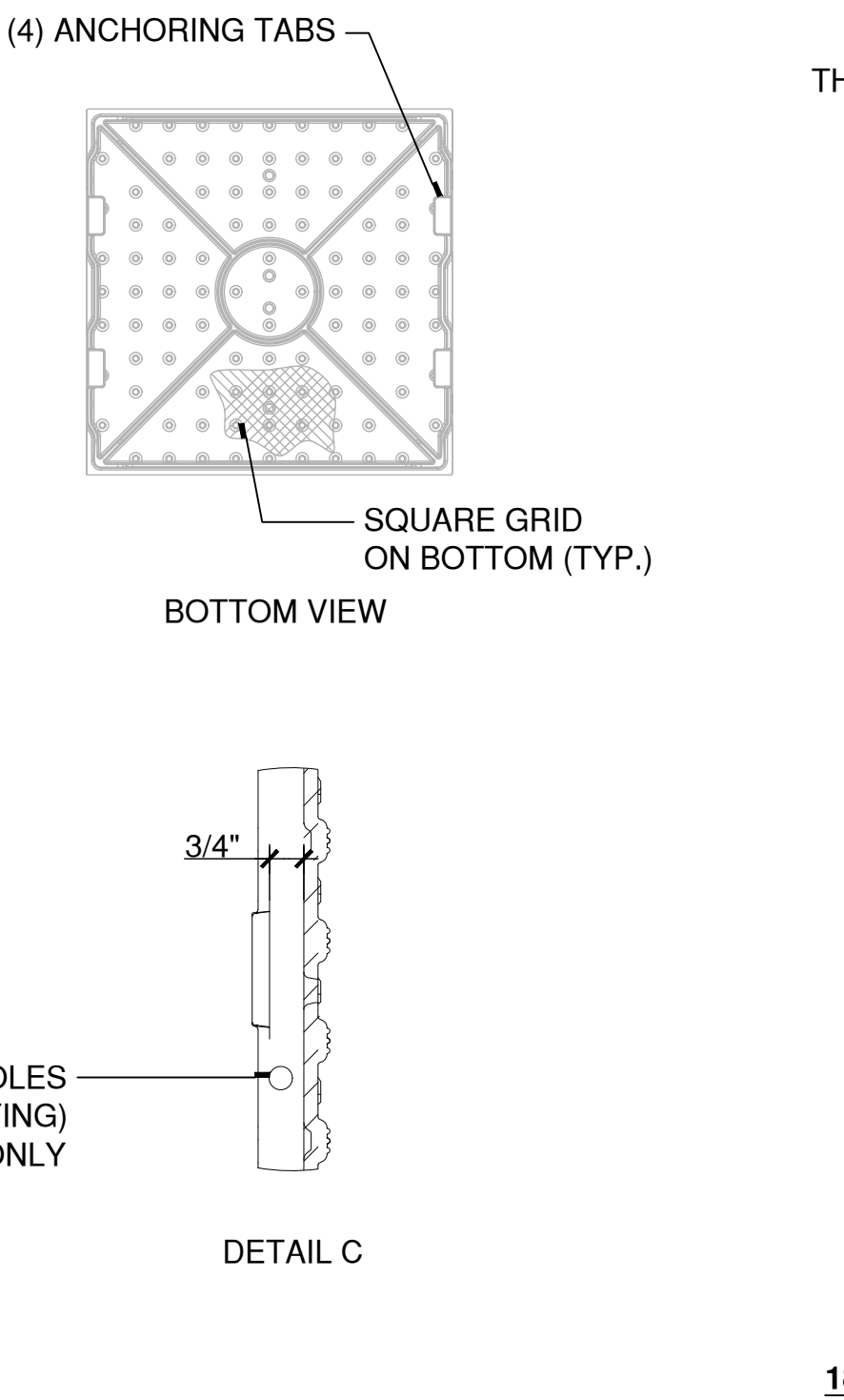
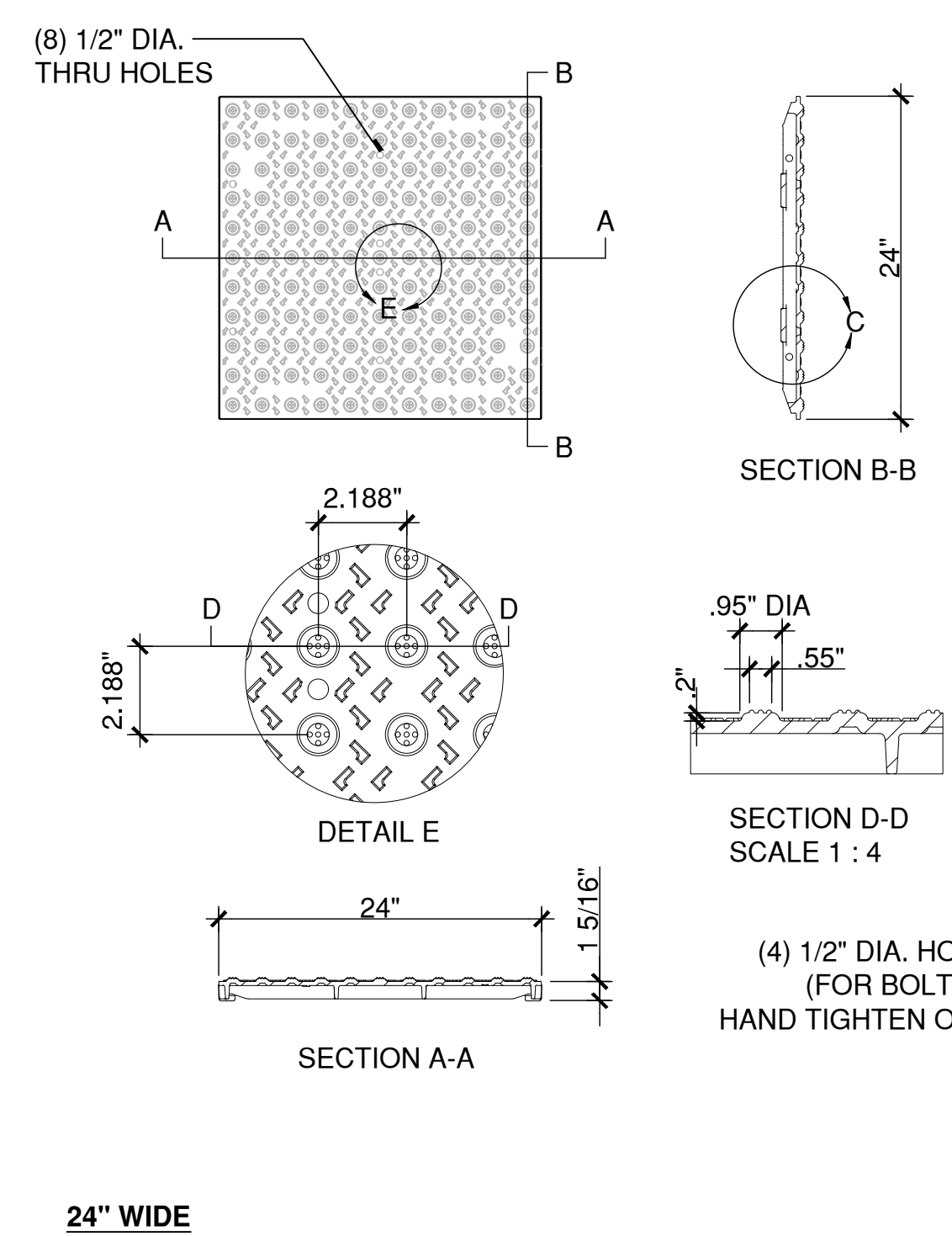
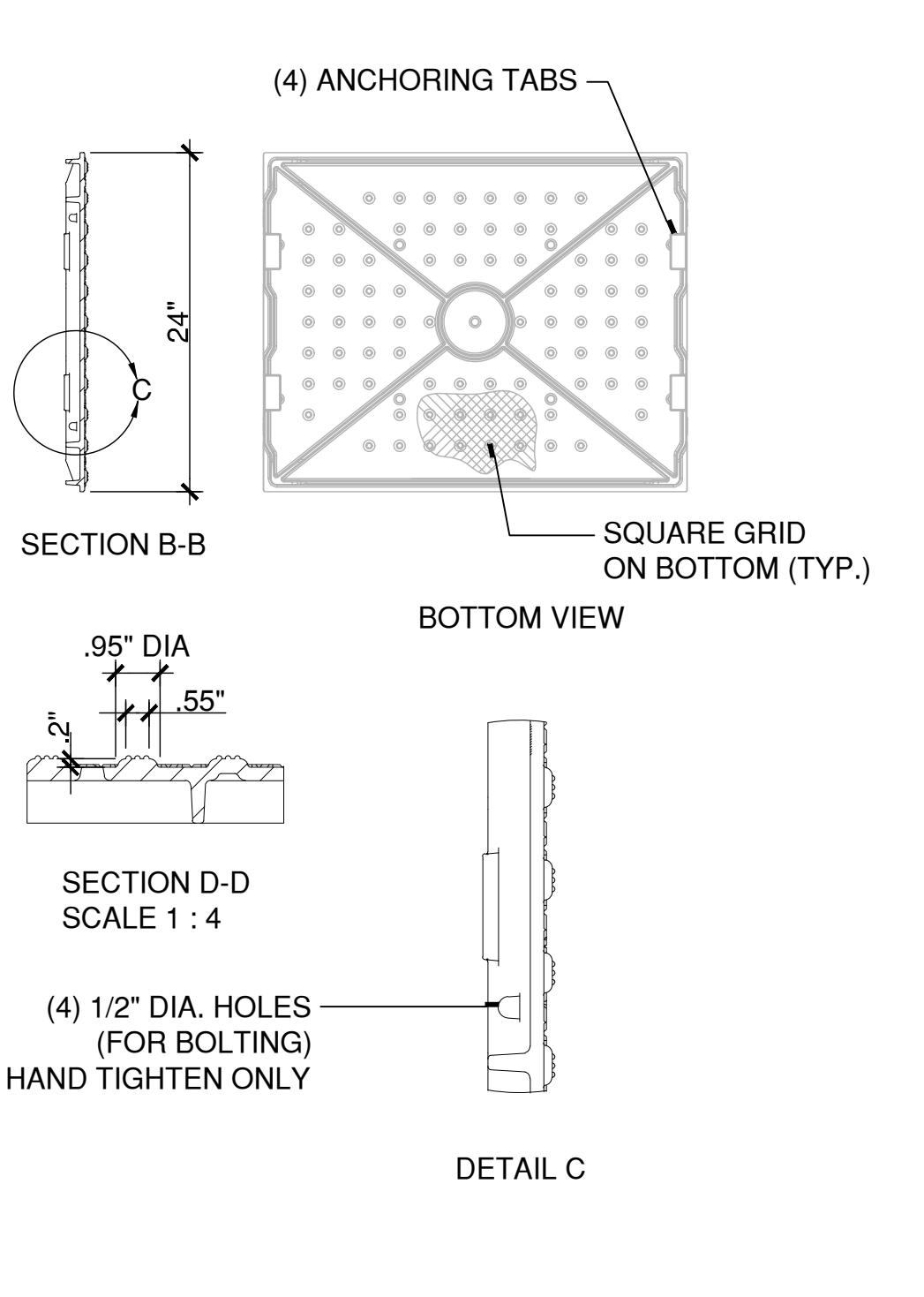
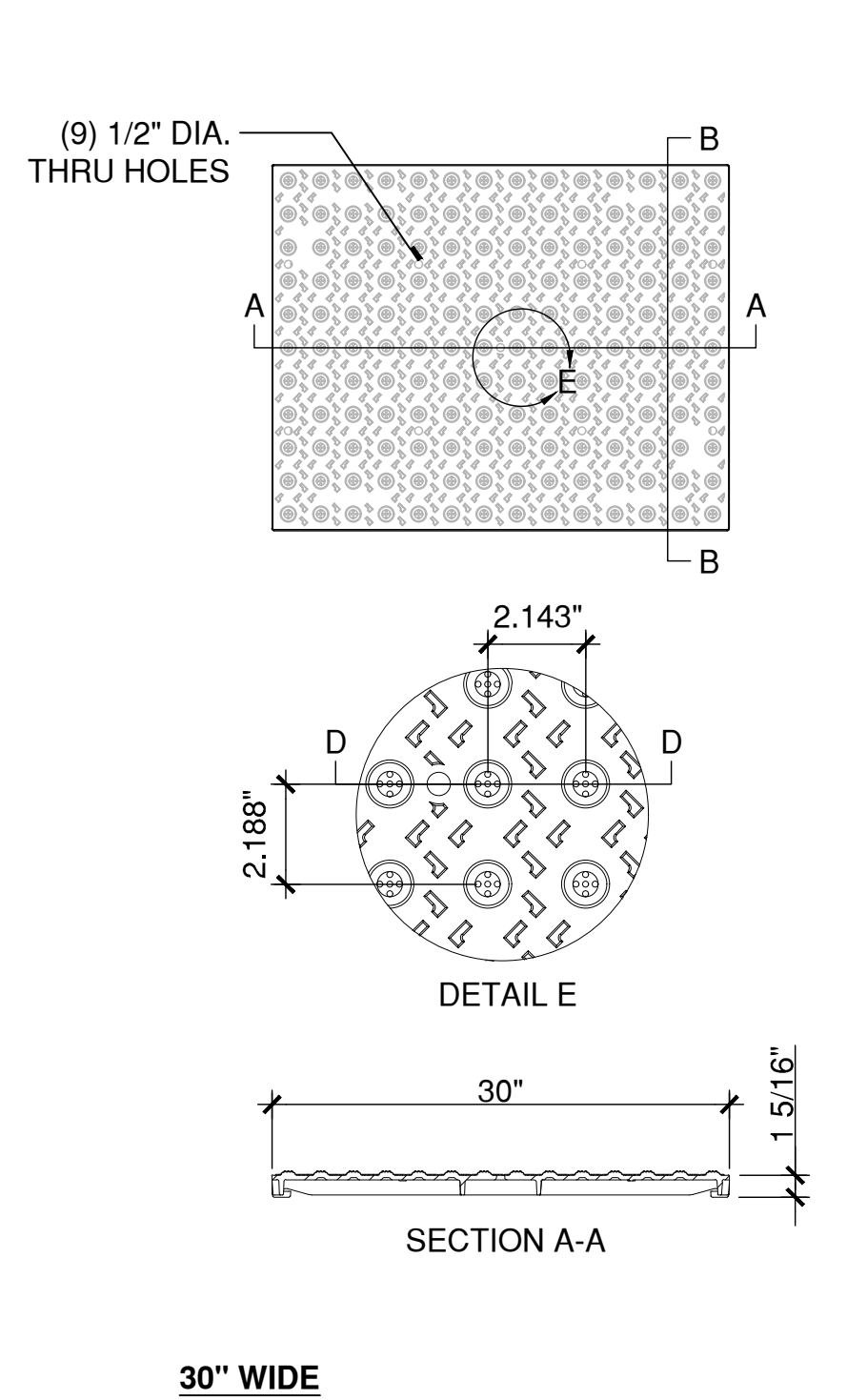


**7 DECORATIVE FLANGE**  
SCALE: 3/8"=1" W:\20160114\CONDOCC\DETAILS\DECORATIVE FLANGE.DWT

**6 BUS SHELTER RAIL**  
SCALE: 1/2"=1" BUS SHELTER RAIL.DWG

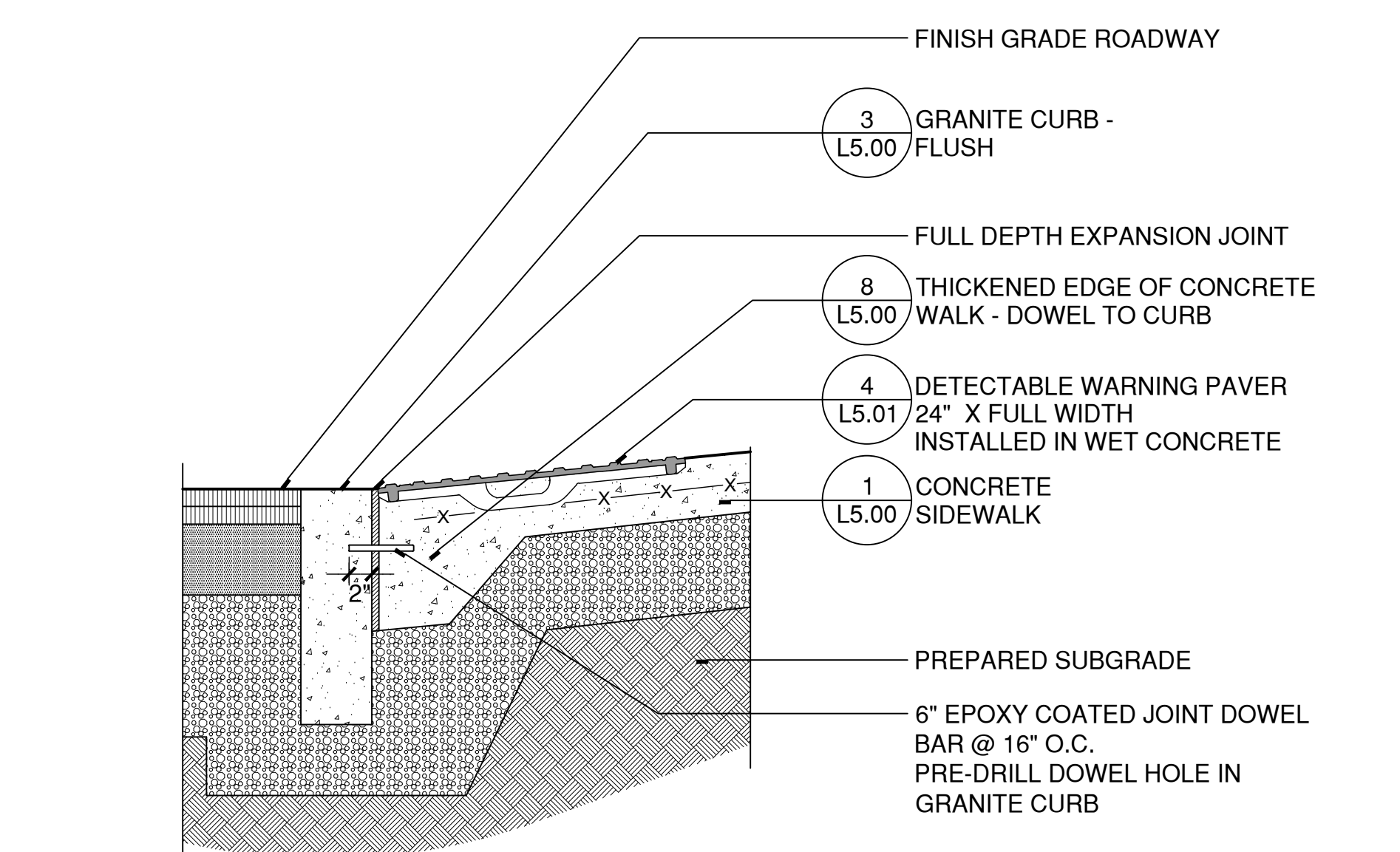


**2 CAST-IN-PLACE CONCRETE CURB**  
SCALE: 1"=1" 321613-C.DWG

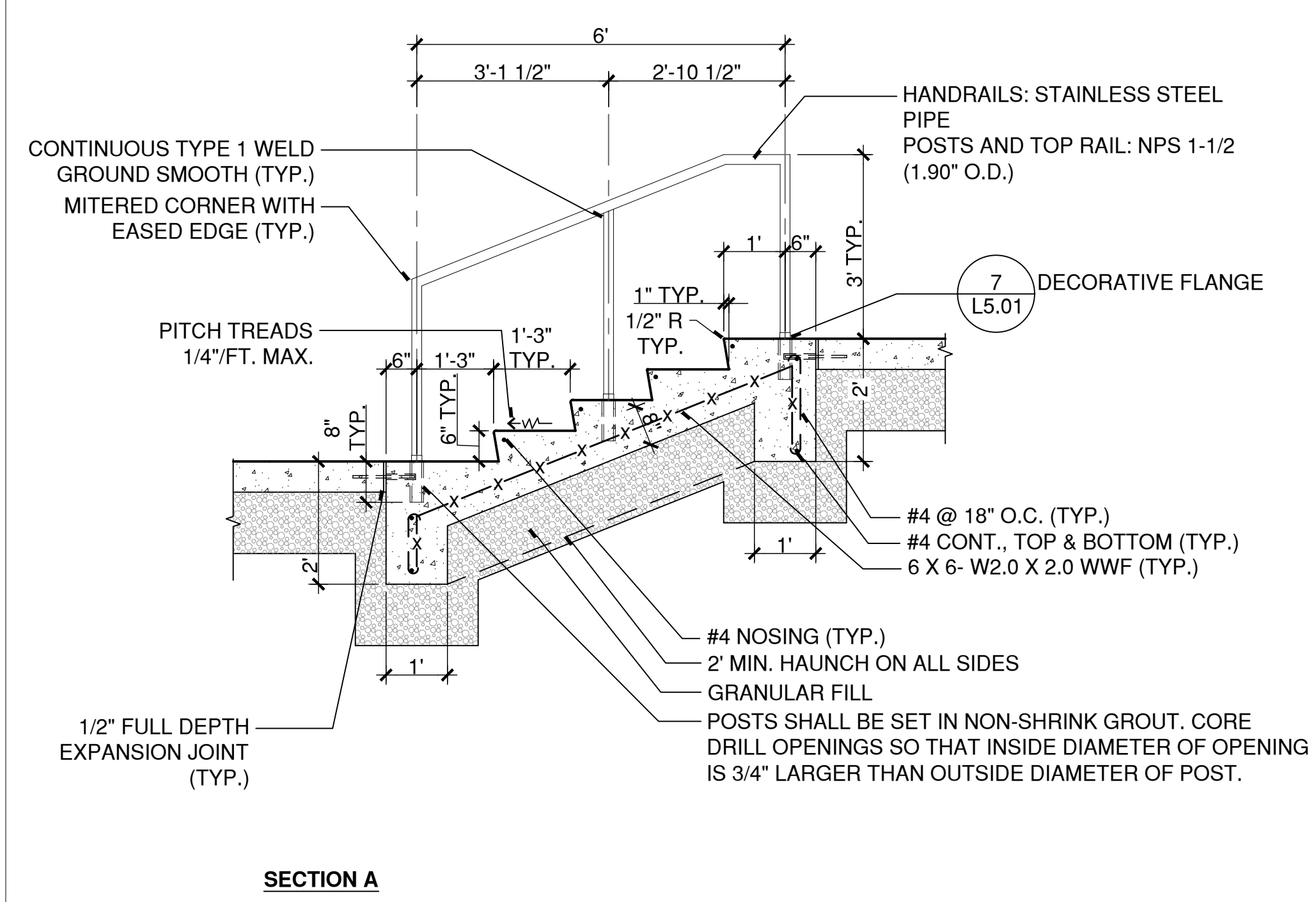


**4 DETECTABLE WARNING PAVER**  
SCALE: 1"=1" W:\20160114\CONDOCC\DETAILS\DETECTABLE WARNING PAVER.DWT

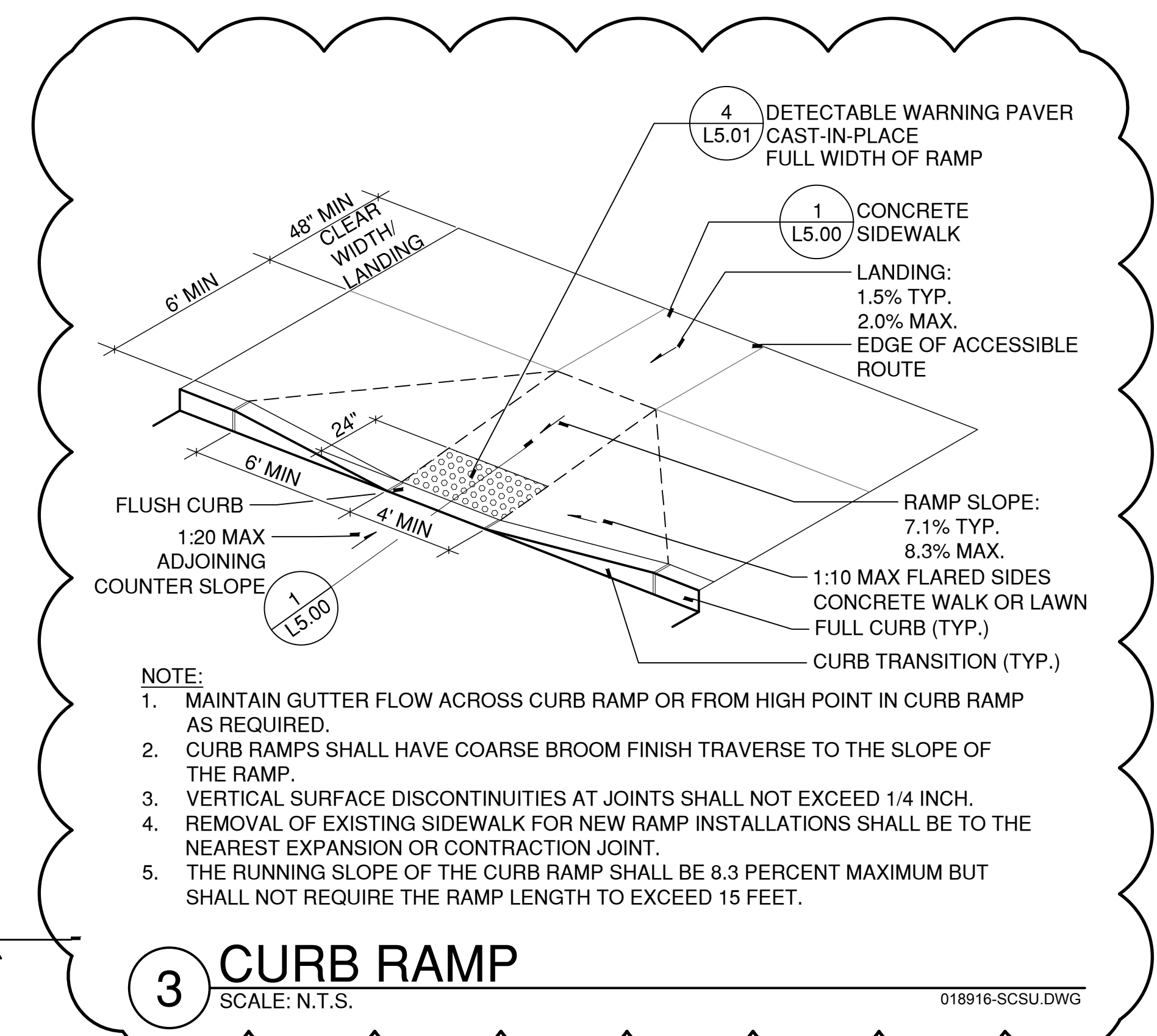
- NOTES:  
1. INSTALLATION TO BE COMPLETED IN ACCORDANCE WITH MANUFACTURER'S SPECIFICATIONS.  
2. DO NOT SCALE DRAWINGS.



**1 DETECTABLE WARNING PAVER AT CONCRETE CURB RAMP**  
SCALE: 1"=1" X:\CAD\STANDARD\DETAILS\321728-B.DWG



**5 QUAD STEPS**  
SCALE: 1/2"=1" QUAD STEPS.DWG



**3 CURB RAMP**  
SCALE: N.T.S. 018916-SCSU DWG

- NOTE:  
1. MAINTAIN GUTTER FLOW ACROSS CURB RAMP OR FROM HIGH POINT IN CURB RAMP AS REQUIRED.  
2. CURB RAMPS SHALL HAVE COARSE BROOM FINISH TRAVERSE TO THE SLOPE OF THE RAMP.  
3. VERTICAL SURFACE DISCONTINUITIES AT JOINTS SHALL NOT EXCEED 1/4 INCH.  
4. REMOVAL OF EXISTING SIDEWALK FOR NEW RAMP INSTALLATIONS SHALL BE TO THE NEAREST EXPANSION OR CONTRACTION JOINT.  
5. THE RUNNING SLOPE OF THE CURB RAMP SHALL BE 8.3 PERCENT MAXIMUM BUT SHALL NOT REQUIRE THE RAMP LENGTH TO EXCEED 15 FEET.

drawing title		REVISIONS		STATE OF CONNECTICUT	
SITE DETAILS		mark	date	DEPARTMENT OF ADMINISTRATIVE SERVICES	
professional seal		01	08/16/2019	drawing prepared by: RICHTER & CEGAN INC.	
		02	09/26/2019	8-B Canal Court, Box 567, Avon, CT 06001	
				date: 08/16/2019	
				scale: As Noted	
				project: SCSU NEW HHS BUILDING	drawn by: CEJ
				501 CRESCENT STREET	approved by: WCR
				NEW HAVEN, CT 06050	drawing no.:
				project no.:	L5.01
				BI-RS-329	

W:\20160114\CONDOCC\Details\160111-501.dwg September 25, 2019 - 9:18 AM