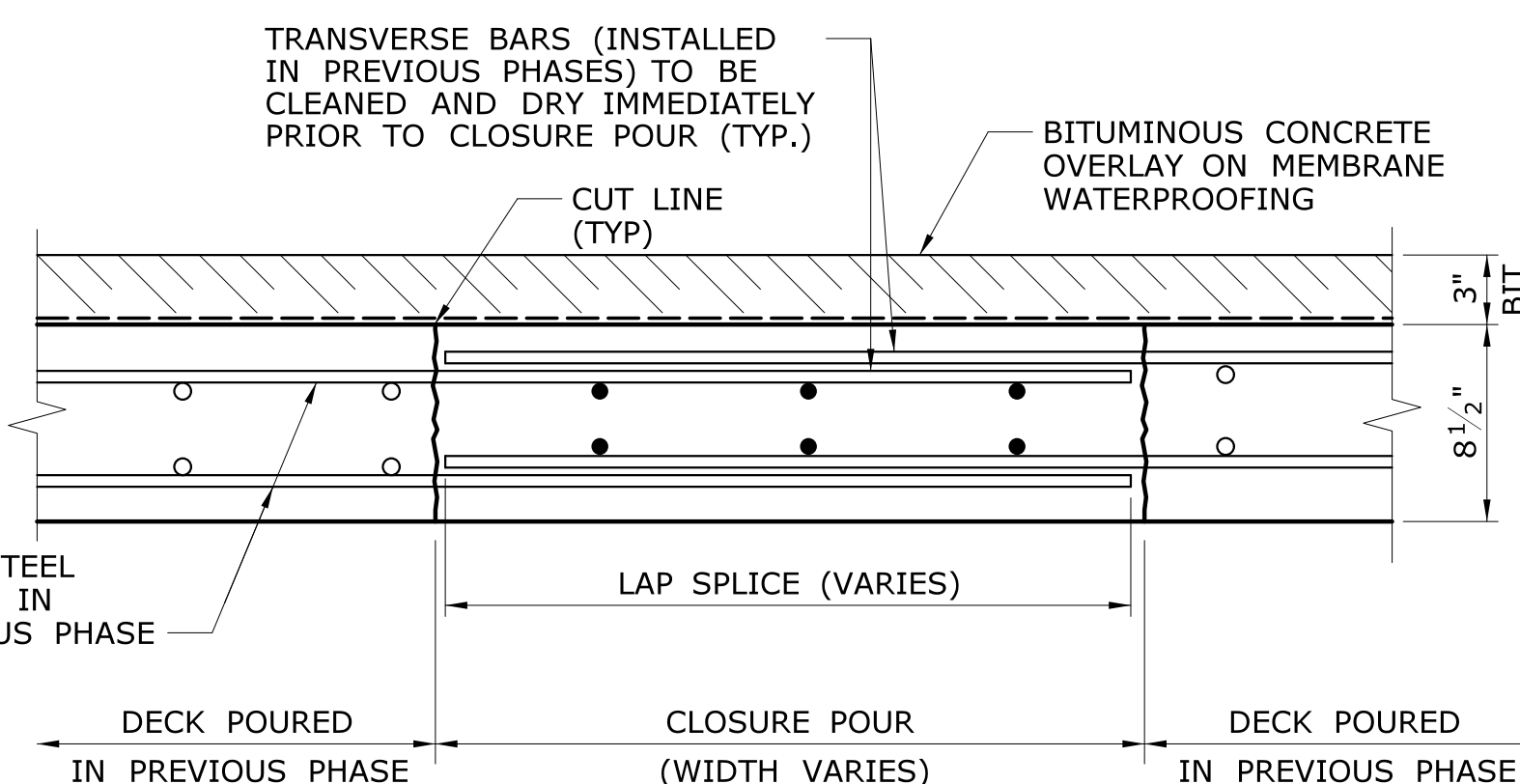


1" CLOSED CELL ELASTOMER BONDED TO TOP OF BACKWALL WITH A PRESSURE SENSITIVE ADHESIVE. PLACE SKIN SIDE OF ELASTOMER UPWARD.

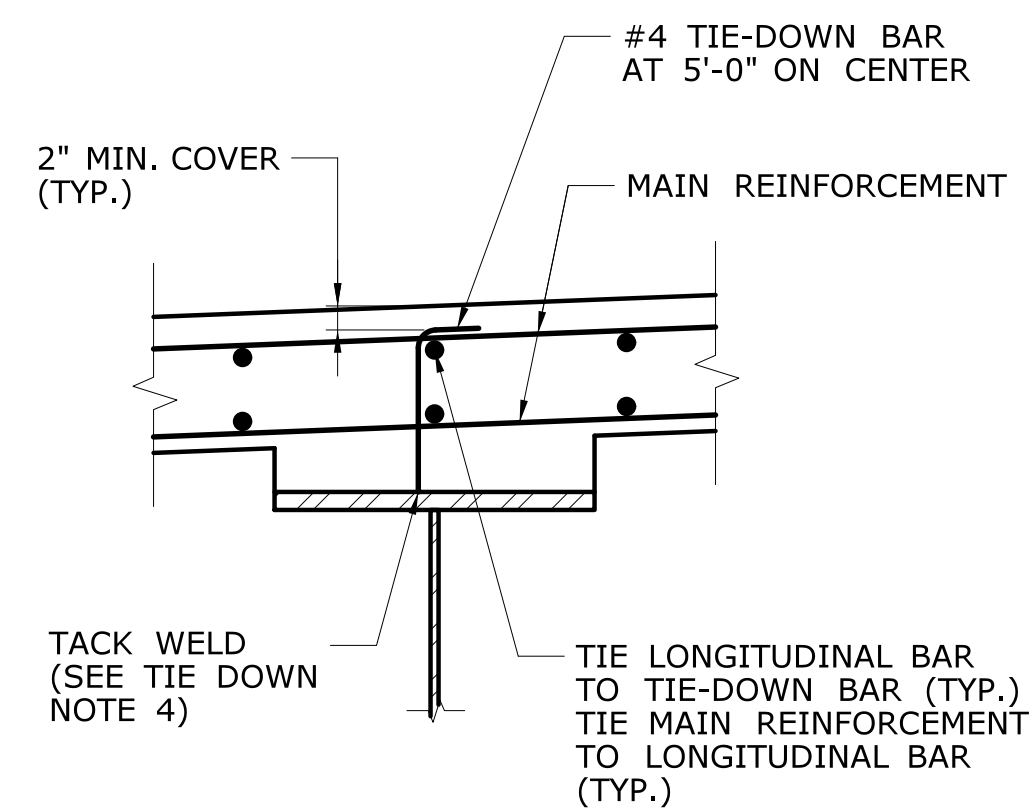
SECTION C

SCALE: 1" = 1'-0"



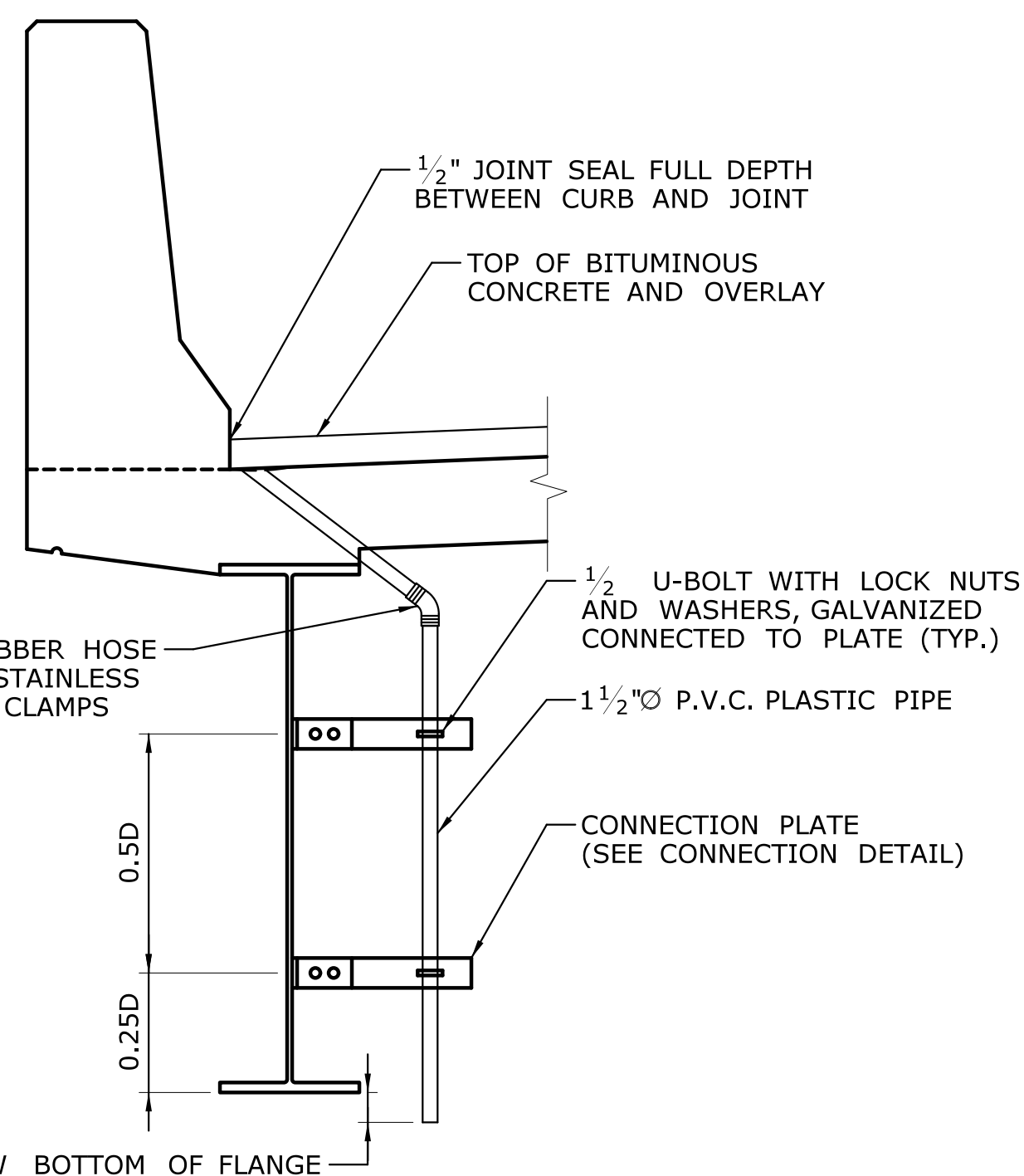
TYPICAL SECTION AT CLOSURE POUR

SCALE: 1 1/2" = 1'-0"



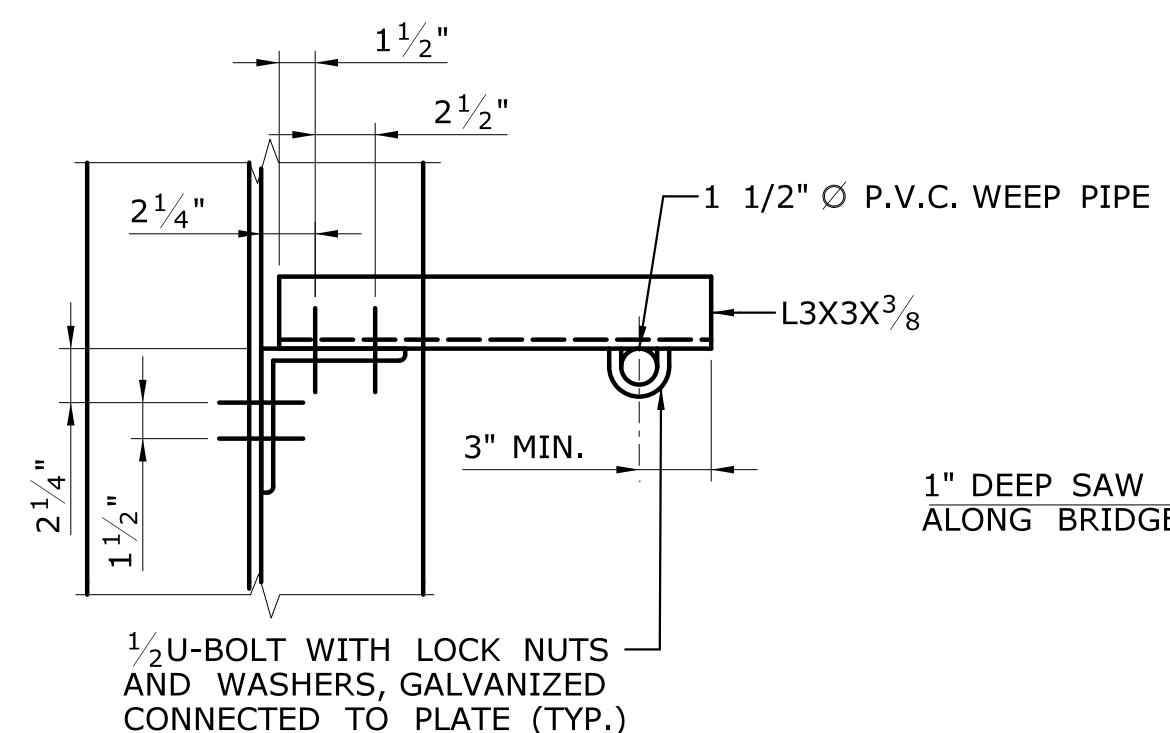
SLAB TIE-DOWN DETAIL

SCALE: 1" = 1'-0"



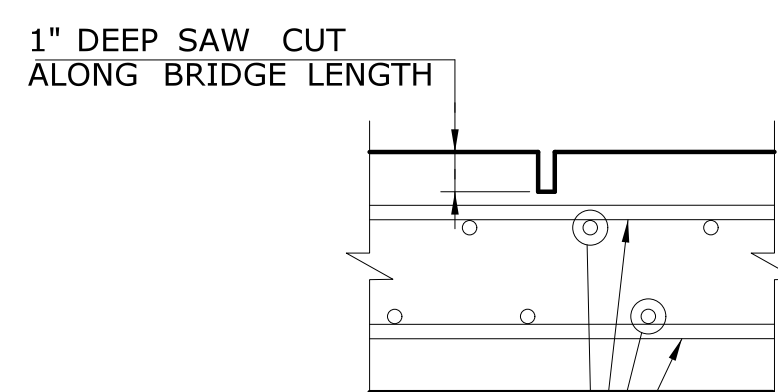
DECK WEEPHOLE DETAIL

SCALE: 3/4" = 1'-0"



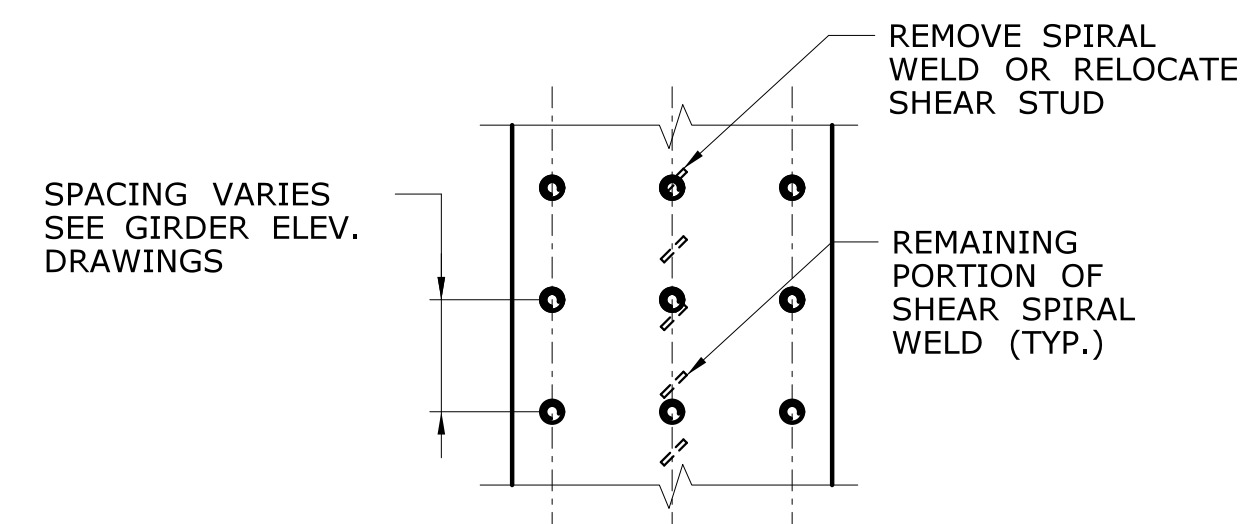
SECTION A

SCALE: 1 1/2" = 1'-0"



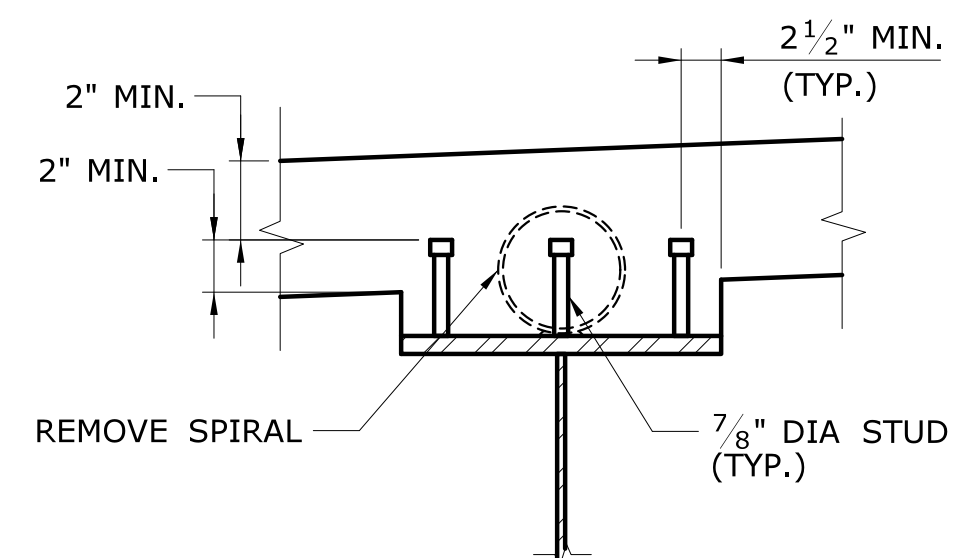
TOP OF DECK SAWCUT DETAIL

NOT TO SCALE



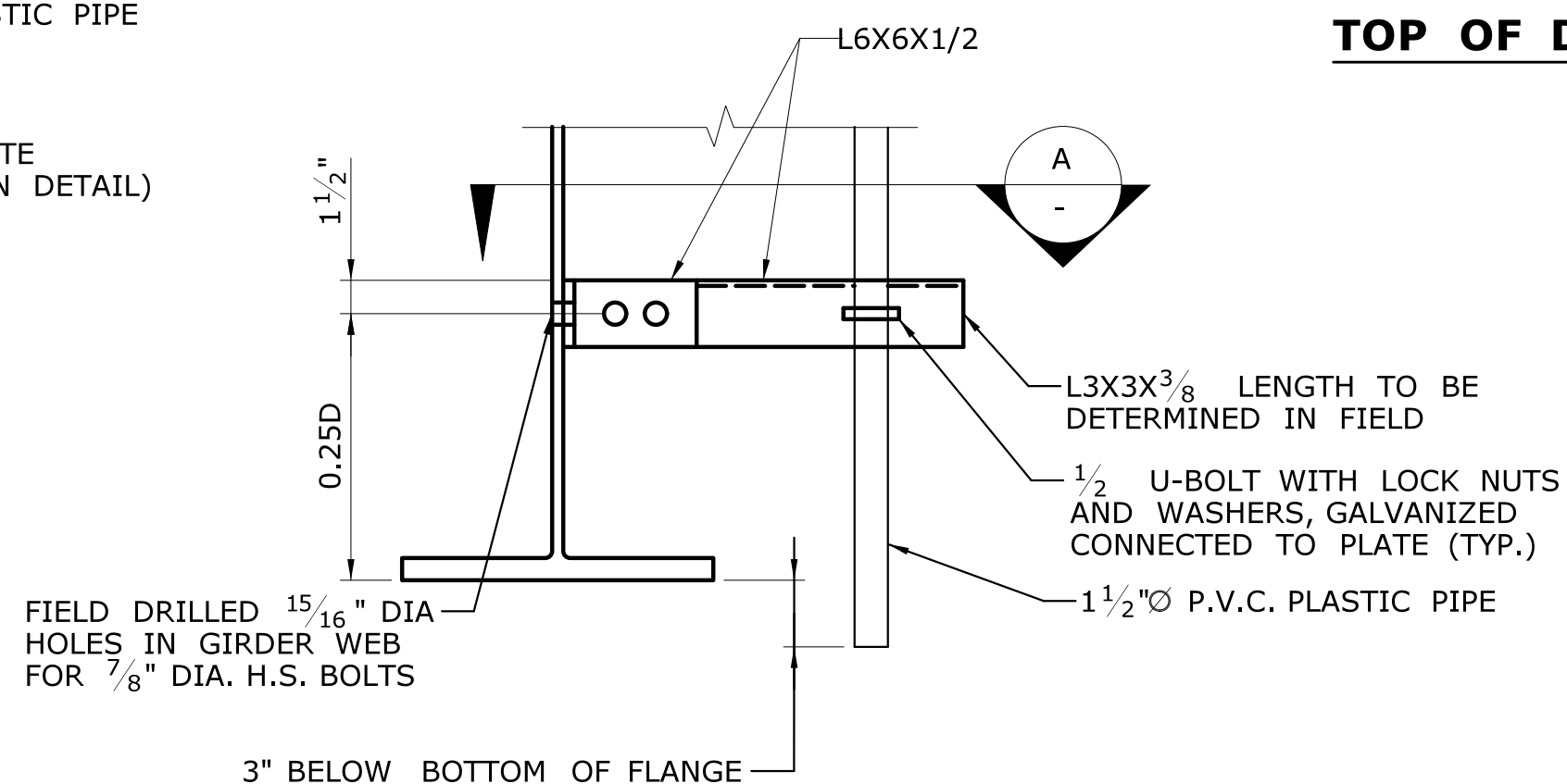
SHEAR CONNECTOR DETAILS

NOT TO SCALE



MECHANICAL COUPLER DETAIL

NOT TO SCALE



DECK WEEPHOLE CONNECTION DETAIL

SCALE: 1 1/2" = 1'-0"

TIE-DOWN NOTES:

1. TIE-DOWN BARS DO NOT EXCLUDE THE USE OF CHAIRS FOR SUPPORTING THE REINFORCEMENT MAT.
2. THE COST OF FURNISHING AND PLACING TIE-DOWN BARS IS TO BE INCLUDED IN THE CONTRACT ITEM "DEFORMED STEEL BARS - GALVANIZED."
3. TIE-DOWN BARS AND LONGITUDINAL BARS SHALL CLEAR SHEAR CONNECTORS.
4. FOR ALLOWABLE LIMITS OF WELDING TIE-DOWN BARS, SEE GIRDER ELEVATION DRAWINGS.

SHEAR CONNECTOR NOTES:

1. CONTRACTOR SHALL DETERMINE SHEAR CONNECTOR LENGTHS AFTER THE ERECTED BEAMS HAVE BEEN SURVEYED AND THE HAUNCH DEPTHS CALCULATED.
2. SHEAR CONNECTOR LENGTHS SHALL BE IN 1 INCH INCREMENTS.
3. MAXIMUM LENGTHS OF UNSTAKED SHEAR CONNECTORS SHALL BE 8 INCHES.
4. MINIMUM SHEAR CONNECTOR LENGTHS SHALL BE 4 INCHES.
5. MINIMUM HAUNCH SHALL BE 1 INCH; IF IT IS DETERMINED THAT THE MINIMUM HAUNCH CANNOT BE MAINTAINED, THE ENGINEER SHALL BE NOTIFIED IMMEDIATELY.
6. STACKED SHEAR CONNECTORS SHALL BE USED WHEN REQUIRED STUD LENGTH EXCEEDS 8 INCHES.
7. FOR SHEAR STUD SPACING AND QUANTITY SEE DRAWING NOS. S-10 & S-21.
8. REMOVE EXISTING SPIRAL SHEAR CONNECTOR ALONG THE ENTIRE LENGTH OF THE EXITING GIRDERS
9. IF THE REMAINING SPIRAL WELD INTERFERES WITH NEW STUD SHEAR CONNECTORS, THE CONTRACTOR SHALL EITHER REMOVE THE SPIRAL CONNECTION WELD BY GRINDING THE WELD SMOOTH, OR SHALL SHIFT THE NEW STUD SHEAR CONNECTORS TO CLEAR EXISTING WELDS WITHOUT EXCEEDING THE MAXIMUM STUD SPACING PERMITTED.
10. THE COST OF REMOVING EXISTING SPIRAL SHEAR CONNECTORS SHALL BE INCLUDED FOR PAYMENT UNDER THE ITEM "REMOVAL OF CONCRETE BRIDGE DECK (SITE NO. 1)" FOR BRIDGE 00377, AND UNDER THE ITEM "REMOVAL OF CONCRETE BRIDGE DECK (SITE NO. 2)" FOR BRIDGE 00381.

MECHANICAL COUPLER NOTES:

1. MECHANICAL COUPLERS SPLICES SHALL BE THREADED FOR CONNECTION OF THREADED REBAR IN THE BRIDGE DECK.
2. SEE DRAWING NOS. S-12, S-13, S-24, & S-25 FOR LOCATIONS AND QUANTITY OF MECHANICAL COUPLER SPLICES.
3. MECHANICAL COUPLER DIMENSIONS AND THREAD PITCH, SHALL BE PROPRIATRY AND APPROVED THROUGH A SHOP DRAWING SUBMISSION.
4. MECHANICAL COUPLERS SHALL BE PROTECTED IN STAGES WHERE ADJACENT EXISTING DECK DEMOLITION WORK IS BEIN PERFORMED.
5. THE COST OF MECHANICAL COUPLERS AND THREADED REINFORCING SHALL BE INCLUDED UNDER THE ITEMS "TEMPORARY BRIDGE (SITE NO. 1)" AND "TEMPORARY BRIDGE (SITE NO. 2)."

WEEP DRAIN NOTE:

WEEP DRAIN PIPE, CONNECTION HARDWARE, GALV. MESH, AND STEEL ANGLES TO BE PAID UNDER THE ITEM "CONSTRUCT WEEP DRAINS."

ADDENDUM NO. 2

12.18.20	PAY ITEM NOTE	05.34.A2	
DESIGNED BY: CDW SMITH 77 HARTLAND STREET SUITE 201 EAST HARTFORD, CT 06108			
THE INFORMATION, INCLUDING ESTIMATED QUANTITIES OF WORK, SHOWN ON THESE SHEETS IS BASED ON LIMITED INVESTIGATIONS BY THE STATE AND IS IN NO WAY WARRANTED TO INDICATE THE CONDITIONS OF ACTUAL QUANTITIES OF WORK WHICH WILL BE REQUIRED.			
REV.	DATE	REVISION DESCRIPTION	SHEET NO.
			Plotted Date: 12/18/2020

DESIGNER/DRAFTER:
ALH
 CHECKED BY:
MPE
 SCALE AS NOTED



SIGNATURE/
BLOCK:
 PROJECT TITLE:
RESURFACING, BRIDGE AND SAFETY IMPROVEMENTS ON ROUTE 2

TOWN:
TOWNS OF HARTFORD, EAST HARTFORD, WETHERSFIELD AND GLASTONBURY

PROJECT NO.
42-317
 DRAWING NO.
S-33
 SHEET NO.
05.34.A2