

GENERAL NOTES:

SPECIFICATIONS: CONNECTICUT DEPARTMENT OF TRANSPORTATION FORM 818 (DATED 2020) AND SPECIAL PROVISIONS.

DESIGN SPECIFICATIONS: AASHTO LRFD BRIDGE DESIGN SPECIFICATIONS FOR HIGHWAY BRIDGES (AASHTO-2017), WITH THE INTERIM SPECIFICATIONS UP TO AND INCLUDING CURRENT CHANGES DATED 12/2019, AS SUPPLEMENTED BY THE CONNECTICUT DEPARTMENT OF TRANSPORTATION BRIDGE DESIGN MANUAL (2003).

MATERIAL STRENGTHS:

CONCRETE:
 CLASS PCC03340 CONCRETE $f_c = 3,000$ PSI (MIN.)
 CLASS PCC04460 CONCRETE $f_c = 4,000$ PSI (MIN.)

THE SPECIFIED CONCRETE STRENGTH USED IN DESIGN, f_c , OF THE CONCRETE COMPONENTS IS NOTED ABOVE. THE MINIMUM COMPRESSIVE STRENGTH OF THE CONCRETE IN THE CONSTRUCTED COMPONENTS SHALL CONFORM TO THE REQUIREMENTS OF SECTION 6.01 - "CONCRETE FOR STRUCTURES" AND SECTION M.3 - "PORTLAND CEMENT CONCRETE".

LIVE LOAD: HL-93

BACKFILL: ALL BACKFILL SHALL BE LIGHTWEIGHT FILL MEETING THE REQUIREMENTS OF THE SPECIFICATIONS INCLUDING PLACEMENT LIMITATIONS AS INDICATED IN THE SPECIFICATIONS.

DIMENSIONS: ALL DIMENSIONS SHOWN ON THE PLANS ARE IN FEET AND INCHES EXCEPT IF NOTED OTHERWISE. ALL ELEVATIONS AND STATIONS ARE GIVEN IN FEET. WHEN DECIMAL DIMENSIONS ARE GIVEN TO LESS THAN THREE DECIMAL PLACES, THE OMITTED DIGITS SHALL BE ASSUMED TO BE ZEROS.

TRAFFIC: ALL WORK SHALL BE DONE IN ACCORDANCE WITH THE SPECIAL PROVISIONS "MAINTENANCE AND PROTECTION OF TRAFFIC" AND "SECTION 1.08 - PROSECUTION AND PROGRESS".

SEQUENCE OF CONSTRUCTION OPERATIONS: REFER TO THE MAINTENANCE AND PROTECTION OF TRAFFIC STAGING PLANS AND "SECTION 1.08 - PROSECUTION AND PROGRESS" SPECIFICATION FOR THE SEQUENCING OF CONSTRUCTION OPERATIONS.

ALLOWABLE WALL TYPES	C.I.P.	MODULAR	M.S.E.	TIE BACK
RETAINING WALL (SITE NO. 1)			X	

CONCRETE NOTES:

THE FOLLOWING CONCRETE CLASSES ARE REQUIRED FOR CAST-IN-PLACE BRIDGE COMPONENTS AND SHALL BE INCLUDED IN THE LUMP SUM COSTS FOR THE ITEM "RETAINING WALL (SITE NO. 1)":

ITEM	BRIDGE COMPONENTS	PCC CLASS
FOOTING CONCRETE	WALL FOOTINGS	PCC03340
PARAPET CONCRETE	WALL PARAPET, MOMENT SLAB	PCC04460

JOINT SEAL: SEE SPECIAL PROVISIONS.

EXPOSED EDGES: EXPOSED EDGES OF CONCRETE SHALL BE BEVELED 1" X 1" UNLESS DIMENSIONED OTHERWISE.

CONCRETE COVER: ALL REINFORCEMENT SHALL HAVE TWO INCHES COVER UNLESS DIMENSIONED OTHERWISE.

REINFORCEMENT: ALL REINFORCEMENT SHALL BE ASTM A615 GRADE 60.

GALVANIZED REINFORCING BARS: ALL REINFORCEMENT IN THE SUPERSTRUCTURE INCLUDING THE CONCRETE MOMENT SLAB AND THE PARAPETS SHALL BE GALVANIZED AFTER FABRICATION TO THE REQUIREMENTS OF ASTM A767, CLASS 1, INCLUDING SUPPLEMENTAL REQUIREMENTS. THE COST OF FURNISHING AND PLACING THIS REINFORCEMENT SHALL BE INCLUDED IN THE PAY ITEM FOR "RETAINING WALL (SITE NO. 1)".

PREFORMED EXPANSION JOINT FILLER: THE COST OF FURNISHING AND INSTALLING PREFORMED EXPANSION JOINT FILLER SHALL BE INCLUDED IN THE LUMP SUM COST OF THE ITEM "RETAINING WALL (SITE NO. 1)".

CONSTRUCTION JOINTS: CONSTRUCTION JOINTS, OTHER THAN THOSE SHOWN ON THE PLANS, WILL NOT BE PERMITTED WITHOUT THE PRIOR APPROVAL OF THE ENGINEER.

PLAN NOTES:

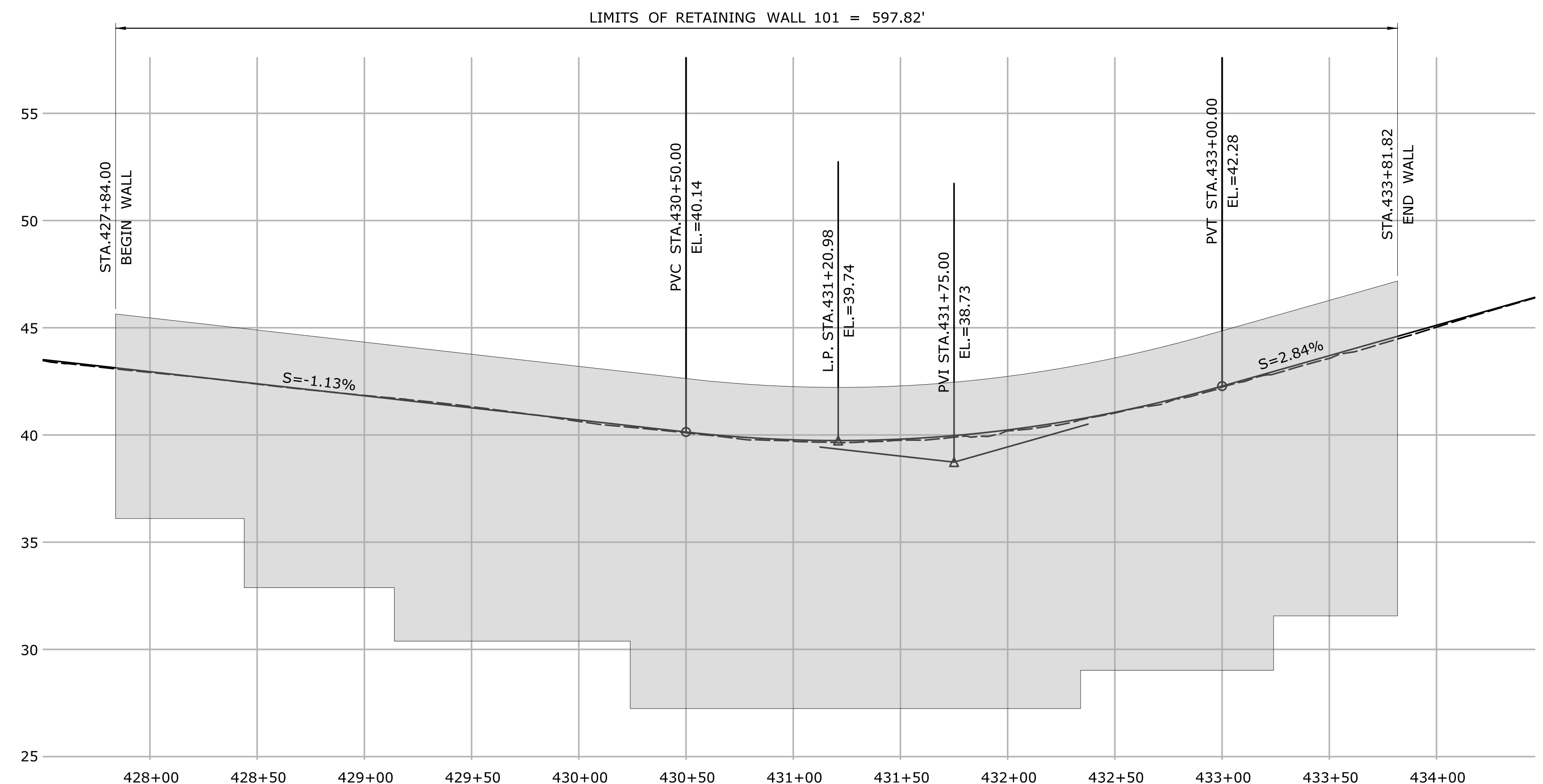
- WORK ZONES SHOWN REPRESENT DAYTIME OPERATION CONDITIONS DURING STAGE 1 - PHASE 1 OR MPT. SEE DRAWINGS MPT-01 TO MPT-05 FOR ALL DAY AND NIGHT MPT TYPICAL SECTION.
- THE CONTRACTOR SHALL SELECT, DESIGN AND CONSTRUCT ONE OF THE FOLLOWING WALL OPTIONS IN ACCORDANCE WITH THE SPECIAL PROVISION "RETAINING WALL (SITE NO. 1)".
 - A. REINFORCED EARTH WALLS
 THE REINFORCED EARTH COMPANY
 133 PARK STREET
 NORTH READING, MA 01864
 (978) 764-7315
 - B. RETAINED EARTH
 THE REINFORCED EARTH COMPANY
 1372 OLDBRIDGE ROAD, SUITE 101
 WOODBRIDGE, VA 22192
 (703) 499-9818
- THE MAXIMUM ALLOWABLE BEARING PRESSURE = 1.5 TSF.
- TEMPORARY EARTH RETAINING SYSTEM BELOW PAY LIMITS AND ANY TIEBACKS AND BRACING ASSOCIATED WITH SAME SHALL BE INCLUDED IN THE LUMP SUM COST OF THE WALL.
- DETAILS SHOWN IN THIS SET ARE NOT SPECIFIC. THE CONTRACTOR'S DESIGNER SHALL MODIFY EACH SECTION FOR EACH SPECIFIC SITE.
- LIGHT STANDARD ANCHORAGES, JUNCTION BOXES, AND RIGID METAL CONDUIT SHALL BE INCLUDED IN THE LUMP SUM PAY ITEM "RETAINING WALL (SITE NO. 1)".
- THE DETAILING AND REINFORCEMENT OF THE PARAPET SECTION ABOVE THE GUTTERLINE SHALL BE AS DETAILED ON DRAWING NOS. RW-06 THROUGH RW-09.
- ALL DIMENSIONS ARE SPECIFIED WITH THE APPLICABLE UNITS OF MEASUREMENT.
- ANY ADDITIONAL PERVIOUS STRUCTURE BACKFILL REQUIRED OUTSIDE THIS LIMIT SHALL ALSO BE INCLUDED IN THE LUMP SUM PRICE.
- ALL FACES OF THE 42-INCH F-SHAPE CONCRETE PARAPET SHALL RECEIVE A PENETRATING PROTECTIVE SEALANT COMPOUND APPLICATION. THE PENETRATING PROTECTIVE SEALANT COMPOUND SHALL BE INCLUDED IN THE LUMP SUM PRICE.

SCOPE OF WORK:

- INSTALL TEMPORARY EARTH RETAINING SYSTEM. MAINTAIN A MINIMUM 5 FOOT BUFFER FROM WETLANDS.
- PLACE GRANULAR FILL BASE COURSE AND CONCRETE LEVELING PADS.
- CONSTRUCT RETAINING WALL USING LIGHTWEIGHT FILL AND SOIL REINFORCEMENT.
- CONSTRUCT 42" F-SHAPE PARAPET, AND APPLY PENETRATING PROTECTIVE SEALANT COMPOUND TO ALL FACES OF THE NEWLY CONSTRUCTED PARAPET.
- REMOVE TEMPORARY EARTH RETAINING SYSTEM.
- FINISH GRADE ALONG FRONT FACE OF RETAINING WALL.
- INSTALL PAVEMENT ALONG FRONT FACE OF PARAPET.

STRUCTURE QUANTITIES		
ITEM DESCRIPTION	UNIT	QUANTITY
RETAINING WALL (SITE NO. 1)	L.S.	1

DESIGNED BY:
 CDM SMITH
 77 HARTLAND STREET
 SUITE 201
 EAST HARTFORD, CT 06108



PROFILE ROUTE 2 EASTBOUND

VERTICAL SCALE: 1" = 5'
 HORIZONTAL SCALE: 1" = 50'

ADDENDUM NO. 2

12.18.20 ADDRESS AND PHONE NUMBER 07.02.A2 THE INFORMATION, INCLUDING ESTIMATED QUANTITIES OF WORK, SHOWN ON THESE SHEETS IS BASED ON LIMITED INVESTIGATIONS BY THE STATE AND IS IN NO WAY WARRANTED TO INDICATE THE CONDITIONS OF ACTUAL QUANTITIES OF WORK WHICH WILL BE REQUIRED.	DESIGNER/DRAFTER: JCF	STATE OF CONNECTICUT DEPARTMENT OF TRANSPORTATION	SIGNATURE/ BLOCK:	PROJECT TITLE: RESURFACING, BRIDGE AND SAFETY IMPROVEMENTS ON ROUTE 2	TOWN: TOWN OF EAST HARTFORD	PROJECT NO. 42-317
	CHECKED BY: MPE					
REV. DATE REVISION DESCRIPTION SHEET NO. Plotted Date: 12/17/2020	SCALE AS NOTED	Filename: ...\\SB_MSH_0042_0317_RW-01_A.2.dgn	PROFESSIONAL ENGINEER No. 17418 LICENSED	SHEET NO. 07.02.A2	DRAWING TITLE: RETAINING WALL GENERAL NOTES	SHEET NO. 07.02.A2