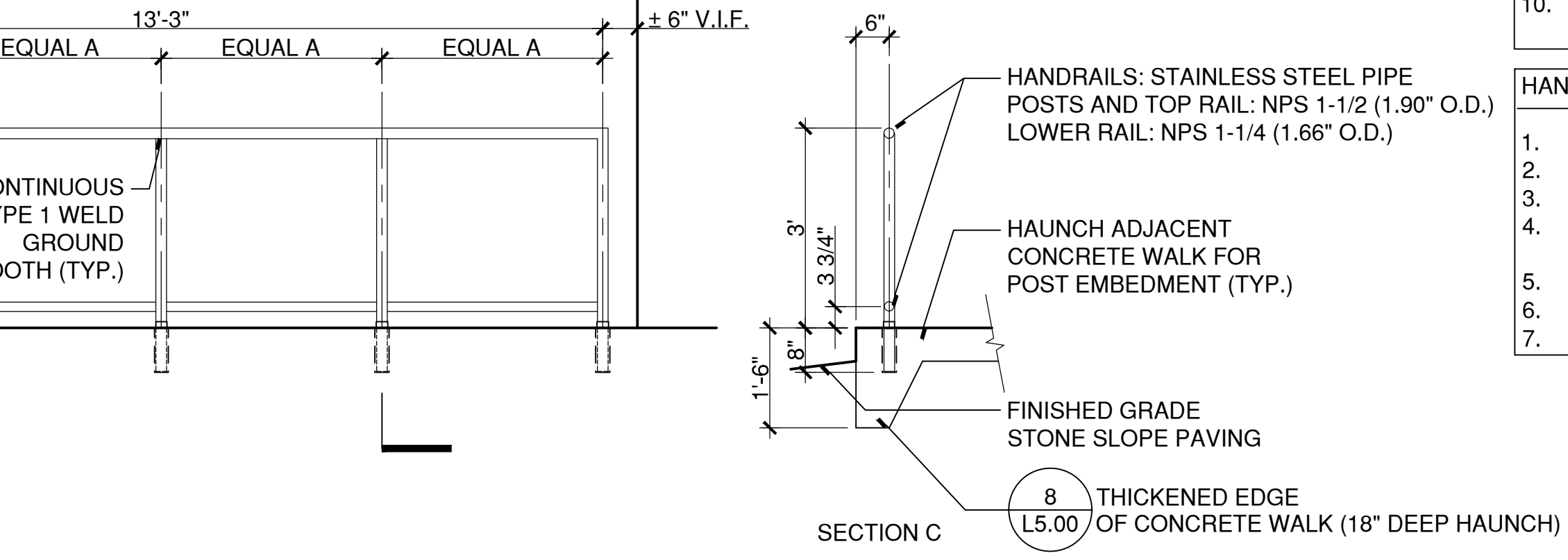
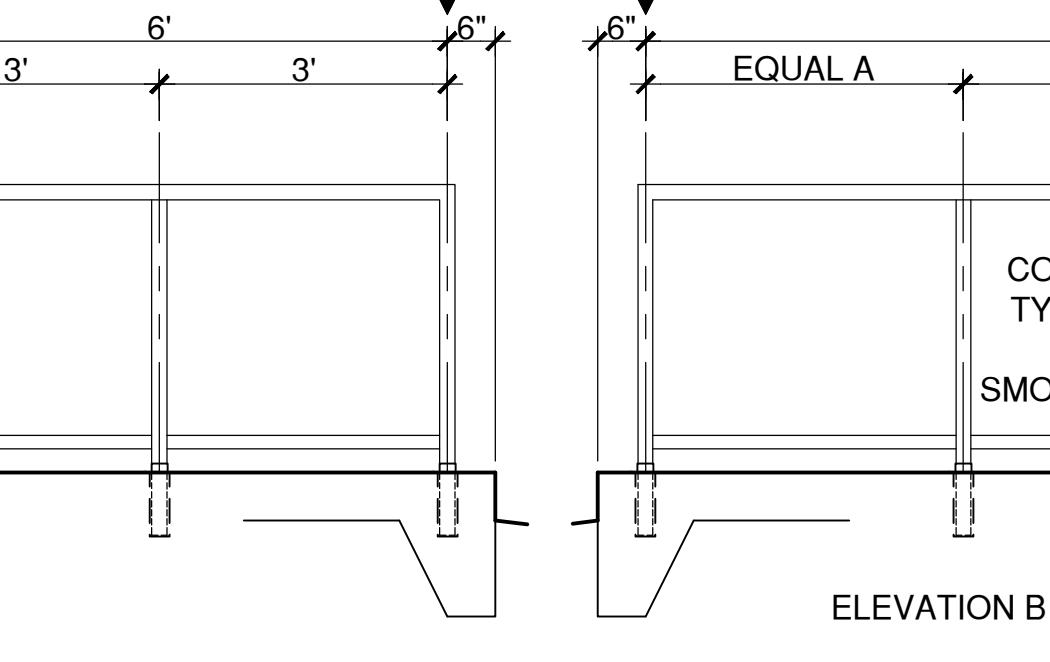
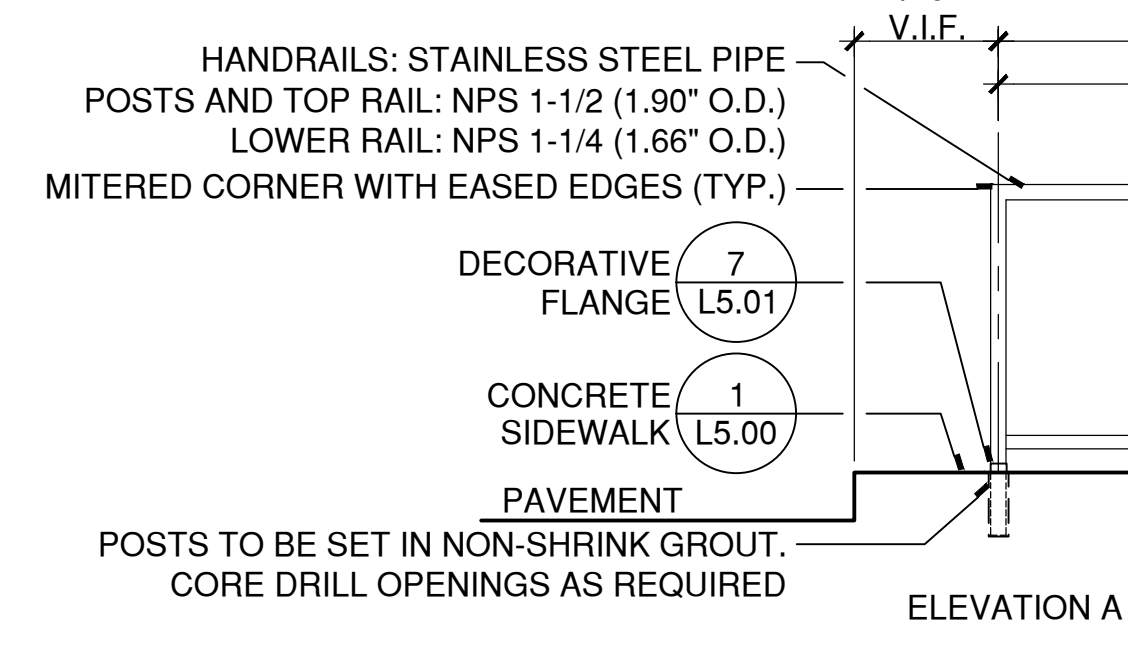
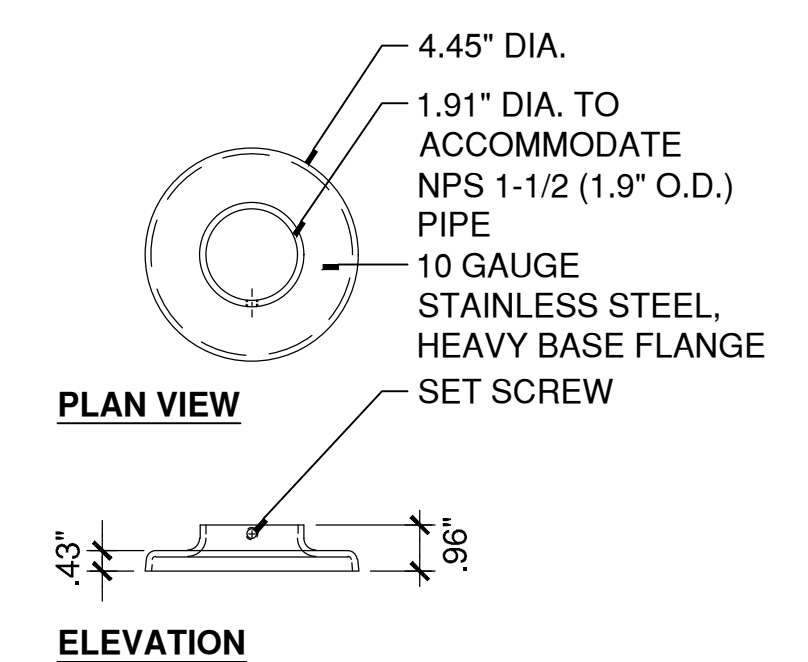


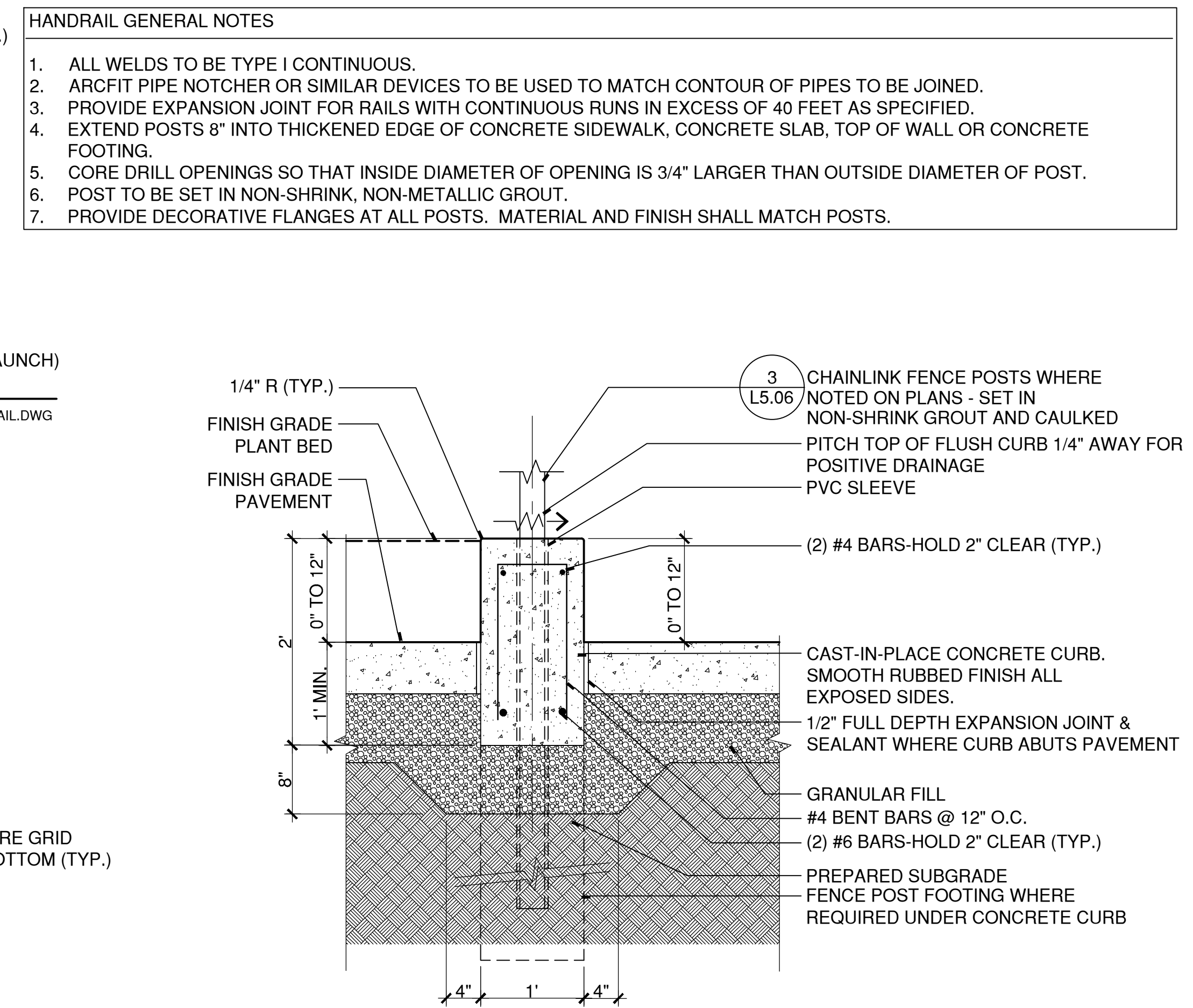
- CONCRETE GENERAL NOTES**
1. REINFORCING, REINFORCING ACCESSORIES AND DOWELS FOR ALL EXTERIOR CONCRETE INCLUDING BUT NOT LIMITED TO SIDEWALKS, PAVEMENT, PADS AND SITE WALLS SHALL BE EPOXY COATED.
 2. PROVIDE CLEARANCE FROM EDGE OF REINFORCING TO EDGE OF CONCRETE AS NOTED ON STRUCTURAL DRAWINGS (\$0.00, CONCRETE, ITEM 21) UNLESS NOTED OTHERWISE.
 3. BASE AND BACKFILL REQUIREMENTS SHALL COMPLY WITH RECOMMENDATIONS IN PROJECT GEOTECHNICAL REPORT.
 4. BACKFILL EVENLY BOTH SIDES OF WALLS.
 5. SIDEWALKS, PAVEMENTS AND RAMPS: APPLY BROOM FINISH PERPENDICULAR TO MAIN TRAFFIC ROUTE, OR AS INDICATED ON JOINT LAYOUT PLANS. TOOL EDGES OF PAVING AND ALL JOINTS WITH EDGING TOOL TO A 1/4" RADIUS AFTER INITIAL FLOATING AND REPEAT AFTER APPLYING BROOM FINISH. ELIMINATE EDGING TOOL MARKS ON CONCRETE SURFACES.
 6. STEPS: APPLY BROOM FINISH PERPENDICULAR TO MAIN TRAFFIC ROUTE WITH 1 1/2" WIDE SMOOTH TROWELED EDGE AT NOSING. PROVIDE SMOOTH RUBBED FINISH ON VERTICAL FACES.
 7. WALLS, SEAT STEPS, AND CURBS: PROVIDE SMOOTH RUBBED FINISH ON ALL EXPOSED VERTICAL SIDES AND TOPS. CONTINUE RUBBED FINISH A MINIMUM OF 6" BELOW FINISH GRADE. INCORPORATE REQUIRED JOINTS INTO REVEAL PATTERN.
 8. CONTRACTOR SHALL SUBMIT SHOP DRAWINGS FOR REVIEW AND APPROVAL INDICATING JOINT LOCATIONS, FINISHES AND REVEAL PATTERNS.
 9. WHERE SUBSURFACE PIPING PASSES THROUGH WALLS, SEAT STEPS OR OTHER STRUCTURES, REFER TO TYPICAL DETAIL OF PIPE PENETRATIONS THRU FOUNDATION WALLS (\$6.00). COORDINATE ALL INVERTS WITH CIVIL AND UTILITY DRAWINGS.
 10. REFER TO CAST-IN-PLACE CONCRETE AND CONCRETE PAVING SPECIFICATIONS FOR ADDITIONAL REQUIREMENTS AND INFORMATION.

- HANDRAIL GENERAL NOTES**
1. ALL WELDS TO BE TYPE I CONTINUOUS.
 2. ARCUT PIPE NOTCHER OR SIMILAR DEVICES TO BE USED TO MATCH CONTOUR OF PIPES TO BE JOINED.
 3. PROVIDE EXPANSION JOINT FOR RAILS WITH CONTINUOUS RUNS IN EXCESS OF 40 FEET AS SPECIFIED.
 4. EXTEND POSTS 8" INTO THICKENED EDGE OF CONCRETE SIDEWALK, CONCRETE SLAB, TOP OF WALL OR CONCRETE FOOTING.
 5. CORE DRILL OPENINGS SO THAT INSIDE DIAMETER OF OPENING IS 3/4" LARGER THAN OUTSIDE DIAMETER OF POST.
 6. POST TO BE SET IN NON-SHRINK, NON-METALLIC GROUT.
 7. PROVIDE DECORATIVE FLANGES AT ALL POSTS. MATERIAL AND FINISH SHALL MATCH POSTS.

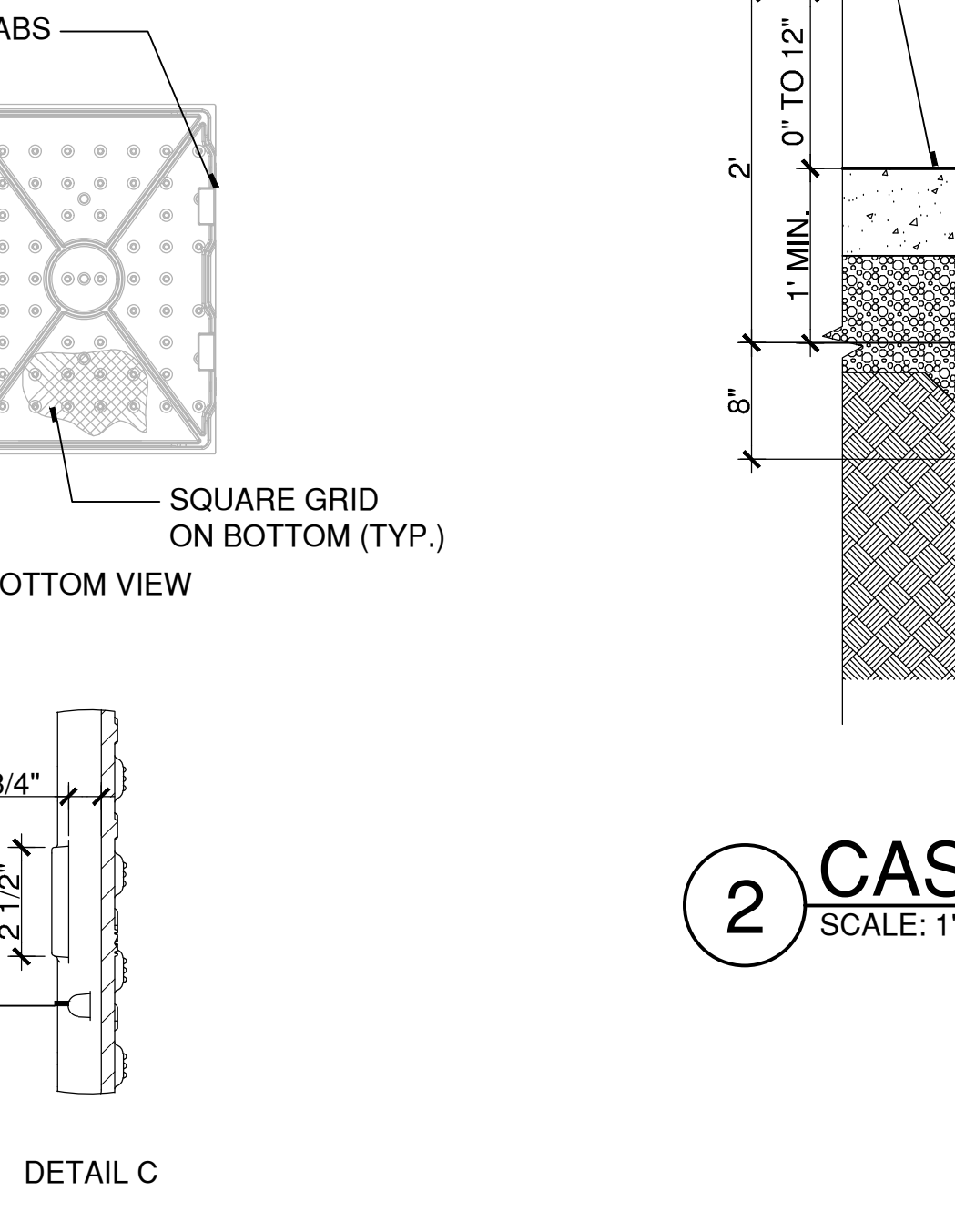
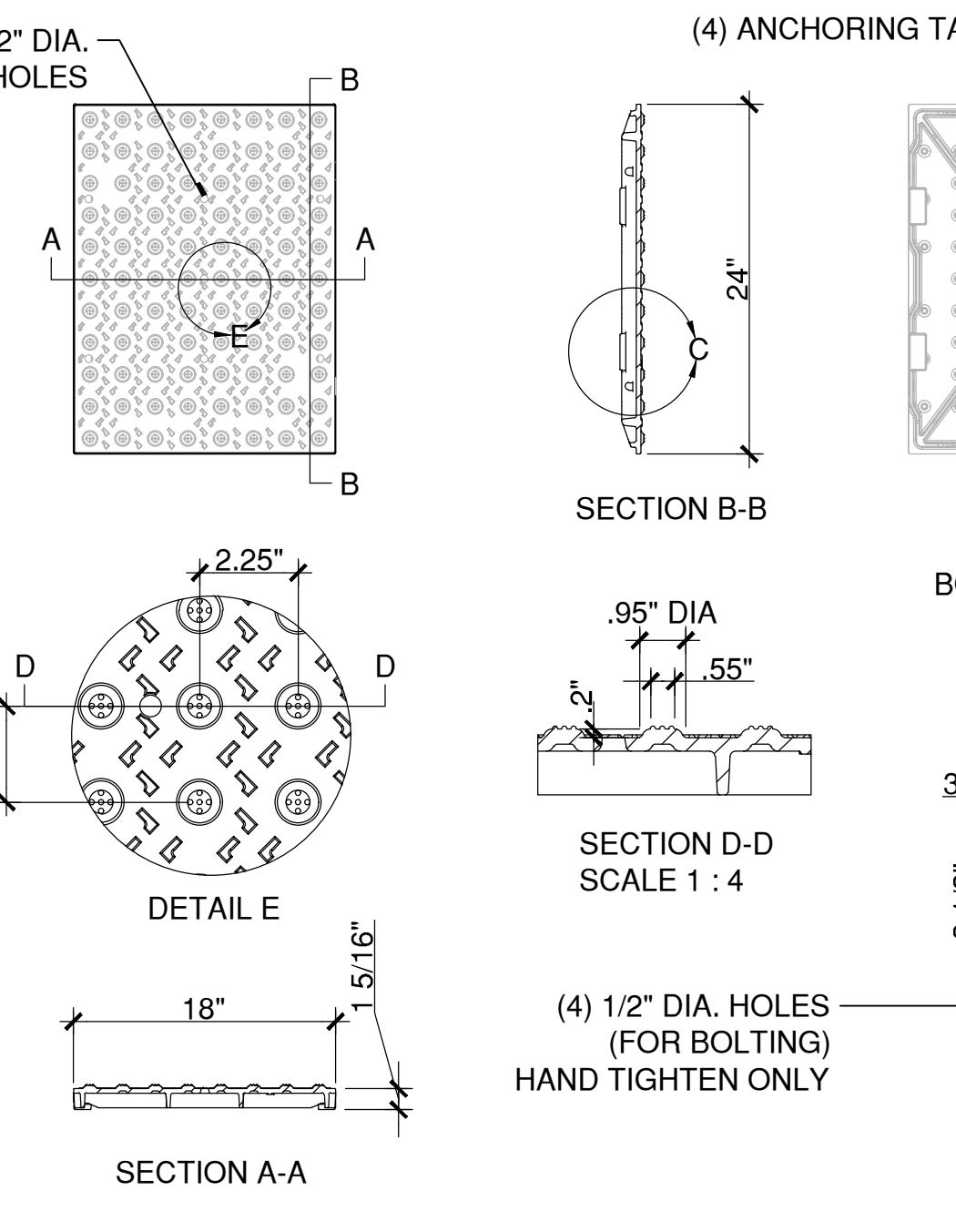
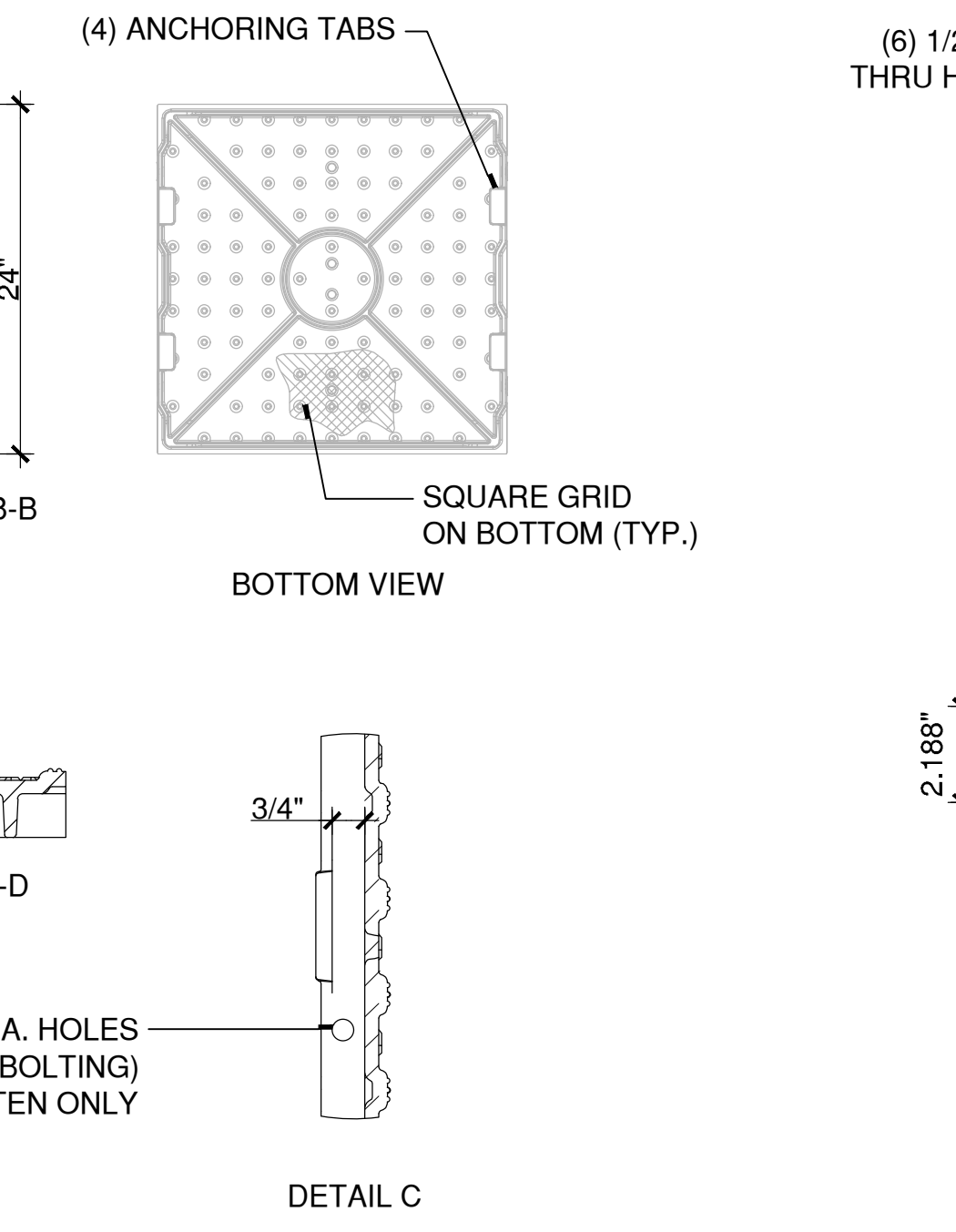
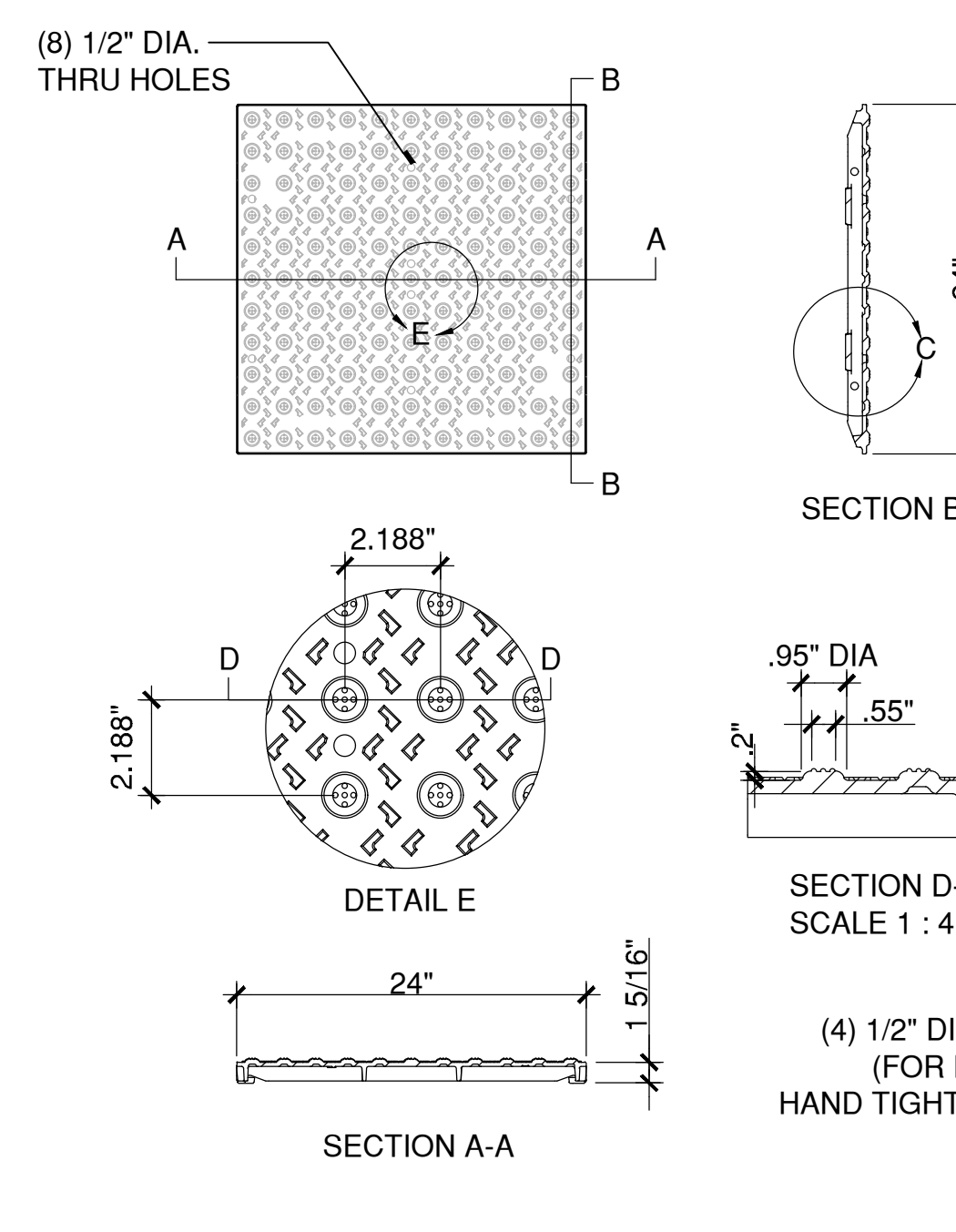
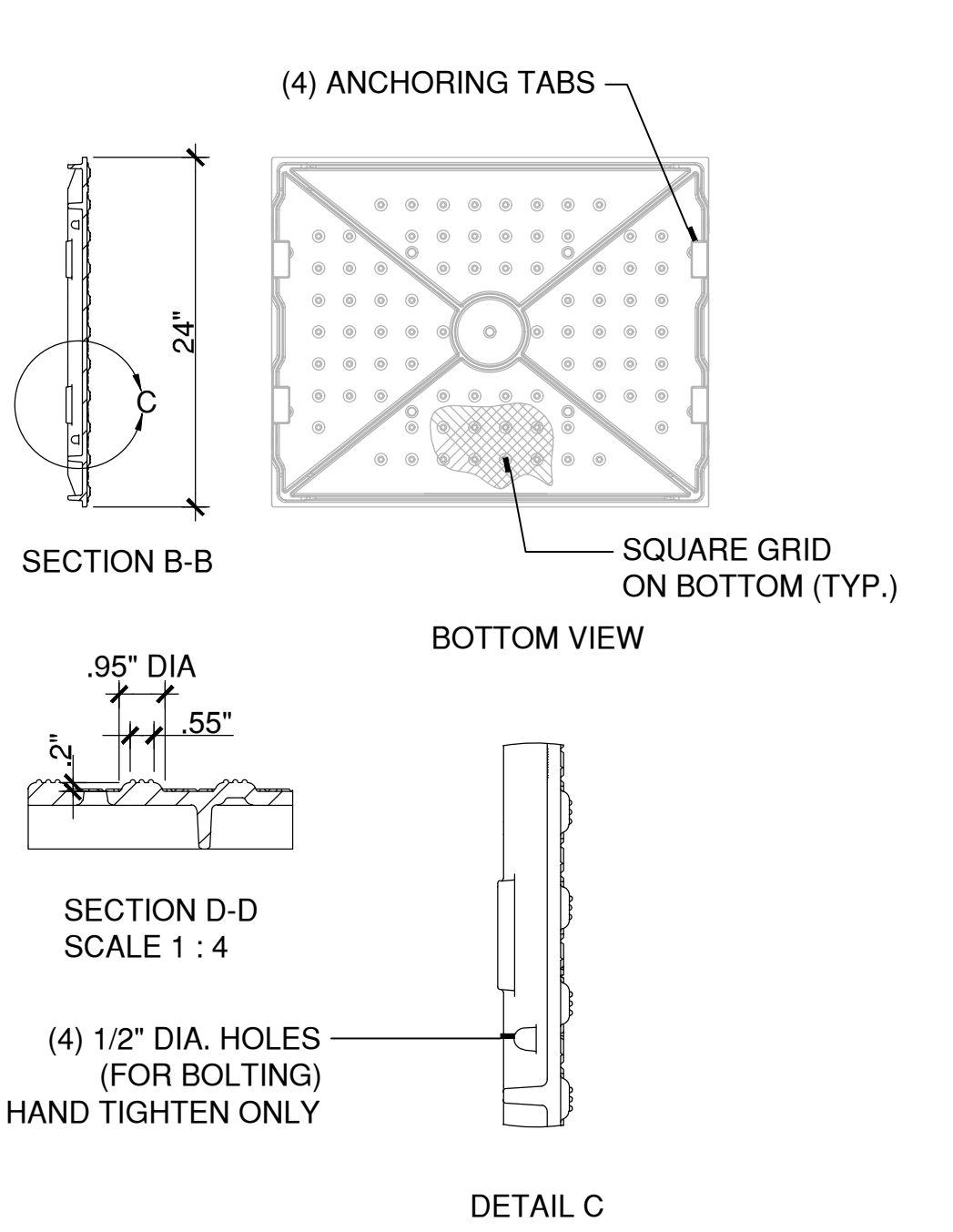
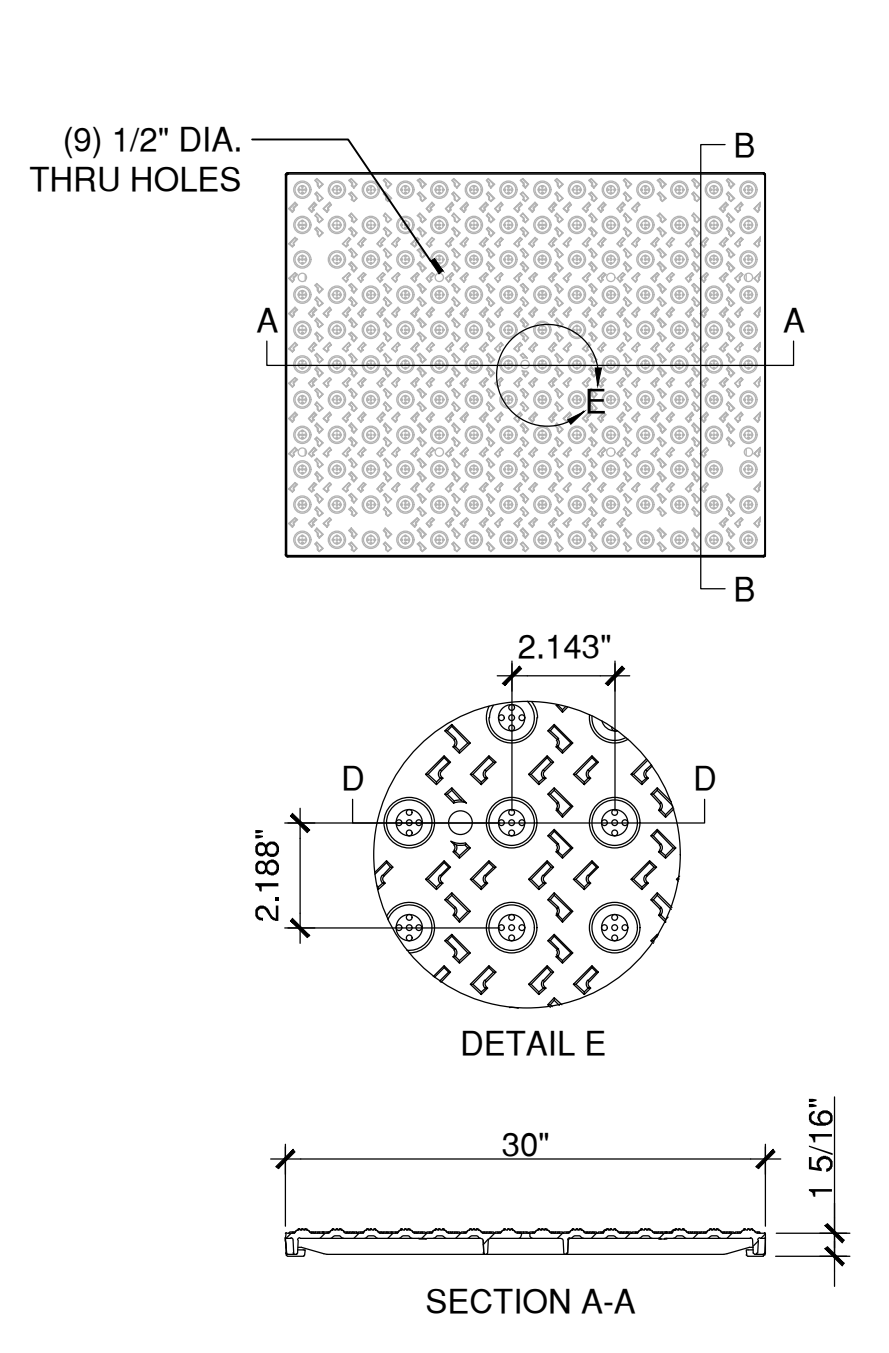


7 DECORATIVE FLANGE
SCALE: 3\"/>

6 BUS SHELTER RAIL
SCALE: 1/2\"/>



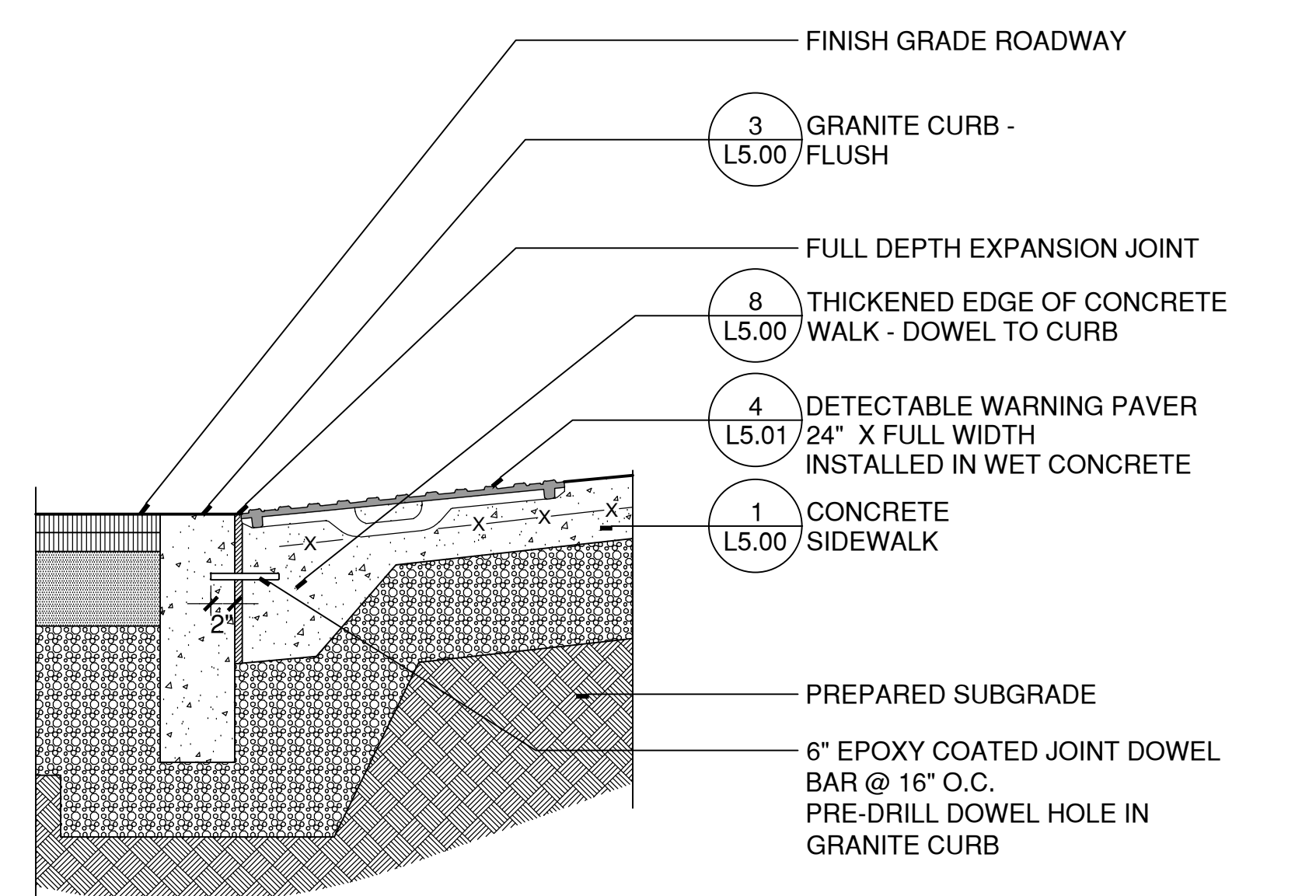
2 CAST-IN-PLACE CONCRETE CURB
SCALE: 1\"/>



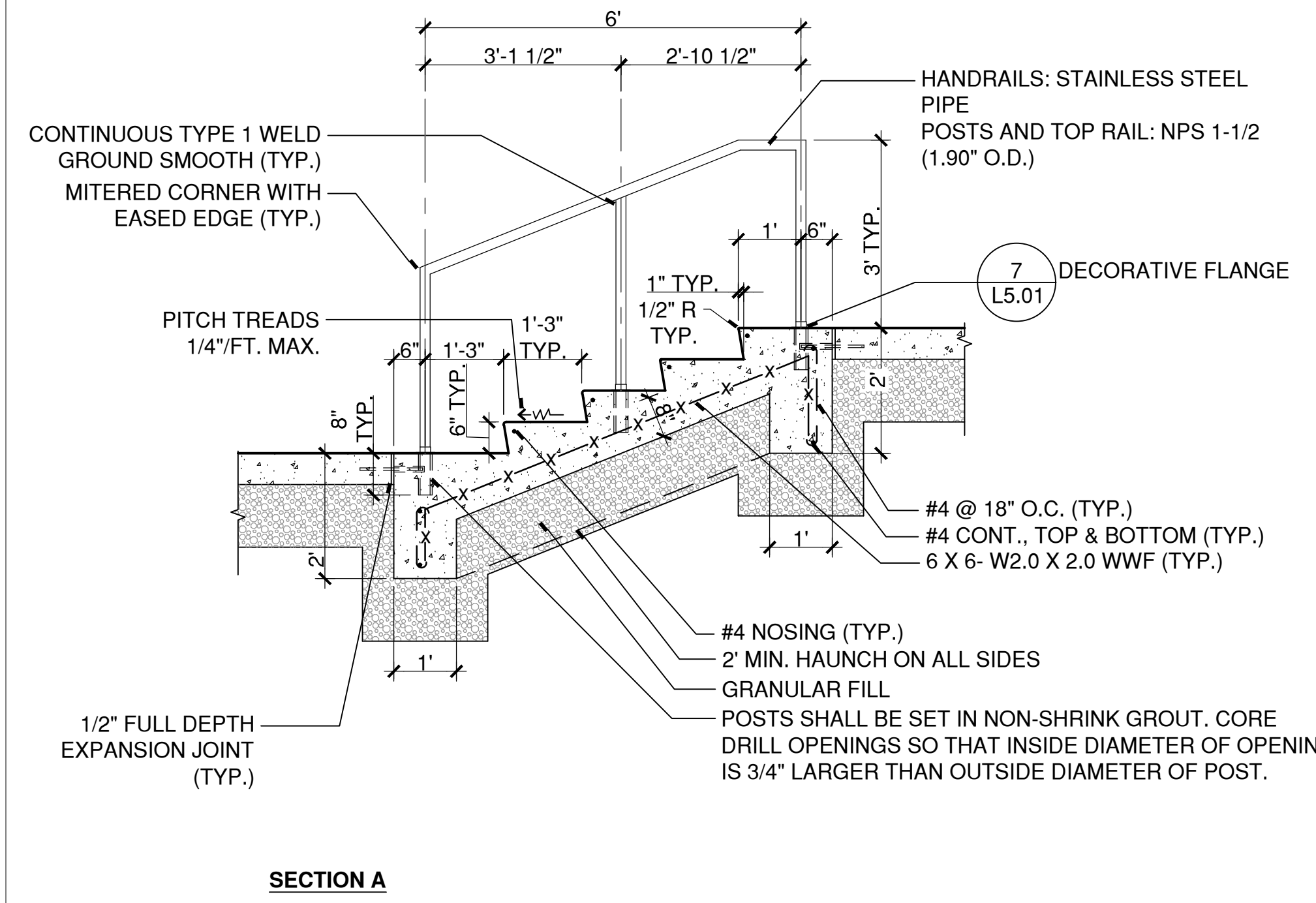
4 DETECTABLE WARNING PAVER
SCALE: 1\"/>

- NOTES:
1. INSTALLATION TO BE COMPLETED IN ACCORDANCE WITH MANUFACTURER'S SPECIFICATIONS.
2. DO NOT SCALE DRAWINGS.

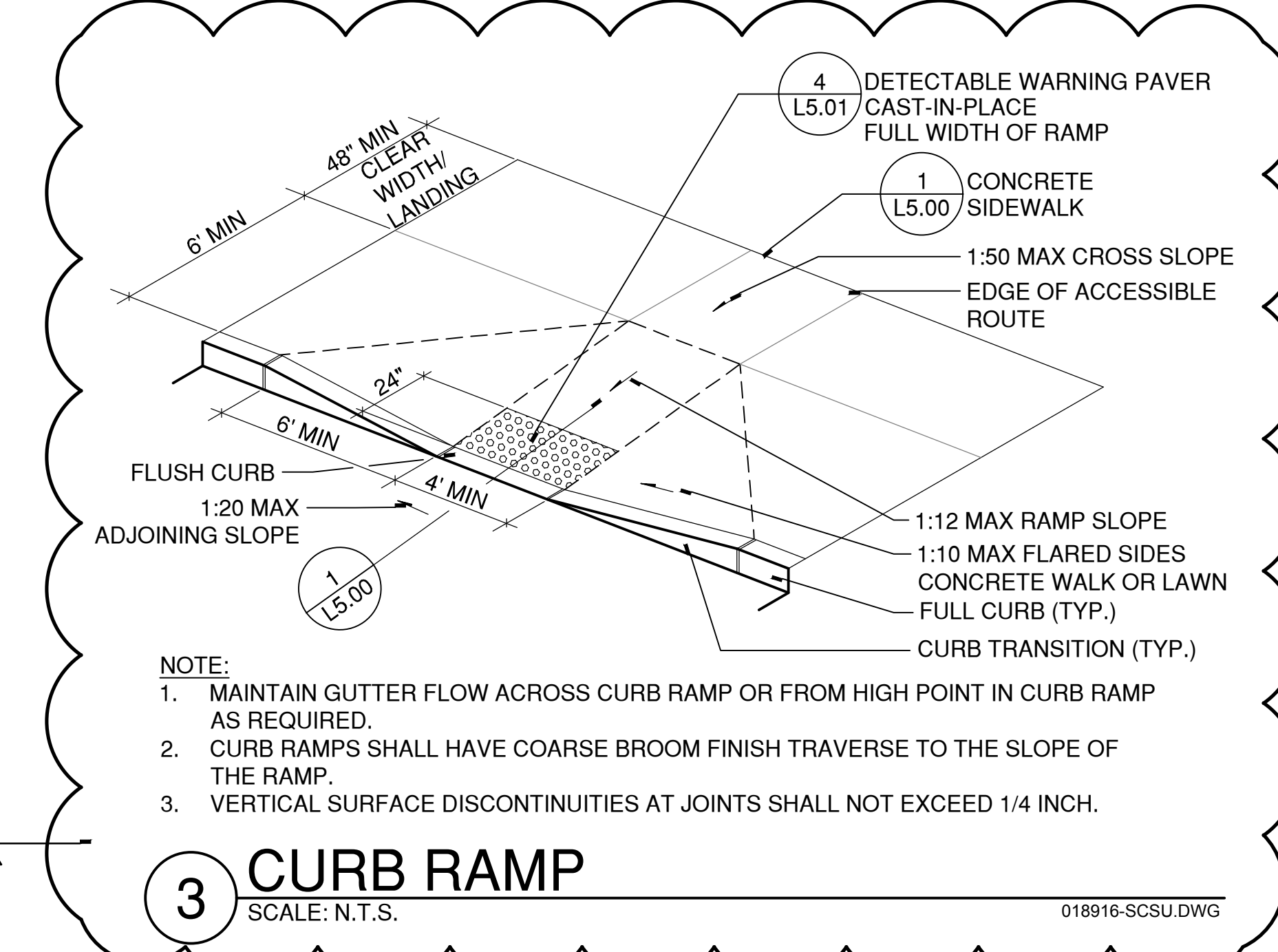
W:\20160114\CONDOCC\DETAILS\DETECTABLE WARNING PAVER.DWG



1 DETECTABLE WARNING PAVER AT CONCRETE CURB RAMP
SCALE: 1\"/>



5 QUAD STEPS
SCALE: 1/2\"/>



3 CURB RAMP
SCALE: N.T.S.

- NOTE:
1. MAINTAIN GUTTER FLOW ACROSS CURB RAMP OR FROM HIGH POINT IN CURB RAMP AS REQUIRED.
2. CURB RAMPS SHALL HAVE COARSE BROOM FINISH TRAVERSE TO THE SLOPE OF THE RAMP.
3. VERTICAL SURFACE DISCONTINUITIES AT JOINTS SHALL NOT EXCEED 1/4 INCH.

drawing title		REVISIONS		drawing prepared by		date	
SITE DETAILS		mark	date	RICHTER & CEGAN INC.		08/16/2019	
professional seal		01	08/16/2019	8-B Canal Court, Box 567, Avon, CT 06001		scale	
		02	08/16/2019	ADDENDUM 2		As Noted	
				project		approved by	
				SCSU NEW HHS BUILDING		WCR	
				501 CRESCENT STREET		drawing no.	
				NEW HAVEN, CT 06050		L5.01	
CAD no.		project no.		sheet no.		drawing no.	
		BI-RS-329					

W:\20160114\CONDOCC\Details\160111-501.dwg September 18, 2019 - 10:59 AM