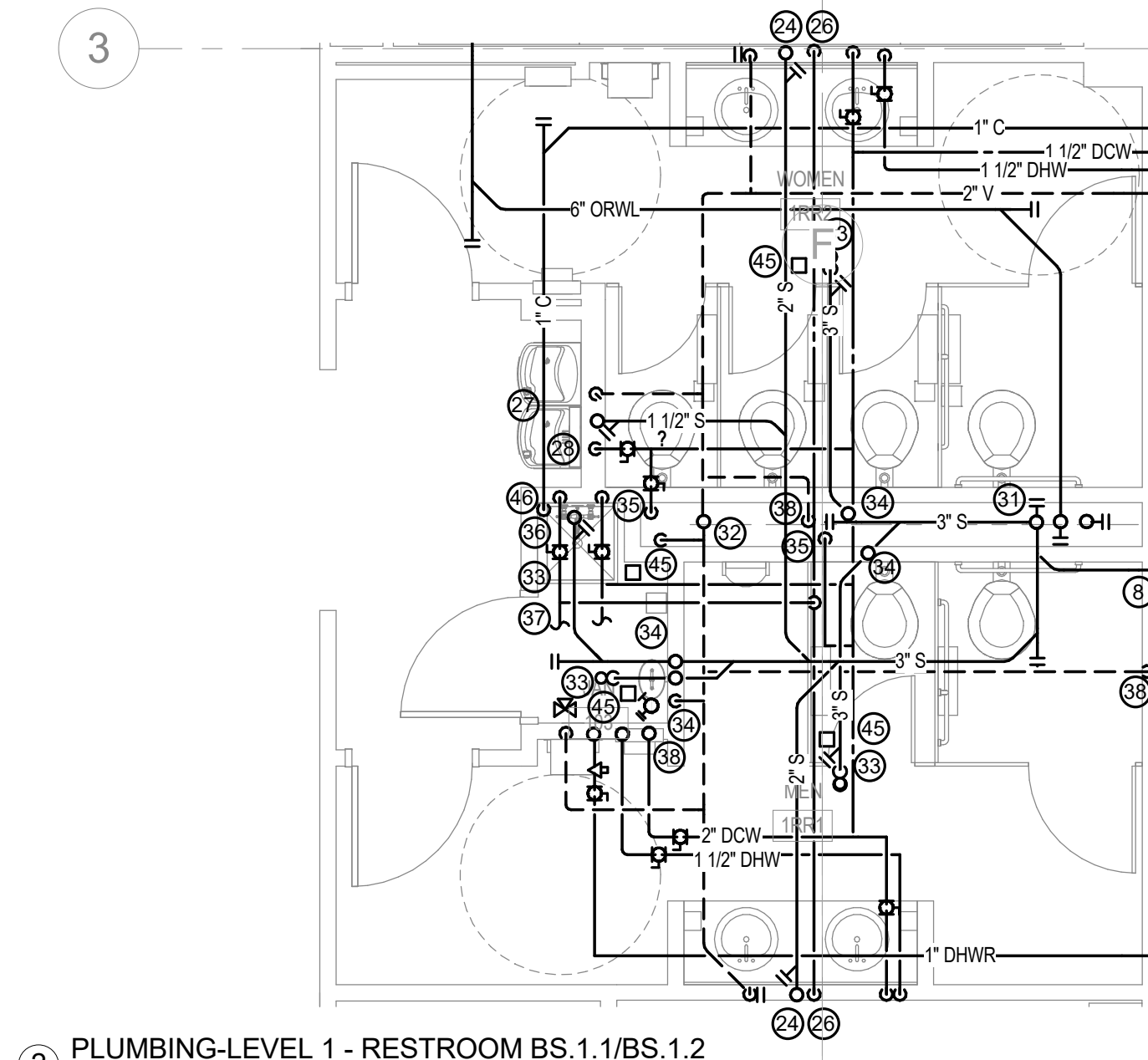
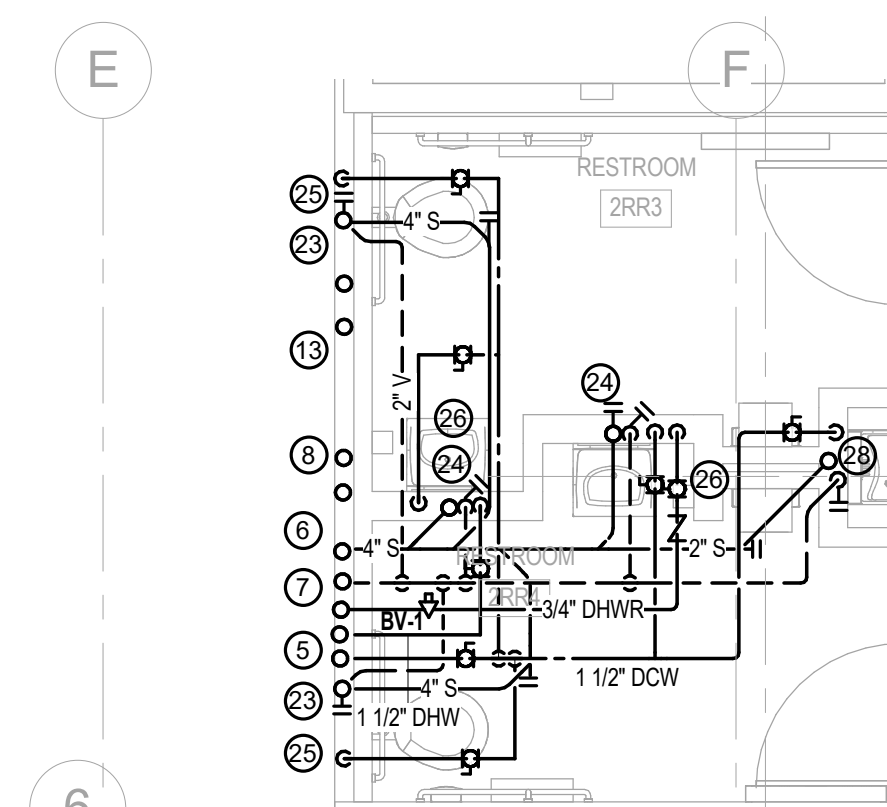


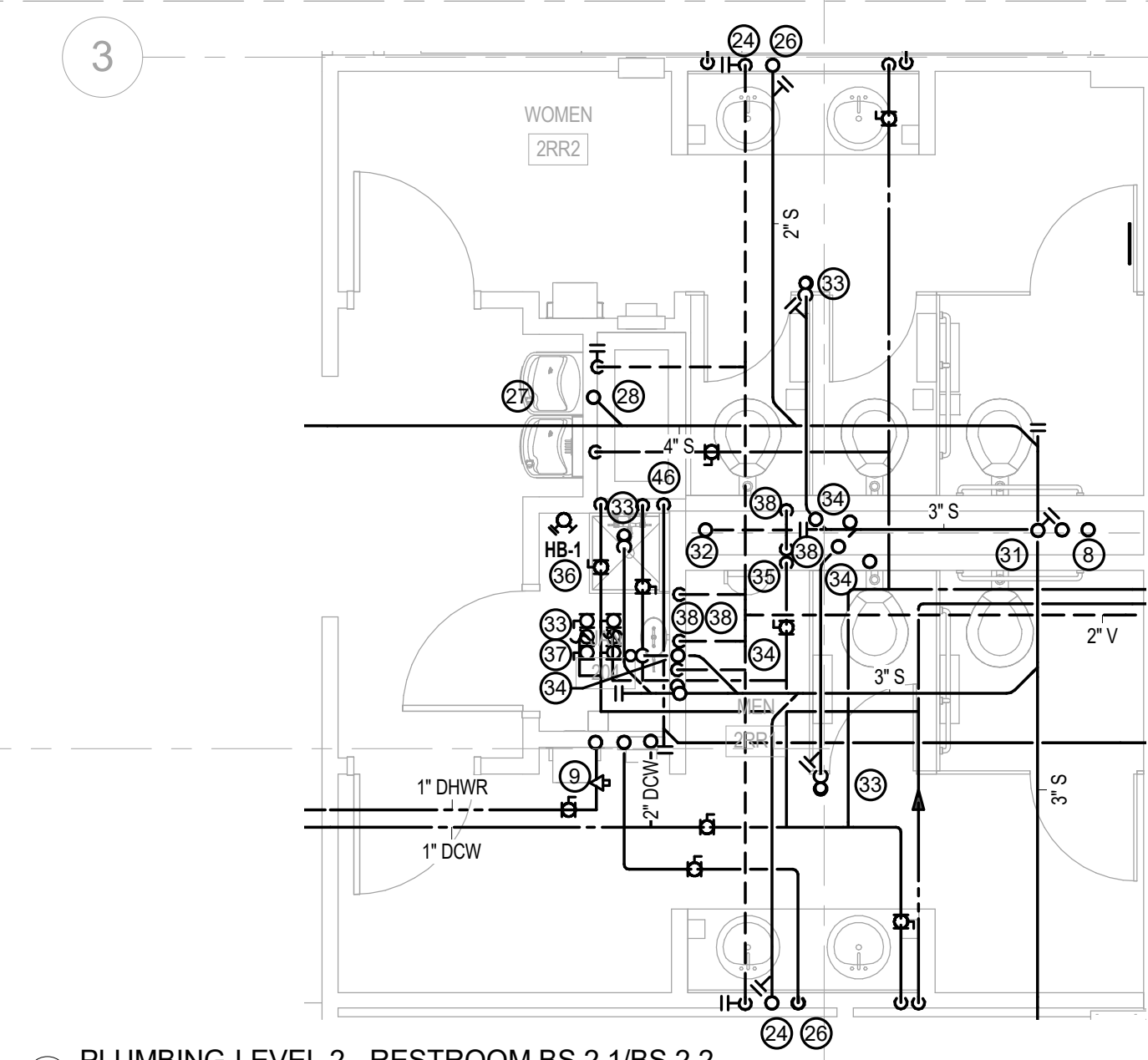
1 PLUMBING-LEVEL 1 - RESTROOM BS.1/BS.1.9
1/4" = 1'-0"



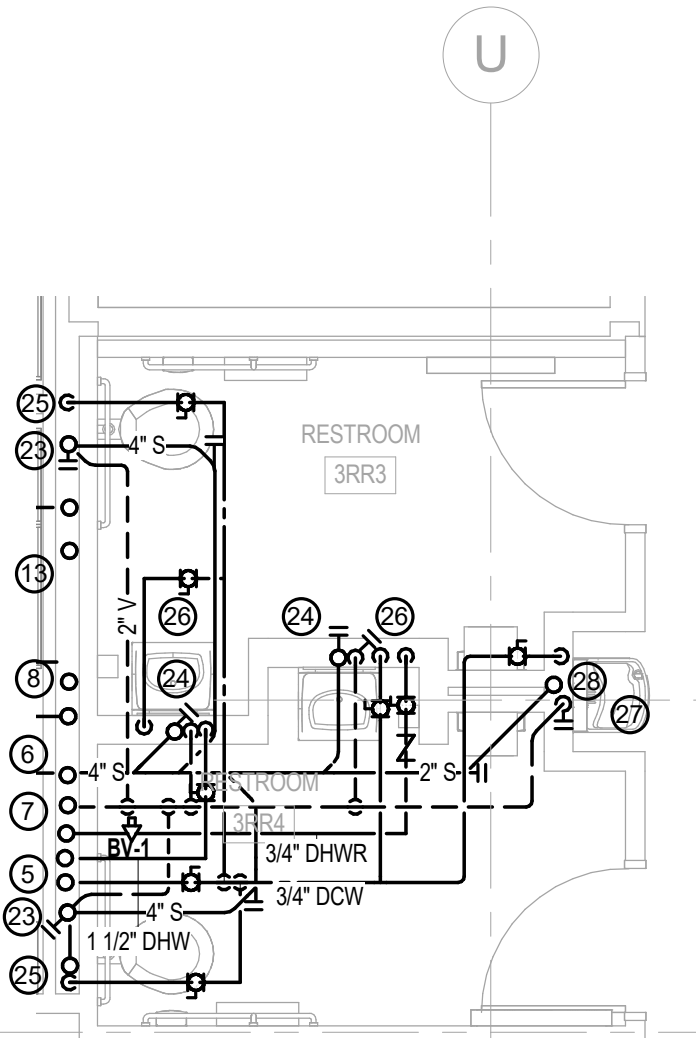
2 PLUMBING-LEVEL 1 - RESTROOM BS.1.1/BS.1.2
1/4" = 1'-0"



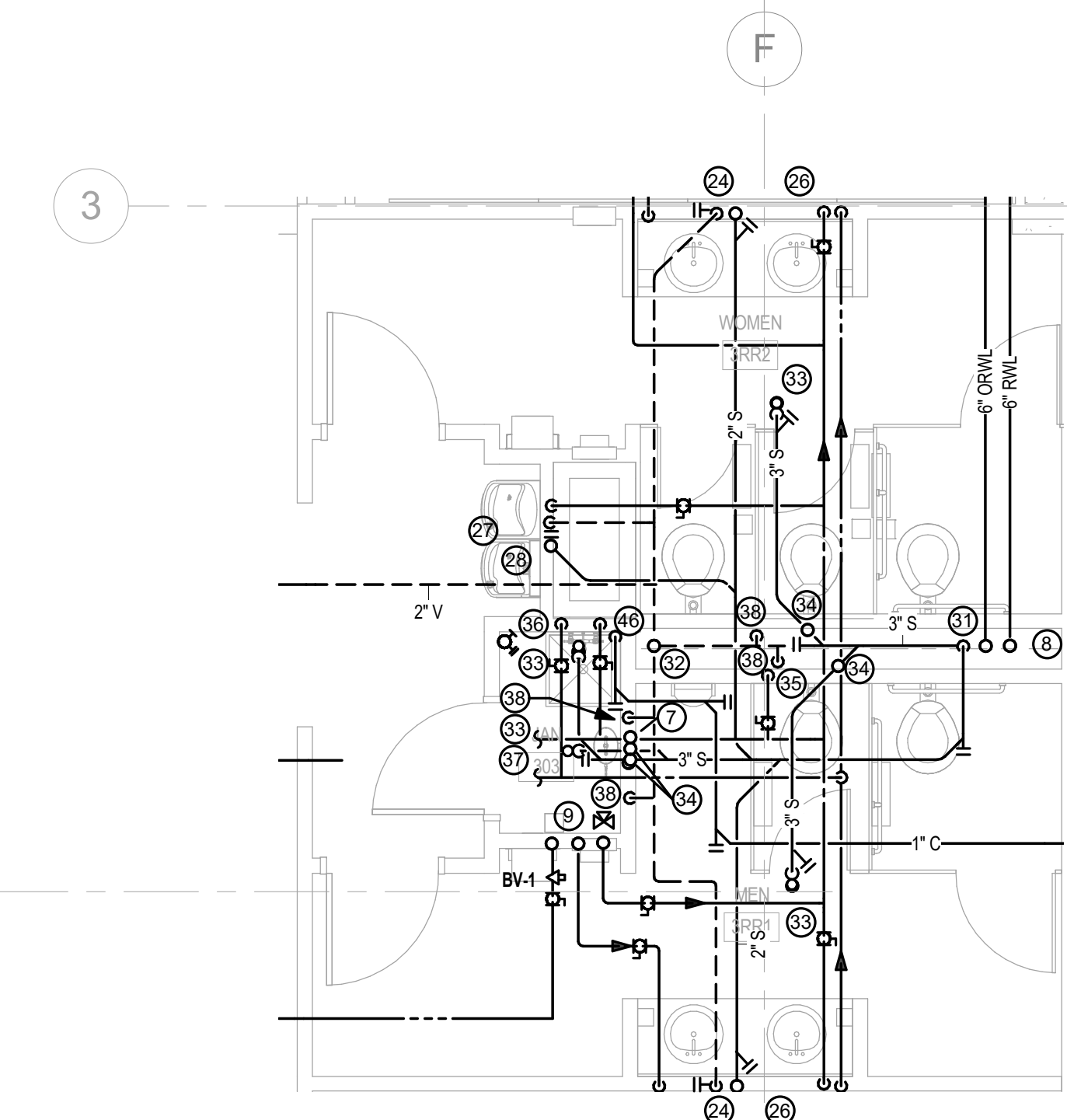
3 PLUMBING-LEVEL 2 - RESTROOM BS.2.8/BS.2.9
1/4" = 1'-0"



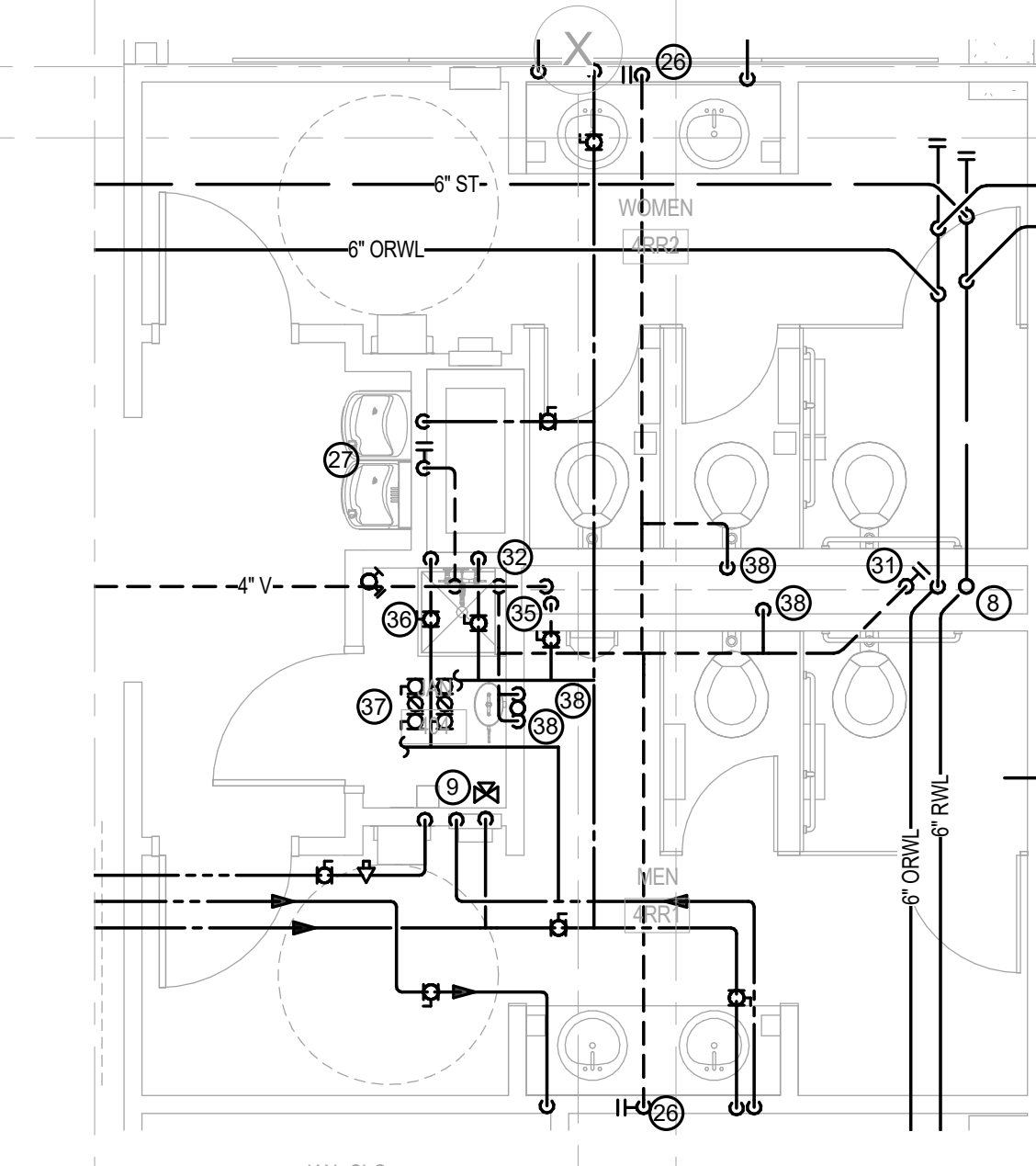
4 PLUMBING-LEVEL 2 - RESTROOM BS.2.1/BS.2.2
1/4" = 1'-0"



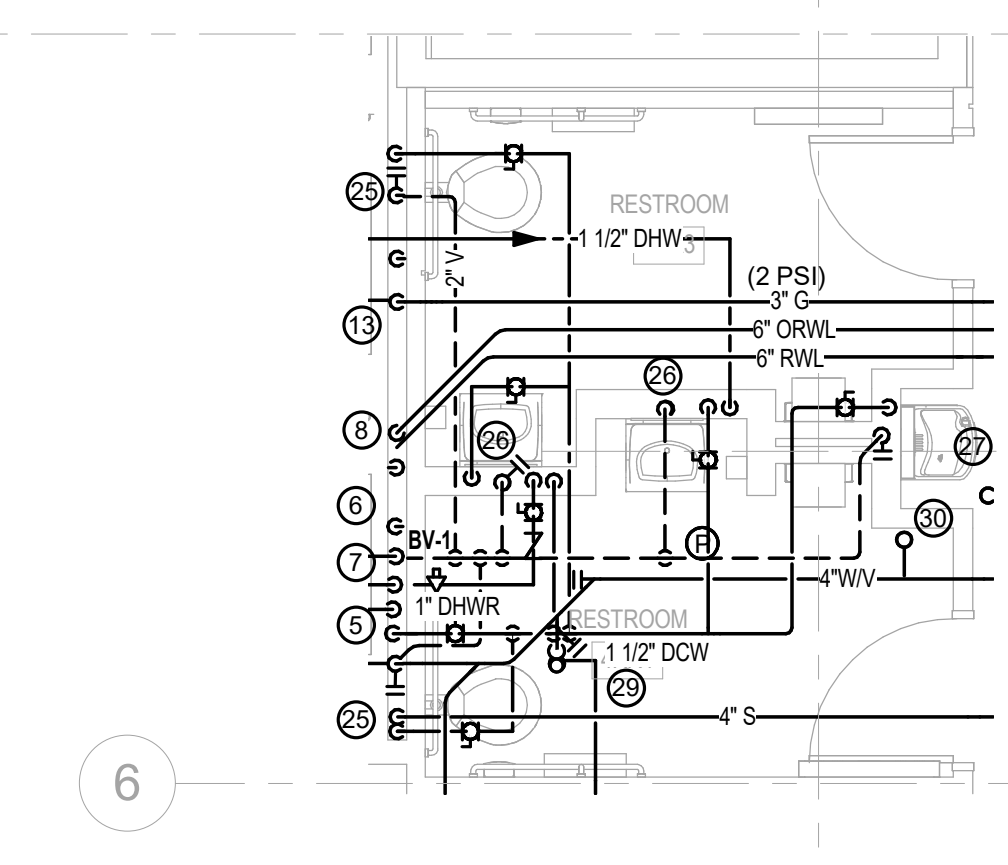
5 PLUMBING-LEVEL 3 - RESTROOM BS.3.8/BS.3.9
1/4" = 1'-0"



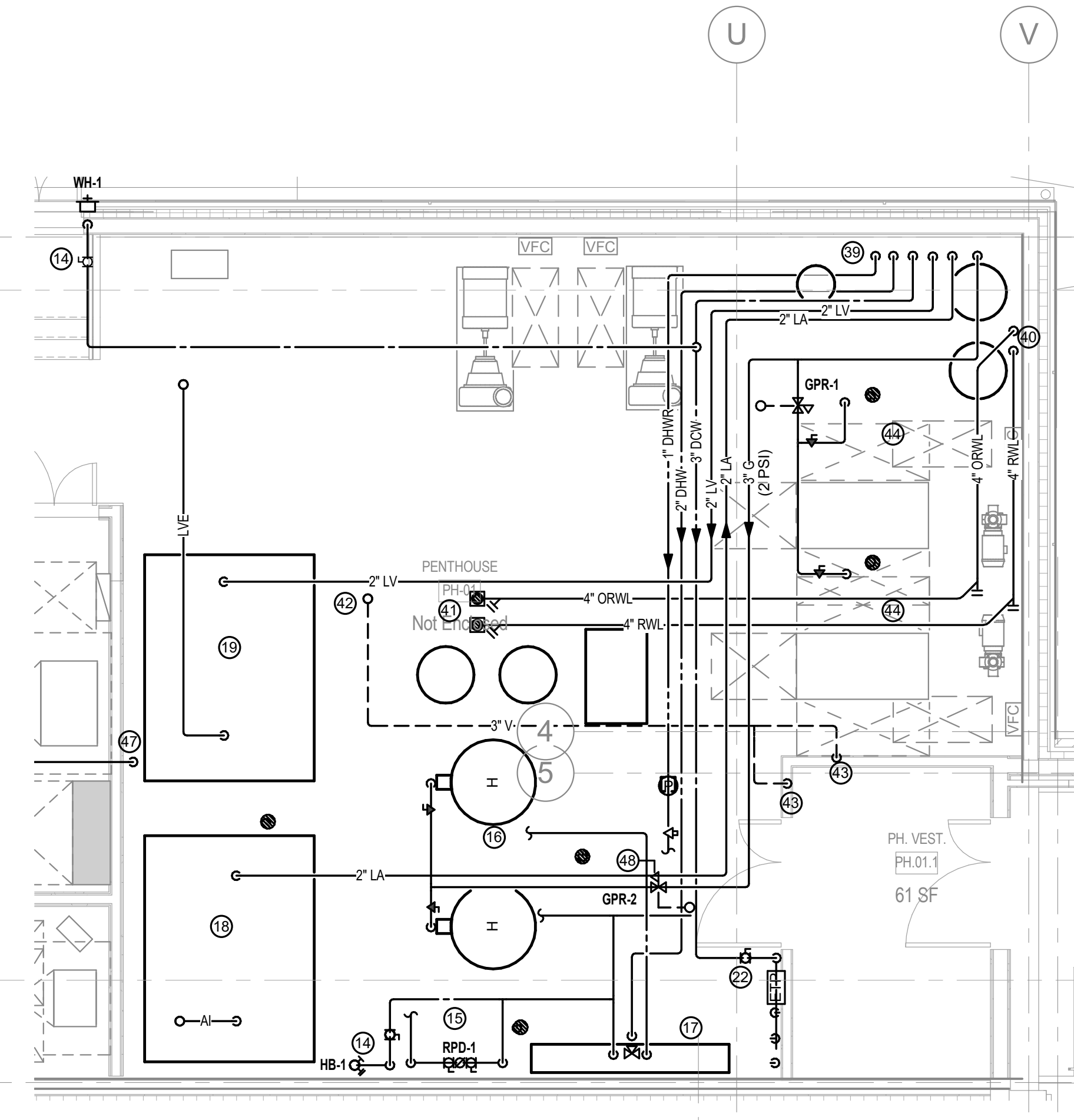
6 PLUMBING-LEVEL 3 - RESTROOM BS.3.1/BS.3.2
1/4" = 1'-0"



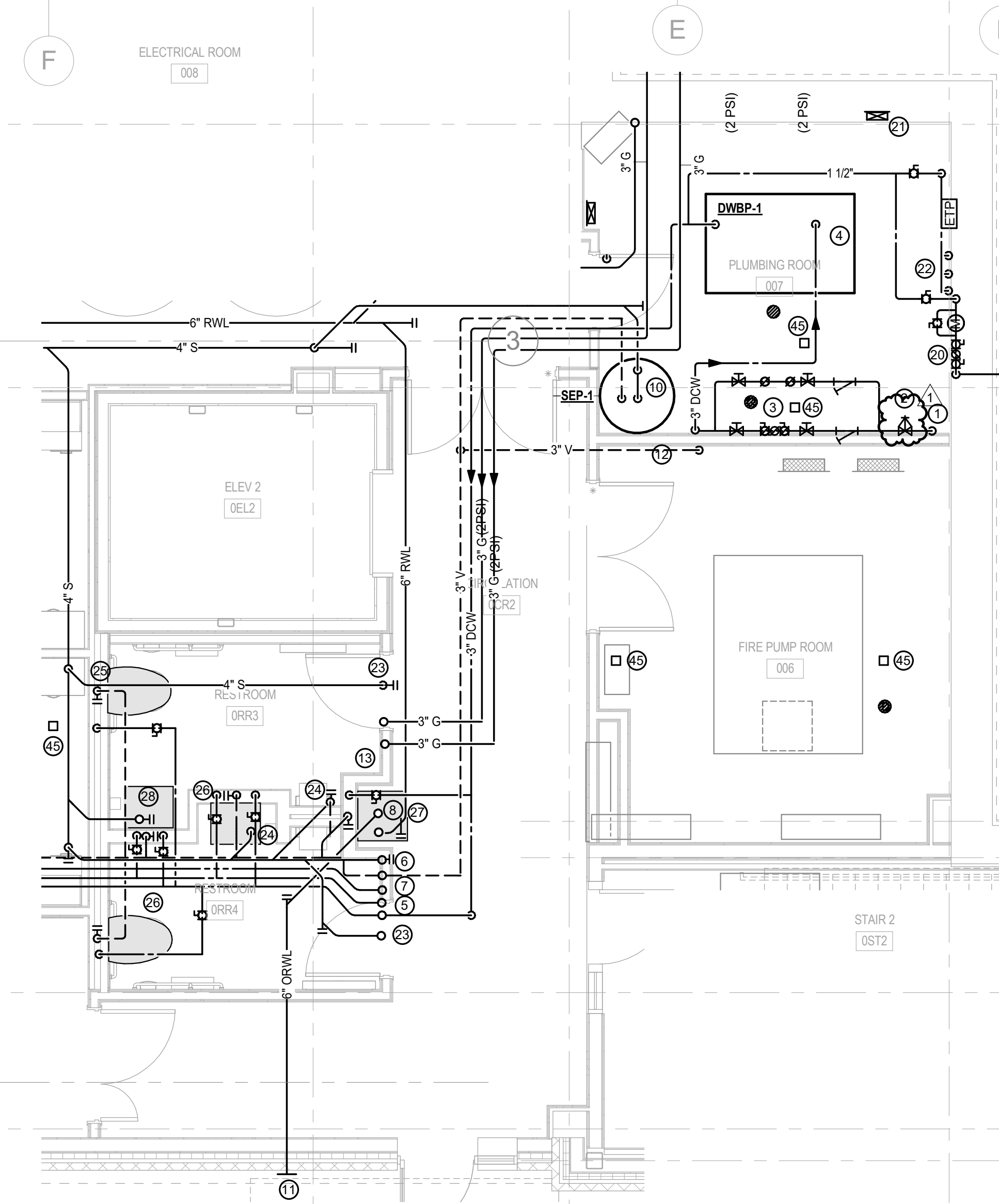
8 PLUMBING-LEVEL 4 - RESTROOM 4RR1/2 PART PLAN
1/4" = 1'-0"



9 PLUMBING-LEVEL 4 - RESTROOM 4RR3/4 PART PLAN
1/4" = 1'-0"



10 PLUMBING-ROOF - PENTHOUSE PART PLAN
1/4" = 1'-0"



7 PLUMBING-TERRACE LEVEL FIRE PUMP & PLUMBING ROOM PART PLAN
1/4" = 1'-0"

- PLUMBING DRAWING NOTES:**
- 4" WATER SERVICE DOWN.
 - WATER MAIN SHUTOFF VALVE.
 - DUPLEX 4" RPZ BACKFLOW PREVENTERS. EXTEND RELIEF DRAINS TO F.D. THROUGH AIR GAP.
 - DUPLEX VARIABLE SPEED DOMESTIC WATER BOOSTER PUMPS. PROVIDE 3" INLET & DISCHARGE CONNECTIONS.
 - 3" DCW, 1-1/2" DHW, 1" DHWR RISERS.
 - 4" S. STACK.
 - 4" V. STACK.
 - 6" RWL, 6" ORWL.
 - 2" DCW, 1-1/2" DHW, 1" DHWR RISERS.
 - SEWAGE EJECTOR PUMP SYSTEM & CONTROLLER. PROVIDE 4" INLET, 2" FM DISCHARGE, & 2" V. AT SEWAGE EJECTOR PUMP.
 - 6" ORWL TERMINATION. COORDINATE EXACT LOCATION AND ELEVATION WITH ARCHITECT.
 - 3" V. DN.
 - (2) 3" G (2 PSI) RISERS.
 - 1/2" CW DROP TO HOSE BIBB / WALL HYDRANT.
 - 1" CW MAKE-UP FOR HVAC EQUIPMENT. EXTEND PIPING TO HVAC EQUIPMENT.
 - GAS FIRED WATER HEATERS. SEE DETAIL FOR PIPING INFORMATION. PROVIDE 2" DCW, 2" DHW, 1" DHWR, 1-1/2" G CONNECTIONS.
 - MASTER THERMOSTATIC MIXING VALVE. SEE DETAIL FOR PIPING INFORMATION. PROVIDE 2" DCW, 2" DHW CONNECTION.
 - LAB AIR COMPRESSOR. PROVIDE 2" LA. CONNECTION. PROVIDE 2" LA UP THROUGH ROOF. SEE DETAIL FOR ADDITIONAL INFORMATION.
 - LAB VACUUM PUMP. PROVIDE 2" LV CONNECTION. PROVIDE 2" LV UP THROUGH ROOF. SEE DETAIL FOR ADDITIONAL INFORMATION.

- PLUMBING DRAWING NOTES:**
- 1-1/2" CW MAKE-UP FOR IRRIGATION SYSTEM. PIPE RPD RELIEF TO F.D. THROUGH AIR GAP. WATER METER SHALL BE PROVIDED BY THE WATER COMPANY AND INSTALLED BY THE CONTRACTOR.
 - LOCATION FOR IRRIGATION SYSTEM CONTROLLER.
 - ELECTRONIC TRAP PRIMER. PROVIDE 3/4" SUPPLY. EXTEND 1/2" DISTRIBUTION LINES TO F.D. TRAPS.
 - 4" S. UP.
 - 2" W. UP.
 - 4" S. DN, 2" V. UP, 1-1/2" CW DROP. EXTEND PIPING TO W.C.
 - 2" W. DN, 1-1/2" V. UP, 1/2" CW DROPS, 1-1/2" DHW LOOP DN. EXTEND PIPING TO LAV. EXTEND 1-1/2" DHW LOOP IN WALL AND PROVIDE 1/2" DHW TO LAV.
 - 1-1/2" W. DN, 1-1/2" V. UP, 1/2" CW DROP. EXTEND PIPING TO WATER COOLER.
 - 1-1/2" W. UP.
 - 3" W. UP TO F.D. INCREASE TO 4" W.V.
 - 2" V. UP.
 - 4" S. STACK. EXTEND 4" S. IN CHASE TO FIXTURES.
 - 4" S. STACK. EXTEND 4" S. IN CHASE TO FIXTURES.
 - 3" W. UP TO MOP SINK / F.D.
 - 1-1/2" V. UP.
 - 2" DCW DROP. EXTEND IN CHASE TO FIXTURES.
 - AT MOP SINK PROVIDE 3" W., 1-1/2" V., 1/2" H&CW.
 - 3/4" H&CW FOR JANITOR CLOSET. SEE DETAIL FOR PIPING CONTINUATION.
 - 1-1/2" V. DN.
 - 1" DHWR, 2" DHW, 3" DCW, 2" LV, 2" LA, 3" G (2 PSI) DN.
 - 4" RWL, 4" ORWL DN.
 - 4" RWL, 4" ORWL UP TO PENTHOUSE ROOF DRAINS.
 - 4" V. UP THROUGH ROOF.
 - 2" V. DN.
 - 1-1/2" G DROP TO BOILER.
 - FLOOR CLEANOUT SHOWN FOR REFERENCE. REFER TO UNDERGROUND PLAN FOR PIPING AND C.O. LOCATIONS.
 - 1" COND. DN. TO MOP SINK THROUGH AIR GAP.
 - 1" COND. DN. EXTEND TO F.D. THROUGH AIR GAP.
 - GAS PRESSURE REGULATOR - 2 PSI INLET, 14" W.C. OUTLET. PROVIDE 1" REGULATOR VENT UP THROUGH PENTHOUSE ROOF. TERMINATE WITH GOOSENECK AND INSECT SCREEN.

drawing title		REVISIONS		drawing prepared by		date	
PLUMBING PART PLANS <td>mark</td> <td>date</td> <td>description</td> <td colspan="2">BVH INTEGRATED SERVICES</td> <td>08/16/2019</td>		mark	date	description	BVH INTEGRATED SERVICES		08/16/2019
professional seal		1	08/16/19	ADDENDUM R2	206 WEST NEWBERRY ROAD		scale
					BLOOMFIELD, CT. 06002		1/4" = 1'-0"
					project	SCSU NEW HHS BUILDING	drawn by
						501 CRESCENT STREET	MT
						NEW HAVEN, CT 06050	approved by
							JSC
					project no.		drawing no.
					CAO no.	BI-RS-329	P200

STATE OF CONNECTICUT
DEPARTMENT OF ADMINISTRATIVE SERVICES